

**MONOCLONAL ANTIBODY**

# Anti-Carboxypeptidase D (Human) mAb

Code No.	Clone	Subclass	Quantity	Concentration
W008-3	2D11-9HA18	Mouse IgG2a $\kappa$	100 $\mu$ L	1 mg/mL

**BACKGROUND:** Carboxypeptidase D (CPD), also known as metallo-carboxypeptidase D, is a cell surface protein and functions in protein and peptide processing. CPD is highly expressed in placenta and pancreas, and also in hepatocellular carcinoma.

**SOURCE:** This antibody was purified from hybridoma culture supernatant by Protein A affinity column chromatography.

**FORMULATION:** 100  $\mu$ g IgG in 100  $\mu$ L volume of PBS containing 50% glycerol, pH 7.2. No preservative is contained.

**IMMUNOGEN:** Human Carboxypeptidase D expressed Ba/F3 transfectants generated from SST-REX (signal sequence trap by retrovirus-mediated expression screening).

**STORAGE:** This antibody solution is stable for one year from the date of purchase when stored at  $-20^{\circ}\text{C}$ .

**REACTIVITY:** This antibody reacts with human Carboxypeptidase D on Flow cytometry.

**APPLICATIONS:**

- Flow cytometry: 1-10  $\mu$ g/mL
- Western blotting: Not tested
- Immunoprecipitation: Not tested
- Immunohistochemistry: Not tested
- Immunocytochemistry: Not tested

Detailed procedure is provided in the following **PROTOCOL**.

**INTENDED USE:**

For Research Use Only. Not for use in diagnostic procedures.

**Entrez Gene ID:**

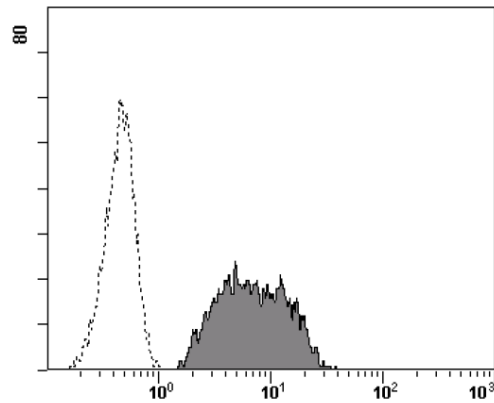
1362 (Human)

**SPECIES CROSS REACTIVITY:**

Species	Human	Mouse	Rat	Hamster
Cells	Transfectant	Not tested	Not tested	Not tested
Reactivity on FCM	+			

**REFERENCES:**

- 1) Campbell, N., *et al.*, *Clin. Immunol.* **102**, 267-274 (2002)
- 2) Campbell, N. A., *et al.*, *J. Biol. Chem.* **274**, 26259-26265 (1999)
- 3) Kojima, T and Kitamura, T. *Nat. Biotechnol.* **17**, 487-490 (1999)
- 4) Breiner, K., *et al.*, *J. Virol.* **72**, 8098-8104 (1998)
- 5) Ishikawa, T., *et al.*, *Gene* **215**, 361-370 (1998)



**Flow cytometric analysis of human Carboxypeptidase D expression on Ba/F3 transfectant.** Open histograms indicate the reaction of isotypic control to the cells. Shaded histograms indicate the reaction of W008-3 to the cells.

**PROTOCOL:**

**Flow cytometric analysis for floating cells**

We usually use Fisher tubes or equivalents as reaction tubes for all steps described below.

- 1) Wash the cells 3 times with washing buffer [PBS containing 2% fetal calf serum (FCS) and 0.05%  $\text{NaN}_3$ ].
- 2) Resuspend the cells with washing buffer ( $2.5 \times 10^6$  cells/mL).
- 3) Add 200  $\mu$ L of cell suspension into each tube. And centrifuge at 500 x g for 1 minute at room temperature ( $20\sim 25^{\circ}\text{C}$ ). Remove supernatant by careful decantation.
- 4) Add 20  $\mu$ L of Clear Back (human Fc receptor blocking reagent, MBL; code no. MTG-001) to the cell pellet after tapping. Mix well and incubate for 5 minutes at room temperature.
- 5) Add 50  $\mu$ L of the primary antibody at the concentration as suggest in the **APPLICATIONS** diluted in the washing buffer. Mix well and incubate for 30 minutes at room temperature.

- 6) Add 1 mL of the washing buffer followed by centrifugation at 500 x g for 1 minute at room temperature. Remove supernatant by careful decantation.
- 7) Add 50 µL of 1:200 anti-mouse IgG-PE (Beckman Coulter; code no. IM0855) diluted with the washing buffer. Mix well and incubate for 30 minutes at room temperature.
- 8) Add 1 mL of the washing buffer followed by centrifugation at 500 x g for 1 minute at room temperature. Remove supernatant by careful decantation.
- 9) Resuspend the cells with 500 µL of the washing buffer and analyze by a flow cytometer.

(Positive control for Flow cytometry; transfectant)

#### **RELATED PRODUCTS:**

- |         |   |
|---------|---|
| W005-3  | Anti-BTN2A1 (Human) mAb                         |
| W008-3  | Anti-Carboxypeptidase D (Human) mAb             |
| W011-3  | Anti-Dystroglycan (Human) mAb                   |
| W017-3  | Anti-EphA2 (Human) mAb                          |
| W029-3  | Anti-IGFBP1 (Human) mAb                         |
| W050-3  | Anti-RECK (Human) mAb                           |
| W086-3  | Anti-LYPD3 (C4.4A) (Human) mAb                  |
| W089-3  | Anti-C11orf24 (Human) mAb                       |
| W124-3  | Anti-GPR56 (Human) mAb                          |
| W125-3  | Anti-GPR56 (Human) mAb                          |
| W194-3  | Anti-FAM171A1 (Human) mAb                       |
| W253-3  | Anti-Glypican 1 (Human) mAb                     |
| W357-3  | Anti-CD105 (Endoglin) (Human) mAb               |
| W358-3  | Anti-CD300A (Human) mAb                         |
| W359-3  | Anti-CD300C (Human) mAb                         |
| M076-3  | Mouse IgG2a (isotype control)                   |
| MTG-001 | Clear Back (Human Fc receptor blocking reagent) |