

RiboCluster Profiler™

RIP-Certified Antibody

Anti-IGF2BP1 (IMP1) pAb

Code No.	Quantity	Concentration	Form
RN007P	200 µL	1 mg/mL	Affinity Purified

BACKGROUND: The localization of IGF2 mRNA-binding protein 1 (IMP1) is associated with motility and the major functions of IMP1 are carried out by the phylogenetically conserved KH domains. IMP1 can affect stability, localization, and translation of its target RNAs. Binding of IMP1 to the leader 3 mRNA in the 5'-UTR of IGF2 inhibits translation from a leader 3 reporter mRNA. Aberrant IMP1 expression may interfere with c-myc regulation. Compared with copy number gains at 17q21 (IMP1 locus), gains at 8q24 (c-myc locus) were observed more frequently in tumors. Furthermore, IMP1 expression was frequently detected in tumors, implying mechanism of activation other than gene amplification.

RIP-CERTIFIED ANTIBODY:

Posttranscriptional regulation of gene expression is a ribonucleoprotein-driven process, which involves RNA binding proteins (RBPs) and non-coding RNAs that affect splicing, nuclear export, subcellular localization, mRNA decay and translation. The RNP Immunoprecipitation-Chip (RIP-Chip), RIP-Seq and RIP-RTPCR allow the identification of multiple RNA targets of RBPs globally and within the context of a cell extract. Antibodies specific to the RNA binding protein of interest are used to co-immunoprecipitate the RNA binding protein and the associated subset of mRNAs. The mRNA content is interrogated using standard microarray or sequencing technology. RIP-Certified Antibody is validated for use in RNP Immunoprecipitation (RIP) in conjunction with the RIP-Assay Kit distributed from MBL. Its ability to immunoprecipitate mRNAs and RBPs complex was confirmed by quantitative and qualitative analysis on NanoDrop, Bioanalyzer and RT-PCR or microarray.

SOURCE: This antibody was purified from rabbit serum by affinity column chromatography. The rabbit was immunized with KLH conjugated synthetic peptide, KQQHQKQGSNQAQARRK corresponding to 561-577 aa.

FORMULATION: 200 µL volume of PBS containing 50% glycerol, pH 7.2. No preservative is contained.

STORAGE: This antibody solution is stable for one year from the date of purchase when stored at -20°C.

INTENDED USE:

For Research Use Only. Not for use in diagnostic procedures.

REACTIVITY: This antibody reacts with human IGF2BP1 (~63 kDa) on Western blotting, Immunoprecipitation and RNP Immunoprecipitation.

SPECIES CROSS REACTIVITY:

Species	Human	Mouse	Rat	Hamster
Cells	K562, 293T, HeLa, Jurkat	NIH/3T3	Rat1	CHO
Reactivity on WB	+	+	-	-

APPLICATIONS:

RNP Immunoprecipitation; 15 µg/500 µL of cell extract from 1.2 x 10⁷ cells

Western blotting; 1:1,000

Immunoprecipitation; 5 µg/250 µL of cell extract from 2.5 x 10⁶ cells

Immunohistochemistry; Not tested

Immunocytochemistry; Can be used

Flow cytometry; Not tested

Crosslinking-immunoprecipitation (CLIP); Not tested*

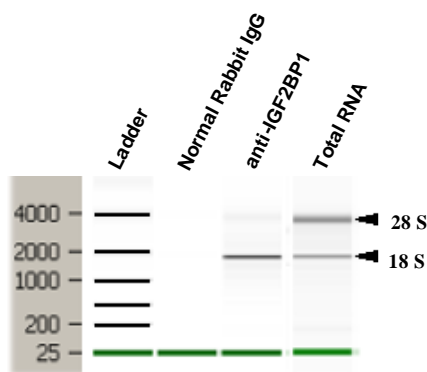
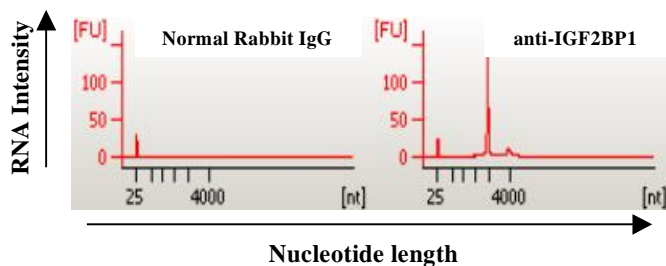
*It is reported that this antibody can be used in enhanced CLIP in the reference number 2), 6) and 7).

Detailed procedure is provided in the following **PROTOCOLS**.

REFERENCES:

- 1) Markmiller, S., *et al.*, *Cell* **172**, 590-604.e13 (2018) [IC]
- 2) Hosono, Y., *et al.*, *Cell* **171**, 1559-1572 (2017) [IP, RIP, CLIP]
- 3) de Vasconcellos, J. F., *et al.*, *PNAS*. **114**, E5664-E5672 (2017) [RIP]
- 4) JnBaptiste, C. K., *et al.*, *Genes Dev.* **31**, 674-687 (2017) [WB]
- 5) Donlin-Asp, P. G., *et al.*, *Cell Rep.* **18**, 1660-1673 (2017) [WB, IC, RIP]
- 6) Conway, A. E., *et al.*, *Cell Rep.* **15**, 666-679 (2016) [WB, IP, CLIP]
- 7) Van Nostrand, E. L., *et al.*, *Nat. Methods.* **13**, 508-514 (2016) [CLIP]
- 8) Stoskus, M., *et al.*, *Blood Cells Mol. Dis.* **57**, 30-34 (2016) [IP]
- 9) King, D. T., *et al.*, *PLoS One* **9**, e91585 (2014) [WB, RIP]
- 10) Patel, V. L., *et al.*, *Genes Dev.* **26**, 43-53 (2012) [RIP]
- 11) Liao, B., *et al.*, *J. Biol. Chem.* **280**, 18517-18524 (2005)
- 12) Ioannidis, P., *et al.*, *Int. J. Cancer* **104**, 54-59 (2003)
- 13) Nielsen, J., *et al.*, *Mol. Cell. Biol.* **19**, 1262-1270 (1999)

The descriptions of the following protocols are examples. Each user should determine the appropriate condition.



Analysis of isolated RNA with Bioanalyzer.

Average of the RNA Quantity (n=2)	
Antibody	RNA (ng)
Normal Rabbit IgG	89.0
anti-IGF2BP1	1704.0
Total RNA	220966.7

PROTOCOLS:

RNP Immunoprecipitation

Some buffer and reagents are included in the RIP-Assay Kit (code: RN1001). Please also refer to the protocol packaged in the RIP-Assay Kit.

[Material Preparation]

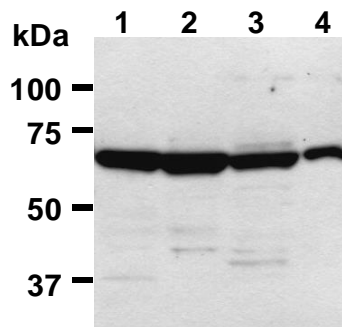
1. Lysis Buffer (+)
Before using the Lysis Buffer, protease inhibitors, RNase inhibitors, and DTT are added to the Lysis Buffer at the appropriate concentration.
2. Wash Buffer (+)
Before using the Wash Buffer, DTT is added to the Wash Buffer at the appropriate concentration.

Protocol

- 1) Wash 1.2×10^7 cells 2 times with PBS and resuspend them with 500 μ L of ice-cold Lysis Buffer (+) containing appropriate protease inhibitors, RNase inhibitors, and DTT. Vortex for 10 seconds. Leave on ice for 10 minutes.
- 2) Centrifuge the tube at 12,000 x g for 5 minutes at 4°C and transfer the supernatant to another tube.
- 3) Add 25 μ L of 50% protein A agarose beads slurry resuspended in Lysis Buffer (+) into the supernatant. Incubate it at 4°C with rotating for 1 hour.
- 4) Centrifuge the tube at 2,000 x g for 1 minute at 4°C and transfer the supernatant to another tube (precleared sample).

- 5) Mix both 25 μ L of 50% protein A agarose beads slurry resuspended in nuclease-free PBS and Normal Rabbit IgG (RIP-Assay Kit) or Anti-IGF2BP1 (IMP1) pAb (RN007P) at the amount of suggested in the **APPLICATIONS**, and then add 1 mL of Wash buffer (+) into each tube. Incubate with gentle agitation for 1 hour at 4°C.
- 6) Wash the beads once with ice-cold Lysis Buffer (+) (centrifuge the tube at 2,000 x g for 1 minute). Carefully discard the supernatant using a pipettor without disturbing the beads.
- 7) Add 500 μ L of cell lysate (precleared sample of step 4), then incubate with gentle agitation for 3 hours at 4°C.
- 8) Wash the beads 4 times with Wash Buffer (+) (centrifuge the tube at 2,000 x g for 1 minute).
- 9) Add 400 μ L of Master mix solution (Solution I: Solution II = 10 μ L: 390 μ L). Vortex for 10 seconds.
- 10) Add 250 μ L of Solution III. Vortex for 10 seconds.
- 11) Centrifuge the tube at 2,000 x g for 2 minutes.
- 12) Transfer the supernatant to the tube containing 2 μ L of Solution IV.
- 13) Add 600 μ L of ice-cold 2-propanol and place at -20°C for 20 minutes. Centrifuge the tube at 12,000 x g for 10 minutes.
- 14) Wash the pellet 2 times with 0.5 mL of ice-cold 70% Ethanol and dry up the pellet for 5-15 minutes.
- 15) Dissolve the pellets in nuclease-free water.
- 16) RNA was quantified with NanoDrop (Thermo Fisher Scientific Inc.) and the RNA quality was analyzed with Bioanalyzer (Agilent Technologies, Inc.).

(Positive control for RNP Immunoprecipitation; K562)



Western blot analysis of IGF2BP1 expression in K562 (1), 293T (2), HeLa (3), and Jurkat (4) using RN007P.

SDS-PAGE & Western Blotting

- 1) Wash 1×10^7 cells 3 times with PBS and suspend them in 1 mL of Laemmli's sample buffer.
- 2) Boil the samples for 2 minutes and centrifuge. Load 10 μ L of the sample per lane in a 1 mm thick SDS-polyacrylamide gel for electrophoresis.
- 3) Blot the protein to a polyvinylidene difluoride (PVDF) membrane at 1 mA/cm² for 1 hour in a semi-dry transfer system (Transfer Buffer: 25 mM Tris, 190 mM glycine, 20% MeOH). See the manufacturer's manual for precise transfer procedure.

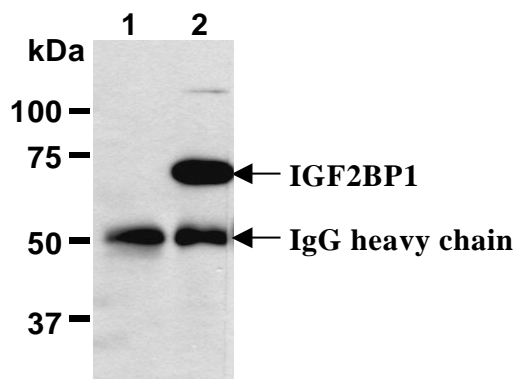
- 4) To reduce nonspecific binding, soak the membrane in 10% skimmed milk (in PBS, pH 7.2) for 1 hour at room temperature, or overnight at 4°C.
 - 5) Incubate the membrane with primary antibody diluted with 1% skimmed milk (in PBS, pH 7.2) as suggested in the **APPLICATIONS** for 1 hour at room temperature. (The concentration of antibody will depend on condition.)
 - 6) Wash the membrane with PBS-T [0.05% Tween-20 in PBS] (5 minutes x 3 times).
 - 7) Incubate the membrane with 1:10,000 of Anti-IgG (Rabbit) pAb-HRP (MBL; code no. 458) diluted with 1% skimmed milk (in PBS, pH 7.2) for 1 hour at room temperature.
 - 8) Wash the membrane with PBS-T (5 minutes x 3 times).
 - 9) Wipe excess buffer on the membrane, then incubate it with appropriate chemiluminescence reagent for 1 minute. Remove extra reagent from the membrane by dabbing with paper towel, and seal it in plastic wrap.
 - 10) Expose to an X-ray film in a dark room for 1 minute. Develop the film as usual. The condition for exposure and development may vary.
- (Positive controls for Western blotting; K562, 293T, HeLa, Jurkat and NIH/3T3)

- 5) Mix both 20 μ L of 50% protein A agarose beads slurry resuspended in nuclease-free PBS and Normal Rabbit IgG (RIP-Assay Kit) or Anti-IGF2BP1 (IMP1) pAb (RN007P) at the amount of suggested in the **APPLICATIONS**, and then add 1 mL of Wash buffer into each tube. Incubate with gentle agitation for 1 hour at 4°C.
- 6) Wash the beads once with ice-cold Lysis Buffer (centrifuge the tube at 2,000 x g for 1 minute). Carefully discard the supernatant using a pipettor without disturbing the beads.
- 7) Add 250 μ L of cell lysate (precleared sample of step 4), then incubate with gentle agitation for 1 hour at 4°C.
- 8) Wash the beads 4 times with Wash Buffer (centrifuge the tube at 2,000 x g for 1 minute).
- 9) Resuspend the beads in 20 μ L of Laemmli's sample buffer, boil for 3-5 minutes, and centrifuge for 5 minutes. Use 20 μ L/lane for the SDS-PAGE analysis. (See **SDS-PAGE & Western blotting.**)

(Positive control for Immunoprecipitation; K562)

RELATED PRODUCTS:

Please visit our web site <https://ruo.mbl.co.jp/>



Immunoprecipitation of IGF2BP1 from K562 with normal rabbit IgG (1) or RN007P (2). After immunoprecipitated with the antibody, immunocomplex was resolved on SDS-PAGE and immunoblotted with RN007P.

Immunoprecipitation

- 1) Wash 1×10^7 cells 2 times with PBS and resuspend them with 1 mL of ice-cold Lysis buffer (RIP-Assay Kit) containing appropriate protease inhibitors, then sonicate briefly (up to 10 seconds).
- 2) Centrifuge the tube at 12,000 x g for 5 minutes at 4°C and transfer the supernatant to another tube.
- 3) Add 20 μ L of 50% protein A agarose beads slurry resuspended in Lysis Buffer into the supernatant. Incubate it at 4°C with rotating for 1 hour.
- 4) Centrifuge the tube at 2,000 x g for 1 minute at 4°C and transfer the supernatant to another tube (precleared sample).