

For Research Use Only.
Not for use in diagnostic procedures.



Anti-Chrono (Mouse) pAb

CODE No. PM087

CLONALITY Polyclonal
ISOTYPE Rabbit Ig, affinity purified
QUANTITY 100 µL

SOURCE Purified Ig from rabbit serum

FORMURATION PBS containing 50% Glycerol (pH 7.2). No preservative is contained.

STORAGE This antibody solution is stable for one year from the date of purchase when stored at -20°C.

APPLICATIONS-CONFIRMED

Western blotting 1:500-1:1,000 for chemiluminescence detection system
Immunoprecipitation Not recommended
Immunohistochemistry Not recommended

SPECIES CROSS REACTIVITY on WB

Species	Human	Mouse	Rat	Hamster
sample	Not tested	Liver nuclear extract, transfectant	Not tested	Not tested
Reactivity		+		

Entrez Gene ID 229599 (Mouse)

For more information, please visit our web site <http://ruo.mbl.co.jp/>



RELATED PRODUCTS

Antibodies

PM087 Anti-Chrono (Mouse) pAb
D333-3 Anti-CLOCK (Mouse) mAb (CLSP3)
D334-3 Anti-CLOCK (Mouse) mAb (CLNT1)
D335-3 Anti-BMAL1 (Mouse) mAb (B1BH2)
D349-3 Anti-CLOCK (Mouse) mAb (CLSP4)
PM079 Anti-DBP (Mouse) pAb
PM081 Anti-Cry1 (Mouse) pAb
PM082 Anti-Cry2 (Mouse) pAb
PM083 Anti-Per2 (Mouse) pAb
CY-P1016 Anti-SIRT1 pAb
RN032P Anti-CIRBP pAb
RN013MW Anti-Nono (P54NRB) mAb (C5)
RN014MW Anti-SFPQ (PSF) mAb (C23)
RN015MW Anti-PSPC1 (PSP1) mAb (1L4)
RN092PW Anti-NONO (P54NRB) pAb
RN106PW Anti-SFPQ (PSF) pAb
PM075 Anti-GNAT2 (Zebrafish) pAb

PM035 Normal Rabbit IgG

Kits

CY-1151 CycLex[®] SIRT1/Sir2 Deacetylase
Fluorometric Assay Kit
CY-1152 CycLex[®] SIRT2 Deacetylase
Fluorometric Assay Kit
CY-1173 CycLex[®] CaM-kinase II Assay Kit
CY-8102 CircuLex Mouse CIRP ELISA Kit
CY-8103 CircuLex Human CIRP ELISA Kit

Recombinant proteins (Human, Active)

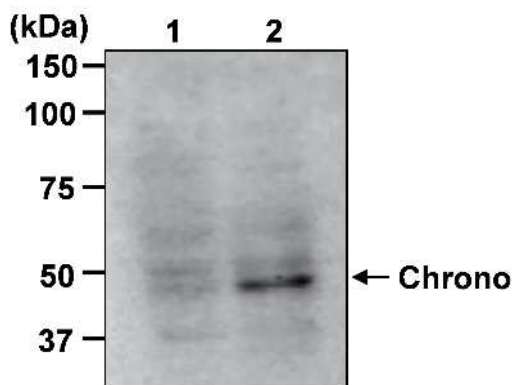
CY-E1151 NAD⁺-Dependent Deacetylase SIRT1
CY-E1152 NAD⁺-Dependent Deacetylase SIRT2
CY-E1173 CaM-kinase II Positive Control

Other related antibodies and kits are also available.
Please visit our website at <http://ruo.mbl.co.jp/>

SDS-PAGE & Western blotting

- 1) Boil the samples for 5 min. and centrifuge.
- 2) Load 20 μ L (20 μ g) of the sample per lane in a 1-mm-thick SDS-polyacrylamide gel (separation gel; upper 8% and lower 12%) for electrophoresis.
- 3) Blot the protein to a polyvinylidene difluoride (PVDF) membrane at 350 mA for 1 hr. in a wet transfer system.
- 4) To reduce nonspecific binding, soak the membrane in blocking buffer [TBS containing 3% skimmed milk and 0.05% Tween-20] for 1 hr. at room temperature.
- 5) Wash the membrane with TBS-T [0.05% Tween-20 in TBS] (5 min. x 3 times).
- 6) Incubate the membrane with primary antibody diluted with blocking buffer as suggested in the **APPLICATIONS** overnight at 4°C. (The concentration of antibody will depend on the conditions.)
- 7) Wash the membrane with TBS-T (5 min. x 3 times).
- 8) Incubate the membrane with 1:5,000 of Peroxidase AffiniPure Goat Anti-Rabbit IgG (H+L) (Jackson ImmunoResearch Laboratories; code no. 111-035-003) diluted with TBST for 1 hr. at room temperature.
- 9) Wash the membrane with TBS-T (10 min. x 4 times).
- 10) Wipe excess buffer on the membrane, and then incubate it with appropriate chemiluminescence reagent for 1 min. Remove extra reagent from the membrane by dabbing with paper towel, and seal it in plastic wrap.
- 11) Expose for 6 min. with LAS-3000 imaging system (Fujifilm). The condition for exposure may vary

(Positive control for Western blotting; Mouse liver nuclear extract (ZT12))



Western blot analysis of mouse Chrono from liver nuclear extract

Lane 1: Chrono KO, ZT12 (zeitgeber time; 12 h)
Lane 2: WT, ZT12 (zeitgeber time; 12 h)

Immunoblotted with Anti-Chrono (Mouse) pAb (PM087)

The data was kindly provided by Dr. Toru Takumi.
(RIKEN Brain Science Institute (BSI))