

Anti-TERT (Human) mAb

| | |
|--------------------|---|
| CODE No. | M216-3 |
| CLONALITY | Monoclonal |
| CLONE | 10E9-2 |
| ISOTYPE | Mouse IgG2b κ |
| QUANTITY | 100 μ L, 1 mg/mL |
| SOURCE | Purified IgG from hybridoma supernatant |
| FORMULATION | PBS containing 50% Glycerol (pH 7.2). No preservative is contained. |
| STORAGE | This antibody solution is stable for one year from the date of purchase when stored at -20°C. |

APPLICATION-CONFIRMED

Western blotting 0.5-10 μ g/mL

APPLICATION-UNDER EVALUATION

Chromatin Immunoprecipitation (ChIP) Can be used.

APPLICATIONS-REPORTED

Immunoprecipitation Reference 1)

Immunocytochemistry Reference 1)

SPECIES CROSS REACTIVITY on Western blotting

| Species | Human | Mouse | Rat | Hamster |
|------------|------------------------|------------|------------|------------|
| Sample | TERT/293T transfectant | Not tested | Not tested | Not tested |
| Reactivity | + | | | |

Entrez Gene ID 7015 (Human)

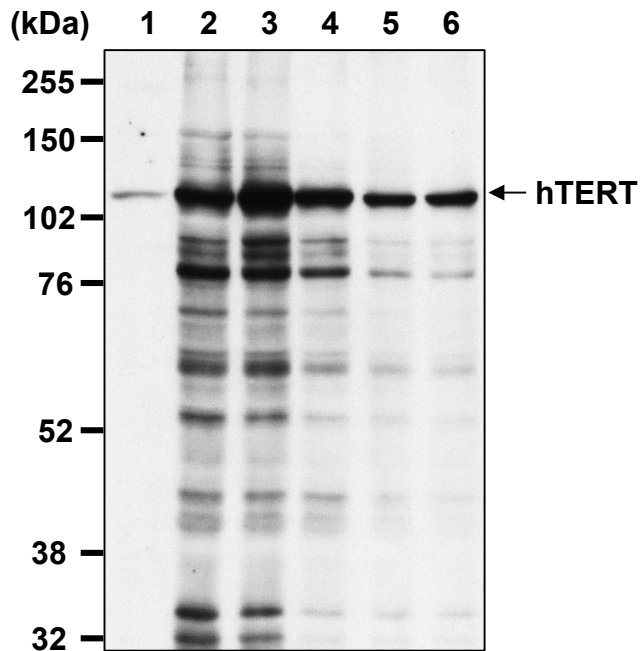
REFERENCES

- 1) Maida, Y., *et al.*, *Mol. Cell Biol.* **36**, 1248-1259 (2016) [IP]
- 2) Maida, Y., *et al.*, *Mol. Cell Biol.* **34**, 1576-1593 (2014) [WB, IP, IC, ChIP]

For more information, please visit our website at <https://ruo.mbl.co.jp/>.

The descriptions of the following protocols are examples. Each user should determine the appropriate condition.

SDS-PAGE & Western blotting



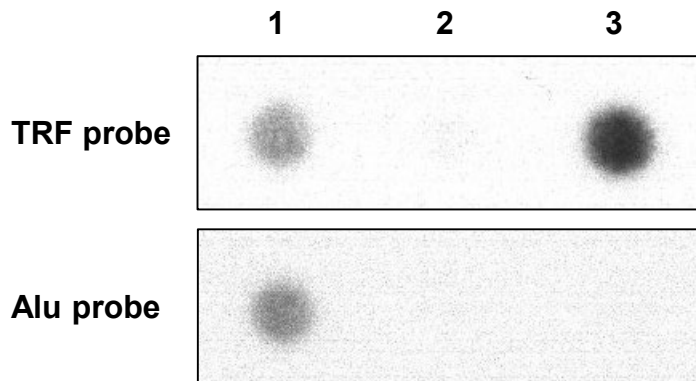
Western blotting analysis of human TERT

Cells: FLAG-tagged hTERT/293T (50 μ g/lane)
1st Ab: Anti-FLAG M2 Monoclonal Antibody (Sigma) (Lane 1)
Anti-TERT (Human) mAb (M216-3) (Lane 2-6)
2nd Ab: Anti-mouse IgG-HRP, 1:5,000
Expose time: 30 sec

Lane 1: Anti-FLAG M2 Monoclonal Antibody, 1:500
Lane 2: Anti-TERT (Human) mAb , 1:100
Lane 3: Anti-TERT (Human) mAb , 1:200
Lane 4: Anti-TERT (Human) mAb , 1:500
Lane 5: Anti-TERT (Human) mAb , 1:1,000
Lane 6: Anti-TERT (Human) mAb , 1:2,000

Data were kindly provided by Dr. Kenkichi Masutomi.
(Division of Cancer Stem Cell, National Cancer Center Research Institute)

Chromatin Immunoprecipitation (under evaluation)



Analysis of immunoprecipitated DNA with dot blotting using telomere restriction fragment (TRF) probe

1. Input
2. Isotype control
3. Anti-TERT (Human) mAb (M216-3)

Cells: HeLa (1×10^7 cells)

Antibody: Anti-TERT (Human) mAb (M216-3; clone 10E9-2), 20 μ g/sample

Probe: Alu 5'-CGGAGTCTCGCTCTGTCGCCAGGCTGGAGTGCAGTGGCGCGA-3'

TRF 5'-CCCTAACCTAACCTAA-3'

Data were kindly provided by Dr. Kenkichi Masutomi.
(Division of Cancer Stem Cell, National Cancer Center Research Institute)