

MONOCLONAL ANTIBODY

## Alexa Fluor® 647 labeled Rat IgG2a isotype control

Code No.	Clone	Subclass	Quantity	Concentration
M081-A64	2H3	Rat IgG2a	100 µL	1 mg/mL

**SOURCE:** This antibody was purified from hybridoma (clone 2H3) supernatant using protein G agarose. This hybridoma was established by fusion of mouse myeloma cell P3U1 with rat lymph nodes immunized with KLH.

**FORMULATION:** 100 µg IgG in 100 µL volume of PBS containing 1% BSA and 0.09% NaN<sub>3</sub>.

\*Azide may react with copper or lead in plumbing system to form explosive metal azides. Therefore, always flush plenty of water when disposing materials containing azide into drain.

**STORAGE:** This antibody solution is stable for one year from the date of purchase when stored at 4°C.

**REACTIVITY:** No specific binding is detected on mouse splenocytes.

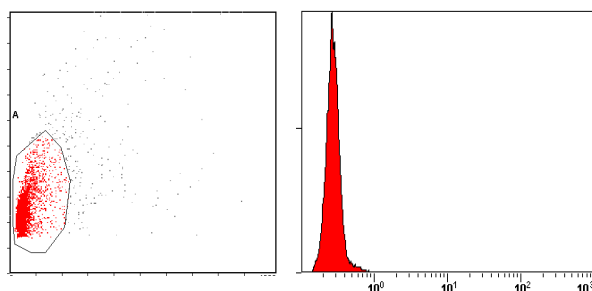
### APPLICATION:

Flow cytometry: This antibody can be used as a negative isotypic control. The concentration will depend on the conditions.

Detailed procedure is provided in the following **PROTOCOL**.

### INTENDED USE:

For Research Use Only. Not for use in diagnostic procedures.



**Flow cytometric analysis of rat IgG2a reactivity of mouse splenocytes.**

### PROTOCOL:

#### Flow cytometric analysis for floating cells

We usually use Fisher tubes or equivalents as reaction tubes for all steps described below.

- 1) Wash the cells 3 times with washing buffer [PBS containing 2% fetal calf serum (FCS) and 0.1% NaN<sub>3</sub>].
- 2) Resuspend the cells with washing buffer (6x10<sup>6</sup> cells/mL).

- 3) Add 50 µL of the cell suspension into each tube, and centrifuge at 500 x g for 1 minute at room temperature
- 4) (20~25°C). Remove supernatant by careful aspiration.
- 5) Add 10 µL of normal goat serum to the cell pellet after tapping. Mix well and incubate for 10 minutes at room temperature.
- 6) Add the isotype control antibody at the concentrations comparable to those of the specific antibody of interest. Mix well and incubate for 30 minutes at room temperature.
- 7) Add 1 mL of the washing buffer followed by centrifugation at 500 x g for 1 minute at room temperature. Remove supernatant by careful aspiration.
- 8) Resuspend the cells with 500 µL of the washing buffer and analyze by a flow cytometer.

### RELATED PRODUCTS:

M075-3	Mouse IgG1 isotype control (2E12)
M075-4	Mouse IgG1 isotype control-FITC (2E12)
M075-5	Mouse IgG1 isotype control-PE (2E12)
M075-8	Mouse IgG1 isotype control-Agarose (2E12)
M075-A48	Mouse IgG1 isotype control-Alexa Fluor® 488 (2E12)
M075-A64	Mouse IgG1 isotype control-Alexa Fluor® 647 (2E12)
M076-3	Mouse IgG2a isotype control (6H3)
M076-4	Mouse IgG2a isotype control-FITC (6H3)
M076-5	Mouse IgG2a isotype control-PE (6H3)
M076-A48	Mouse IgG2a isotype control-Alexa Fluor® 488 (6H3)
M076-A64	Mouse IgG2a isotype control-Alexa Fluor® 647 (6H3)
M077-3	Mouse IgG2b isotype control (3D12)
M077-4	Mouse IgG2b isotype control-FITC (3D12)
M077-5	Mouse IgG2b isotype control-PE (3D12)
M077-A48	Mouse IgG2b isotype control-Alexa Fluor® 488 (3D12)
M077-A64	Mouse IgG2b isotype control-Alexa Fluor® 647 (3D12)
M078-3	Mouse IgG3 isotype control (6A3)
M078-4	Mouse IgG3 isotype control-FITC (6A3)
M079-3	Mouse IgM isotype control (7E10)
M080-3	Rat IgG1 isotype control (1H5)
M080-4	Rat IgG1 isotype control-FITC (1H5)
M080-5	Rat IgG1 isotype control-PE (1H5)
M080-A48	Rat IgG1 isotype control-Alexa Fluor® 488 (1H5)
M080-A64	Rat IgG1 isotype control-Alexa Fluor® 647 (1H5)
M081-3	Rat IgG2a isotype control (2H3)
M081-4	Rat IgG2a isotype control-FITC (2H3)
M081-5	Rat IgG2a isotype control-PE (2H3)
M081-8	Rat IgG2a isotype control-Agarose (2H3)
M081-A48	Rat IgG2a isotype control-Alexa Fluor® 488 (2H3)
M081-A64	Rat IgG2a isotype control-Alexa Fluor® 647 (2H3)
M090-3	Rat IgG2b isotype control (3G8)
M090-4	Rat IgG2b isotype control-FITC (3G8)

M090-5 Rat IgG2b isotype control-PE (3G8)  
M090-A48 Rat IgG2b isotype control-Alexa Fluor<sup>®</sup> 488 (3G8)  
M090-A64 Rat IgG2b isotype control-Alexa Fluor<sup>®</sup> 647 (3G8)  
M082-3 Rat IgG2c isotype control (6E12)  
M082-4 Rat IgG2c isotype control-FITC (6E12)  
PM035-8 Normal Rabbit IgG-Agarose (polyclonal)

101224-1

***LABEL LICENSES:***

*This product is provided under an agreement between LIFE TECHNOLOGIES Corporation, and Medical & Biological Laboratories Co., LTD, and the manufacture, use, sale or import of this product may be subject to one or more U.S. patents, pending applications, and corresponding non-U.S. equivalents, owned by or licensed to LIFE TECHNOLOGIES Corporation. For information on purchasing a license to this product for any other use, contact LIFE TECHNOLOGIES Corporation, Molecular Probes Detection Technologies, Business Development, 29851 Willow Creek Road, Eugene, OR 97402, USA, Tel: (541) 465-8300. Fax: (541) 335-0504.*

*Alexa Fluor<sup>®</sup> is a registered trademark of Molecular Probes, Inc.*