

For Research Use Only.
Not for use in diagnostic procedures.

Anti-GP2 (Glycoprotein 2) (Human) mAb -Alexa Fluor[®] 488

CODE No. D277-A48

CLONALITY Monoclonal
CLONE 3G7-H9
ISOTYPE Mouse IgG1 κ
QUANTITY 100 μ L, 1 mg/mL

SOURCE Purified IgG from hybridoma supernatant
IMMUNOGEN Human GP2-Human Fc fusion protein without transmembrane region
FORMULATION PBS containing 1% BSA and 0.1% ProClin 150
STORAGE This antibody solution is stable for one year from the date of purchase when stored at 4°C.

APPLICATIONS-CONFIRMED

Flow cytometry 1 μ g/mL

SPECIES CROSS REACTIVITY

| Species | Human | Mouse | Rat | Hamster |
|------------|-----------------|-----------------|------------|------------|
| Tissues | Peyer's patches | Peyer's patches | Not tested | Not Tested |
| Reactivity | + | - | | |

Entrez Gene ID 2813 (Human)

REFERENCES 1) Hase, K., *et al.*, *Nature* **462**, 226-230 (2009)
This clone is used in this reference.

For more information, please visit our web site <https://ruo.mbl.co.jp/>.

LABEL LICENSES:

This product is provided under an agreement between LIFE TECHNOLOGIES Corporation, and Medical & Biological Laboratories Co., LTD.

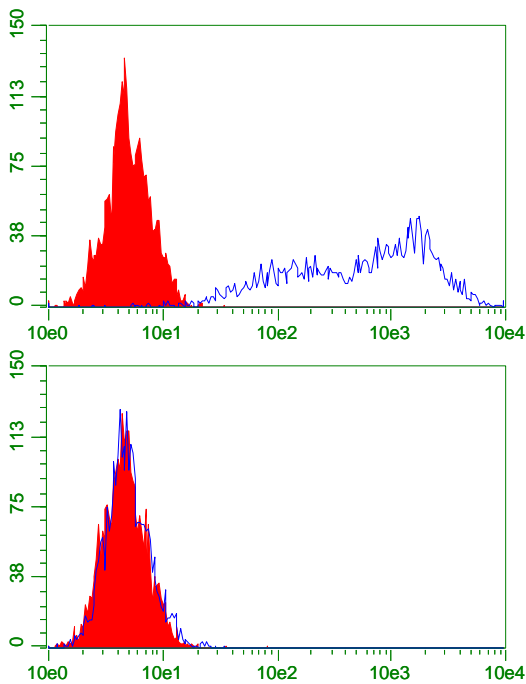
Alexa Fluor[®] is a registered trademark of Molecular Probes, Inc.

The descriptions of the following protocols are examples. Each user should determine the appropriate condition.

Flow cytometric analysis

- 1) Wash the cells (5×10^5 cells/sample) once with 1 mL of washing buffer [PBS containing 2% fetal calf serum (FCS)].
- 2) Add 20 μ L of Clear Back (human Fc receptor blocking reagent, MBL; code no. MTG-001) to the cell pellet after tapping. Mix well and incubate for 5 min. at room temperature.
- 3) Add 40 μ L of the primary antibody at the concentration as suggested in the **APPLICATION** diluted in the washing buffer. Mix well and incubate for 30 min. at room temperature. (Optimization of antibody concentration or incubation condition are recommended if necessary.)
- 4) Wash the cells twice with 1 mL of the washing buffer.
- 5) Resuspend the cells with 500 μ L of the washing buffer and analyze by a flow cytometer.

(Positive control for Flow cytometry; Transfectant)



Flow cytometric detection of GP2 (Human) in transfectant

Cell

Upper: Human GP2/293T

Lower: Parental cell (293T)

Antibody

Open: D277-A48

Closed: Isotype control (M075-A48)