

**For Research Use Only.**  
**Not for use in diagnostic procedures.**



# Anti-CD274 (PD-L1) (Human) mAb

## (Functional Grade)

**CODE No.** D092-3M2

**CLONALITY** Monoclonal  
**CLONE** MIH3  
**ISOTYPE** Mouse IgG1  $\kappa$   
**QUANTITY** 100  $\mu$ L, 1 mg/mL

**SOURCE** Purified IgG from hybridoma supernatant  
**IMMUNOGEN** L cells transfected with full-length human PD-L1 protein  
**FORMURATION** PBS. Azide free, 0.22  $\mu$ m sterile-filtered  
Endotoxin level is < 0.5 EU/mg antibody, as determined by the LAL assay.

**STORAGE** This antibody solution is stable for one year from the date of purchase when stored at -20°C.

### APPLICATION-CONFIRMED

Flow cytometry 5-10  $\mu$ g/mL

### APPLICATION-REPORTED

Functional activity Adhesion assay, Reference 2)

### SPECIES CROSS REACTIVITY on FCM

| Species    | Human       | Mouse      | Rat        | Hamster    |
|------------|-------------|------------|------------|------------|
| Cells      | Tansfectant | Not tested | Not tested | Not tested |
| Reactivity | +           |            |            |            |

**Entrez Gene ID** 29126 (Human)

### REFERENCES

- 1) Haile, S. T., *et al.*, *Cancer Immunol. Res.* **2**, 610 – 615 (2014)
- 2) Butte, M. J., *et al.*, *Mol. Immunol.* **45**, 3567-3572 (2008)
- 3) del Rio, M. L., *et al.*, *J. Immunol.* **178**, 6861-6866 (2007)

For more information, please visit our web site <http://ruo.mbl.co.jp/>



MEDICAL & BIOLOGICAL LABORATORIES CO., LTD.  
URL <http://ruo.mbl.co.jp/>  
e-mail [support@mbi.co.jp](mailto:support@mbi.co.jp), TEL 052-238-1904

## **RELATED PRODUCTS**

### Functional grade antibodies

D092-3M2 Anti-CD274 (PD-L1) (Human) mAb FG (MIH3)  
D133-3M2 Anti-CD279 (PD-1) (Human) mAb FG (J105)  
D292-3M2 Anti-Mincle (Mouse) mAb FG (4A9)  
D266-3M2 Anti-Mincle (Mouse) mAb FG (1B6)  
M187-3 Anti-IL-33 (Mouse) mAb FG (1F11)  
M188-3 Anti-IL-33 (Mouse) mAb FG (2C7)  
M075-3M2 Mouse IgG1 (isotype control) FG (2E12)  
M076-3M2 Mouse IgG2a (isotype control) FG (6H3)  
M079-3M2 Mouse IgM (isotype control) FG (7E10)  
M080-3M2 Rat IgG1 (isotype control) FG (1H5)

### Purified antibodies

D092-3 Anti-CD274 (PD-L1) (Human) mAb (MIH3)  
D092-6 Anti-CD274 (PD-L1) (Human) mAb-Biotin (MIH3)  
D230-3 Anti-CD274 (PD-L1) (Human) mAb (27A2)  
D230-5 Anti-CD274 (PD-L1) (Human) mAb-PE (27A2)  
D133-3 Anti-CD279 (PD-1) (Human) mAb (J105)  
D133-5 Anti-CD279 (PD-1) (Human) mAb-PE (J105)  
D132-3 Anti-CD279 (PD-1) (Human) mAb (J110)  
D132-4 Anti-CD279 (PD-1) (Human) mAb-FITC (J110)  
D132-5 Anti-CD279 (PD-1) (Human) mAb-PE (J110)

Other related antibodies and kits are also available.

Please visit our website at <http://ruo.mbl.co.jp/>

**Flow cytometric analysis for floating cells**

1) Wash the cells ( $3 \times 10^5$  cells/sample) 1 time with 1 mL of washing buffer [PBS containing 2% fetal calf serum (FCS) and 0.09%  $\text{NaN}_3$ ].

\*Azide may react with copper or lead in plumbing system to form explosive metal azides. Therefore, always flush plenty of water when disposing materials containing azide into drain.

2) Add 10  $\mu\text{L}$  of Clear Back (human Fc receptor blocking reagent, MBL; code no. MTG-001) to the cell pellet after tapping. Mix well and incubate for 15 min. at room temperature.

3) Add 40  $\mu\text{L}$  of the primary antibody at the concentration as suggested in the **APPLICATION** diluted with washing buffer.

4) Mix well and incubate for 15 min. at room temperature.

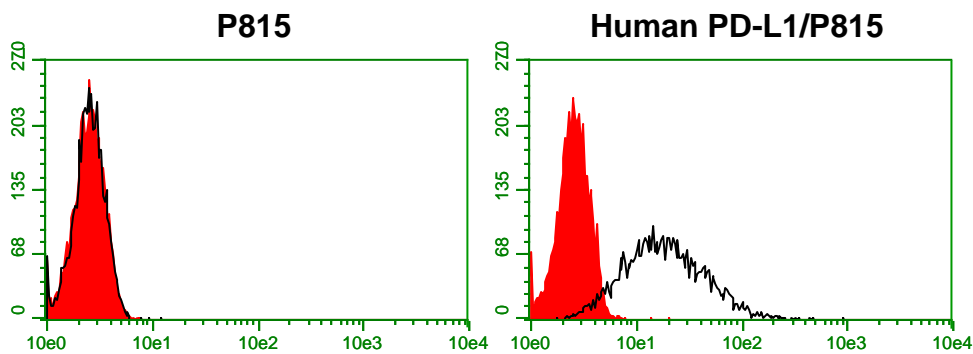
5) Wash the cells 1 time with 1 mL of washing buffer.

6) Add 40  $\mu\text{L}$  of FITC conjugated anti-mouse IgG antibody diluted with washing buffer. Mix well and incubate for 15 min. at room temperature.

7) Wash the cells 1 time with 1 mL of washing buffer.

8) Resuspend the cells with 500  $\mu\text{L}$  of the washing buffer and analyze by a flow cytometer.

(Positive control for Flow cytometry; Transfectant)

**Flow cytometric analysis of human CD274 (PD-L1) on transfectant**

Open: Anti-CD274 (PD-L1) (Human) mAb (D092-3M2)

Closed: Mouse IgG1 (isotype control) (M075-3)