

Anti-SynCAM (TSLC1/CADM1) mAb -Biotin

CODE No. CM004-6

CLONALITY Monoclonal
CLONE 3E1
ISOTYPE Chicken IgY
QUANTITY 100 µL, 1 mg/mL

SOURCE Purified IgY from hybridoma supernatant
IMMUNOGEN Recombinant SynCAM-Fc fusion protein
FORMULATION PBS containing 1% BSA and 0.1% ProClin 150
STORAGE This antibody solution is stable for one year from the date of purchase when stored at 4°C.

APPLICATION-CONFIRMED

Flow cytometry 1 µg/mL

APPLICATION-REPORTED

Immunoprecipitation Reference 2)

SPECIES CROSS REACTIVITY on FCM

| Species | Human | Mouse | Rat* | Hamster |
|------------|--------------|------------|------------|------------|
| Cell | Transfectant | Not tested | Not tested | Not tested |
| Reactivity | + | | | |

*Reactivity of this antibody to rat is not confirmed in our laboratory. However, it is reported that this antibody reacts rat brain lysate²⁾.

Entrez Gene ID 23705 (Human)

REFERENCE 1) Balan, S., *et al.*, *Cell Rep.* **24**, 1902-1915.e6 (2018) [FCM]
2) Rademacher, N., *et al.*, *Sci. Rep.* **6**, 35283 (2016) [IP]

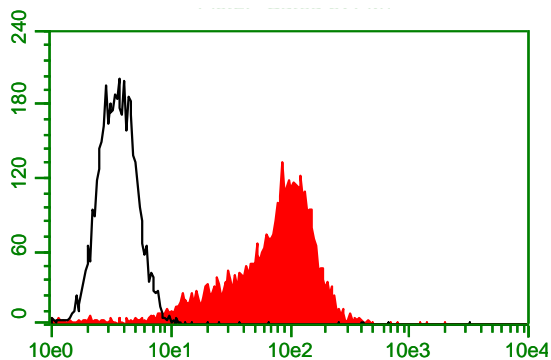
For more information, please visit our web site <https://ruo.mbl.co.jp/>.

The descriptions of the following protocols are examples. Each user should determine the appropriate condition.

Flow cytometric analysis

- 1) Wash the cells (5×10^5 cells/sample) 3 times with 1 mL of the Washing buffer [PBS containing 2% fetal calf serum (FCS)].
- 2) Add 10 μ L of Clear Back (MBL; code no. MTG-001) to the cell pellet after tapping. Mix well and incubate for 5 min. at room temperature.
- 3) Add 30 μ L of the primary antibody at the concentration as suggested in the **APPLICATION** diluted in the Washing buffer. Mix well and incubate for 20 min. at room temperature.
- 4) Wash the cells 1 time with 1 mL of the Washing buffer.
- 5) Add Streptavidin-FITC diluted with washing buffer. Mix well and incubate for 20 min. at room temperature.
- 6) Wash the cells 1 time with 1 mL of the Washing buffer.
- 7) Resuspend the cells with 500 μ L of the Washing buffer and analyze by a flow cytometer.

(Positive control for Flow cytometry; Transfectant)



Flow cytometric detection of human SynCAM

Open: Parental cell

Closed: SynCAM transfectant

Antibody: Anti-SynCAM (TSLC1/CADM1) mAb-Biotin (CM004-6)