

# Anti-SynCAM (TSLC1/CADM1) mAb-PE

**CODE No.** CM004-5

**CLONALITY** Monoclonal  
**CLONE** 3E1  
**ISOTYPE** Chicken IgY  
**QUANTITY** 1 mL (50 tests)

**SOURCE** Purified IgY from hybridoma supernatant  
**IMMUNOGEN** Recombinant SynCAM-Fc fusion protein  
**FORMULATION** PBS containing 1% BSA and 0.09% NaN<sub>3</sub>

\*Azide may react with copper or lead in plumbing system to form explosive metal azides. Therefore, always flush plenty of water when disposing materials containing azide into drain.

**STORAGE** This antibody solution is stable for one year from the date of purchase when stored at 4°C.

**APPLICATION**  
Flow cytometry 20 µL (ready for use)

## SPECIES CROSS REACTIVITY on FCM

Species	Human	Mouse	Rat	Hamster
Cell	Transfectant	Not tested	Not tested	Not tested
Reactivity	+			

**Entrez Gene ID** 23705 (Human)

**REFERENCE** 1) Ishihara, Y., *et al.*, *J. Virol.* **91**, e00974-17 (2017) [FCM]

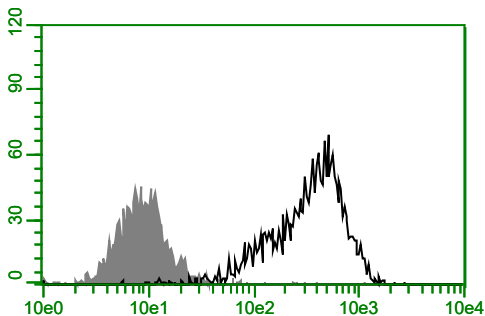
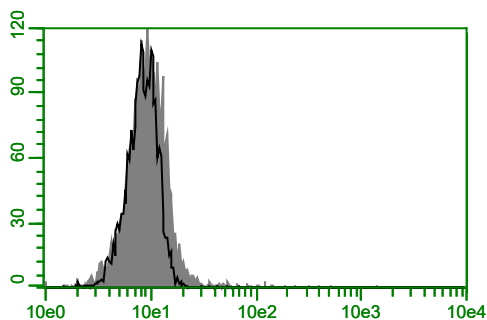
For more information, please visit our web site <https://ruo.mbl.co.jp/>.

The descriptions of the following protocols are examples. Each user should determine the appropriate condition.

### **Flow cytometric analysis**

- 1) Wash the cells ( $5 \times 10^5$  cells/sample) 3 times with 1 mL of Washing buffer [2% fetal calf serum (FCS) in PBS].
- 2) Add 10  $\mu$ L of Clear Back (MBL; code no. MTG-001) to the cell pellet after tapping. Mix well and incubate for 10 min. at room temperature.
- 3) Add 20  $\mu$ L of the primary antibody as suggested in the **APPLICATION**. Mix well and incubate for 20 min. at room temperature.
- 4) Wash the cells once with 1 mL of the Washing buffer.
- 5) Resuspend the cells with 500  $\mu$ L of the Washing buffer and analyze by a flow cytometer.

(Positive control for Flow cytometry; Transfectant)



### ***Flow cytometric detection of human SynCAM***

Upper: Parental cell

Lower: SynCAM transfectant

Open: Anti-SynCAM (TSLC1/CADM1) mAb-PE (MBL, code no. CM004-5)

Closed: Normal Chicken IgY (MBL, code no. PM084)