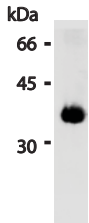


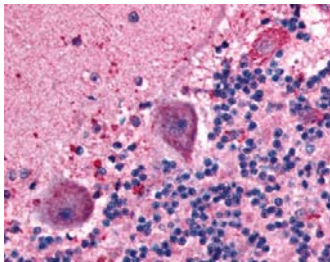
# Neuroscience

Antibodies & Kits  
for Neuroscience Research





Western blot analysis of Apolipoprotein E4 expression in human serum using M067-3.  
M067-3

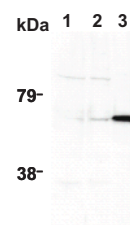
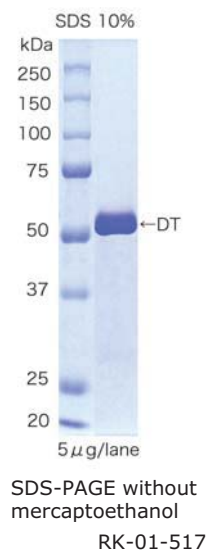


IHC: Brain, Neurons  
LS-A990

Product Name	Code No.	Product Type	Size
Mouse Abeta Monoclonal Antibody	AT-5009	Primary Antibody	100 µg
Abeta43 Cleavage Site Specific Polyclonal Antibody	AT-5010	Primary Antibody	25 µg
Adenylate cyclase, Bordetella pertussis	RK-01-501	Protein	50 µg
alpha-Synuclein Monoclonal Antibody	AT-5008	Primary Antibody	0.1 mg
Amphiphysin-1 (#2) Monoclonal Antibody	K0131-3	Primary Antibody	100 µg
Amphiphysin-1 (#3) Monoclonal Antibody	K0132-3	Primary Antibody	100 µg
Amyloid β Protein Monoclonal Antibody	M046-3	Primary Antibody	100 µg
Amyloid β/ Amyloid Precursor Protein	M066-3	Primary Antibody	100 µg
Human ApoA-1 Recombinant Protein	JM-4693-100	Protein	100 µg
ApoA5 Monoclonal Antibody	EP-5032	Primary Antibody	100 µg
Human ApoE2 Recombinant Protein	JM-4760-500	Protein	500 µg
Human ApoE3 Recombinant Protein	JM-4696-500	Protein	500 µg
Human ApoE4 Recombinant Protein	JM-4699-500	Protein	500 µg
ApoE4/Pan-ApoE ELISA Kit	7635	Kit	96 wells
ApoLipoprotein B Polyclonal Antibody	JM-3661-100	Primary Antibody	100 µg
Apolipoprotein E Monoclonal Antibody	M068-3	Primary Antibody	100 µg
Apolipoprotein E3	PV-P2003	Protein	50 µg
Apolipoprotein E4	M067-3	Primary Antibody	100 µg
ApoSAA Polyclonal Antibody	JM-5324-100	Primary Antibody	100 µg
Human apo-SAA	JM-4324-500	Protein	500 µg
APP Polyclonal Antibody	JM-6001-100	Primary Antibody	100 µg
Phospho-APP [Thr668] Polyclonal Antibody	AT-5014	Primary Antibody	2 blot
BACE-1 Polyclonal Antibody	AT-5006	Primary Antibody	100 µL
Brain-Specific Angiogenesis Inhibitor 1 (BAI1) Polyclonal Antibody	LS-A989	Primary Antibody	50 µL
Brain-Specific Angiogenesis Inhibitor 1 (BAI1) Polyclonal Antibody	LS-A990	Primary Antibody	50 µL
Brain-Specific Angiogenesis Inhibitor 1 (BAI1) Polyclonal Antibody	LS-A991	Primary Antibody	50 µL
Brain-Specific Angiogenesis Inhibitor 1 (BAI1) Blocking Peptide	LS-P989	Protein	50 µg
Brain-Specific Angiogenesis Inhibitor 1 (BAI1) Blocking Peptide	LS-P990	Protein	50 µg
Brain-Specific Angiogenesis Inhibitor 1 (BAI1) Blocking Peptide	LS-P991	Protein	50 µg
Brain-Specific Angiogenesis Inhibitor 2 (BAI2) Polyclonal Antibody	LS-A981	Primary Antibody	50 µL
Brain-Specific Angiogenesis Inhibitor 2 (BAI2) Polyclonal Antibody	LS-A982	Primary Antibody	50 µL
Brain-Specific Angiogenesis Inhibitor 2 (BAI2) Polyclonal Antibody	LS-A984	Primary Antibody	50 µL
Brain-Specific Angiogenesis Inhibitor 2 (BAI2) Blocking Peptide	LS-P981	Protein	50 µg
Brain-Specific Angiogenesis Inhibitor 2 (BAI2) Blocking Peptide	LS-P982	Protein	50 µg
BAI3 (Brain-Specific Angiogenesis Inhibitor 3) Polyclonal Antibody	LS-A3583	Primary Antibody	50 µL
Brain-Specific Angiogenesis Inhibitor 3 (BAI3) Polyclonal Antibody	LS-A978	Primary Antibody	50 µL
Brain-Specific Angiogenesis Inhibitor 3 (BAI3) Polyclonal Antibody	LS-A979	Primary Antibody	50 µL
Brain-Specific Angiogenesis Inhibitor 3 (BAI3) Blocking Peptide	LS-P978	Protein	50 µg
Brain-Specific Angiogenesis Inhibitor 3 (BAI3) Blocking Peptide	LS-P979	Protein	50 µg



Product Name	Code No.	Product Type	Size
human BDNF	JM-4004-10	Protein	10 µg
BDNF Polyclonal Antibody	JM-5004-100	Primary Antibody	100 µg
beta-Amyloid (Abeta) (N-terminal) Polyclonal Antibody	AT-5002	Primary Antibody	50 µg
beta-Amyloid (Abeta) (N-terminal) Polyclonal Antibody	AT-5003	Primary Antibody	100 µg
beta-Amyloid (Abeta) (pan) Polyclonal Antibody	AT-5001	Primary Antibody	100 µg
beta-Amyloid 42 Cleavage Site Specific Polyclonal Antibody	AT-5011	Primary Antibody	25 µg
Botulinum C3 enzyme, Clostridium botulinum	RK-01-513	Protein	10 µg
CAF-1 Monoclonal Antibody	K0116-3	Primary Antibody	100 µg
Calreticulin Blocking Peptide	JM-3077BP-50	Protein	50 µg
Calreticulin Polyclonal Ab	JM-3077-100	Protein	100 µg
Cholera toxin, Vibrio cholerae	RK-01-511	Protein	100 µg
Clostridium perfringens toxin	RK-01-509	Protein	50 µg
human CNTF	JM-4017-20	Protein	20 µg
Creatinine Assay Kit	JM-K625-100	Kit	100 assays
Creatinine Assay Kit	JM-K635-100	Kit	100 assays
Phospho-Dab1 [Ser491] Polyclonal Antibody	AT-5029	Primary Antibody	10 blot
Phospho-Dab1 [Tyr198] Polyclonal Antibody	AT-5028	Primary Antibody	100 µL
Phospho-Dab1 [Tyr220] Polyclonal Antibody	AT-5013	Primary Antibody	10 blot
DARPP-32 Polyclonal Antibody	JM-3386-100	Primary Antibody	100 µg
Phospho-DARPP-32(Thr75) Polyclonal Antibody	JM-3651-100	Primary Antibody	100 µL
Dermonecrotizing toxin, Bordetella bronchiseptica	RK-01-505	Protein	10 µg
Diphtheria toxin mutant CRM197 Protein	RK-01-515	Protein	200 µg
Diphtheria toxin Protein	RK-01-517	Protein	200 µg
Drebrin, Chicken	D029-3	Primary Antibody	100 µg
Dynamamin Monoclonal Antibody	K0133-3	Primary Antibody	100 µg
Eosinophil-derived neurotoxin (EDN)	M022-3	Primary Antibody	100 µL
Fyn/SLK (Src-Like Kinase) Polyclonal Antibody	JM-3746-100	Primary Antibody	100 µL
GDF-15 Polyclonal Antibody	EP-5033	Primary Antibody	100 µg
GDNF Polyclonal Antibody	JM-5098-100	Primary Antibody	100 µg
GFAP Monoclonal Antibody	D097-3	Primary Antibody	100 µg
TRIAL SIZE Anti-GFAP Monoclonal Antibody	D097-3S	Primary Antibody	10 µg
Phospho-GFAP (Thr7) Monoclonal Antibody	D098-3	Primary Antibody	100 µg
GFR α-1 Polyclonal Antibody	JM-6201-100	Primary Antibody	100 µg
GPR083 (poly)	PM041	Primary Antibody	100 µg
Neuropeptide FF 1 Receptor (GPR147) Polyclonal Antibody	LS-A1903	Primary Antibody	50 µL
Neuropeptide FF 1 Receptor (GPR147) Polyclonal Antibody	LS-A1905	Primary Antibody	50 µL
Neuropeptide FF 1 Receptor (GPR147) Blocking Peptide	LS-P1903	Protein	50 µg
Neuropeptide FF 1 Receptor (GPR147) Blocking Peptide	LS-P1905	Protein	50 µg
Neuromedin U Receptor 1 (GPR66) Polyclonal Antibody	LS-A396	Primary Antibody	50 µL
Neuromedin U Receptor 1 (GPR66) Polyclonal Antibody	LS-A397	Primary Antibody	50 µL
Neuromedin U Receptor 1 (GPR66) Blocking Peptide	LS-P396	Protein	50 µg
Neuromedin U Receptor 1 (GPR66) Blocking Peptide	LS-P397	Protein	50 µg
Neuropeptide FF 2 Receptor (GPR74) Polyclonal Antibody	LS-A3302	Primary Antibody	50 µL

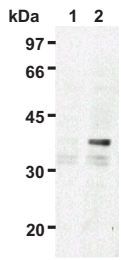


Western blot analysis of GPR83 expression in mouse CD4<sup>+</sup>CD25<sup>-</sup> T cells (1), mouse CD4<sup>+</sup>CD25<sup>+</sup> T cells (2) and transfectant (3) using PM041.

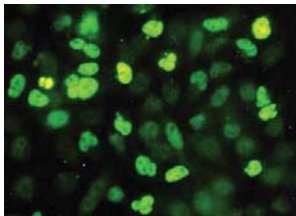
PM041



Product Name	Code No.	Product Type	Size
Neuropeptide FF 2 Receptor (GPR74) Polyclonal Antibody	LS-A3304	Primary Antibody	50 µL
Neuropeptide FF 2 Receptor (GPR74) Polyclonal Antibody	LS-A463	Primary Antibody	50 µL
Neuropeptide FF 2 Receptor (GPR74) Blocking Peptide	LS-P3302	Protein	50 µg
Neuropeptide FF 2 Receptor (GPR74) Blocking Peptide	LS-P3304	Protein	50 µg
Neuropeptide FF 2 Receptor (GPR74) Blocking Peptide	LS-P463	Protein	50 µg
Human HB-EGF [4G10] Monoclonal Antibody	RK-71-501	Primary Antibody	50 µg
Human HB-EGF [4G10] Monoclonal Antibody-Biotin	RK-71-503	Primary Antibody	50 µg
Rat HES1/KNP-1 Monoclonal Antibody	D134-3	Primary Antibody	100 µg
HTR2C Polyclonal Antibody	JM-3685-100	Primary Antibody	100 µg
M6a Monoclonal Antibody	D055-3	Primary Antibody	100 µg
Math1 Polyclonal Antibody	JM-3658-100	Primary Antibody	100 µl
Rabbit Anti-MATH-2 Polyclonal Antibody	EP-5031	Primary Antibody	100 µg
Murine Calretinin Recombinant Protein	JM-4809-5	Protein	5 µg
Musashi-1	D270-3	Primary Antibody	100 µg
NAIP Polyclonal Antibody	BV-3228-3	Primary Antibody	100 µg
NCS-1 Polyclonal Antibody	JM-3693-100	Primary Antibody	100 µg
Nectin-3 (CD113) Polyclonal Antibody	JM-3821-100	Primary Antibody	100 µg
Nectin-3/CD113 Peptide	JM-3821BP-50	Protein	50 µg
Nestin Monoclonal Antibody	K0199-3	Primary Antibody	100 µg
Neuroepithelial Cell Transforming Gene 1 (NET1) Polyclonal Antibody	LS-A3409	Primary Antibody	50 µg
Neuroepithelial Cell Transforming Gene 1 (NET1) Polyclonal Antibody	LS-A3412	Primary Antibody	50 µg
Neuroepithelial Cell Transforming Gene 1 (NET1) Blockin q Peptide	LS-P3412	Protein	50 µg
Neurexin Polyclonal Antibody	JM-3428-100	Primary Antibody	100 µl
Neuromedin B Receptor Polyclonal Antibody	LS-A825	Primary Antibody	50 µL
Neuromedin B Receptor Polyclonal Antibody	LS-A828	Primary Antibody	50 µL
Neuromedin B Receptor Blocking Peptide	LS-P825	Protein	50 µg
Neuromedin B Receptor Blocking Peptide	LS-P828	Protein	50 µg
Neuromedin U Receptor 2 Polyclonal Antibody	LS-A422	Primary Antibody	50 µL
Neuromedin U Receptor 2 Polyclonal Antibody	LS-A423	Primary Antibody	50 µL
Neuromedin U Receptor 2 Blocking Peptide	LS-P422	Protein	50 µg
Neuromedin U Receptor 2 Blocking Peptide	LS-P423	Protein	50 µg
Neuropeptide Y Receptor Type 1 Polyclonal Antibody	LS-A1064	Primary Antibody	50 µL
Neuropeptide Y Receptor Type 1 Polyclonal Antibody	LS-A1065	Primary Antibody	50 µL
Neuropeptide Y Receptor Type 1 Blocking Peptide	LS-P1064	Protein	50 µg
Neuropeptide Y Receptor Type 1 Blocking Peptide	LS-P1065	Protein	50 µg
Neuropeptide Y Receptor Type 2 Polyclonal Antibody	LS-A1061	Primary Antibody	50 µL
Neuropeptide Y Receptor Type 2 Blocking Peptide	LS-P1061	Protein	50 µg
Neuropeptide Y Receptor Type 4 Polyclonal Antibody	LS-A1069	Primary Antibody	50 µL
Neuropeptide Y Receptor Type 4 Polyclonal Antibody	LS-A1070	Primary Antibody	50 µL
Neuropeptide Y Receptor Type 4 Polyclonal Antibody	LS-A1071	Primary Antibody	50 µL
Neuropeptide Y Receptor Type 4 Blocking Peptide	LS-P1069	Protein	50 µg
Neuropeptide Y Receptor Type 4 Blocking Peptide	LS-P1070	Protein	50 µg
Neuropeptide Y Receptor Type 4 Blocking Peptide	LS-P1071	Protein	50 µg

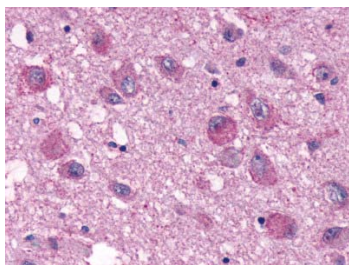


Western blot analysis of HES1 expression in HES1 transfected HeLa cells(+Dox) (1) and HES1 transfected HeLa cells(+Dox) (2) using D134-3.



Immunocytochemical detection of HES1 on HES1 transfected HeLa cells(+Dox) using D134-3.

D134-3



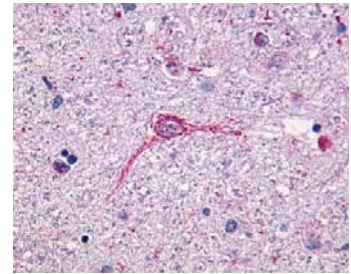
IHC: Brain

LS-A1069

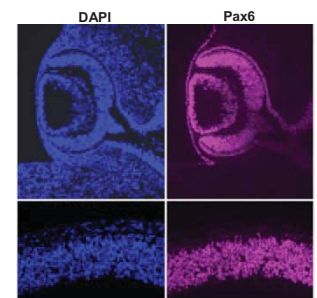




Product Name	Code No.	Product Type	Size
Neuropeptide Y Receptor Type 5 Polyclonal Antibody	LS-A1072	Primary Antibody	50 µL
Neuropeptide Y Receptor Type 5 Polyclonal Antibody	LS-A1074	Primary Antibody	50 µL
Neuropeptide Y Receptor Type 5 Polyclonal Antibody	LS-A1075	Primary Antibody	50 µL
Neuropeptide Y Receptor Type 5 Polyclonal Antibody	LS-A1077	Primary Antibody	50 µL
Neuropeptide Y Receptor Type 5 Blocking Peptide	LS-P1072	Protein	50 µg
Neuropeptide Y Receptor Type 5 Blocking Peptide	LS-P1074	Protein	50 µg
Neuropeptide Y Receptor Type 5 Blocking Peptide	LS-P1075	Protein	50 µg
Neuropeptide Y Receptor Type 5 Blocking Peptide	LS-P1077	Protein	50 µg
Neuropsin, Mouse, Monoclonal Antibody	M020-3	Primary Antibody	100 µg
Neuropsin, Mouse, Monoclonal Antibody	M021-3	Primary Antibody	100 µL
Neurotensin Receptor Type 2 (NTR2) Polyclonal Antibody	LS-A1269	Primary Antibody	50 µL
Human NGF- β	JM-4303-20	Protein	20 µg
Neuromedin K Receptor-Like Protein (NK4R) Polyclonal Antibody	LS-A1820	Primary Antibody	50 µL
Neuromedin K Receptor-Like Protein (NK4R) Polyclonal Antibody	LS-A1822	Primary Antibody	50 µL
Neuromedin K Receptor-Like Protein (NK4R) Blocking Peptide	LS-P1820	Protein	50 µg
Neuromedin K Receptor-Like Protein (NK4R) Blocking Peptide	LS-P1822	Protein	50 µg
NPBWR1 (Neuropeptides B/W receptor 1(GPR7)) Polyclonal Antibody	LS-A174	Primary Antibody	50 µL
NSE, Human	PD002-H	Primary Antibody	6 ml
NSF (N-ethylmaleimide-sensitive factor) Polyclonal Antibody	JM-3541-100	Primary Antibody	100 µg
Human NT-3	JM-4306-10	Protein	10 µg
Human NT-4	JM-4309-10	Protein	10 µg
Neurotrophin 3 (NTF3) Polyclonal Antibody	LS-A9556	Primary Antibody	50 µL
Neurotensin Receptor Type 1 (NTR1) Polyclonal Antibody	LS-A935	Primary Antibody	50 µL
Neurotensin Receptor Type 1 (NTR1) Polyclonal Antibody	LS-A938	Primary Antibody	50 µL
Neurotensin Receptor Type 1 (NTR1) Polyclonal Antibody	LS-A939	Primary Antibody	50 µL
Neurotensin Receptor Type 1 (NTR1) Blocking Peptide	LS-P935	Protein	50 µg
Neurotensin Receptor Type 1 (NTR1) Blocking Peptide	LS-P938	Protein	50 µg
Neurotensin Receptor Type 2 (NTR2) Polyclonal Antibody	LS-A3747	Primary Antibody	50 µL
Neurotensin Receptor Type 2 (NTR2) Blocking Peptide	LS-P3747	Protein	50 µg
TRIAL SIZE Anti-Nucleolin, Human, Monoclonal Antibody	M019-3S	Primary Antibody	10µg/50µL
Pasteurella multocida toxin	RK-01-507	Protein	50 µg
PAX6 Polyclonal Antibody	JM-3636-100	Primary Antibody	100 µg
mouse Pax6 polyclonal antibody	PD022	Primary Antibody	100 µL
Pertussis toxin, Bordetella pertussis	RK-01-503	Protein	25 µg
Human Pleiotrophin (PTN)	JM-4469-20	Protein	20 µg
PML Polyclonal Antibody	PM001	Primary Antibody	200 µg
Presenilin 1 Polyclonal Antibody	JM-3481-100	Primary Antibody	100 µg
Presenilin 2 Polyclonal Antibody	JM-3482-100	Primary Antibody	100 µg
PYBG (Glycogen Phosphorylase, Brain Form) Polyclonal Antibody	LS-A1489	Primary Antibody	50 µL

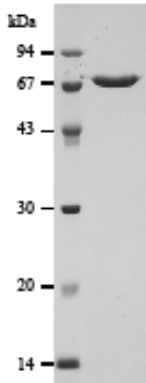


IHC: Brain, Neurons and glia  
LS-A935

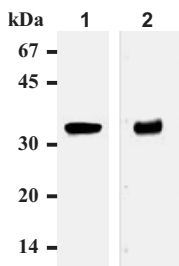


Immunohistochemical detection of Pax6 on frozen section of SD rat whole embryo at E13.5 with PD022. (upper panels: eye, lower panels: cerebral cortex)

PD022



SLO analyzed by SDS-PAGE.  
RK-01-531



Western blot analysis of syntaxin-1  
expression in mouse brain extracts (1)  
and PC12 cells (2) using K0117-3.  
K0117-3

Product Name	Code No.	Product Type	Size
TRIAL SIZE Anti-phospho-RB (ser780) Monoclonal Antibody	M045-3S	Primary Antibody	10µg/50µL
Reelin/CR-50 Monoclonal Antibody	D223-3	Primary Antibody	100 µg
Sema4a Monoclonal Antibody	D152-3	Primary Antibody	100 µg
Sema4a, FITC Labeled Monoclonal Antibody	D152-4	Primary Antibody	50µg/1mL
Sox1 Polyclonal Antibody	JM-3822-100	Primary Antibody	100 µg
Sox1 Peptide	JM-3822BP-50	Protein	50 µg
Streptolysin O protein	RK-01-531	Protein	20 µg
Synapsin Polyclonal Antibody	JM-6008-100	Primary Antibody	100 µg
Synapsin Peptide	JM-6008BP-50	Protein	50 µg
Synaptojanin Monoclonal Antibody	K0130-3	Primary Antibody	100 µg
Synaptophysin Monoclonal Antibody	D073-3	Primary Antibody	100 µg
Synaptotagmin1 Monoclonal Antibody	D157-3	Primary Antibody	100 µg
Synaptotagmin1/2 Monoclonal Antibody	D156-3	Primary Antibody	100 µg
Synaptotagmin2 Monoclonal Antibody	D158-3	Primary Antibody	100 µg
SynCAM/TSLC1 Monoclonal Antibody	CM004-3	Primary Antibody	100 µg
SynCAM/TSLC1 Monoclonal Antibody	CM005-3	Primary Antibody	100 µg
Syntaxin-1 Monoclonal Antibody	K0117-3	Primary Antibody	100 µg
Syntaxin-6 Monoclonal Antibody	K0118-3	Primary Antibody	100 µg
Tau Polyclonal Antibody	JM-3549-100	Primary Antibody	100 µg
tau (421/422) Monoclonal Antibody	AT-5005	Primary Antibody	50 µg
Tau (pan) Monoclonal Antibody	AT-5004	Primary Antibody	100 µg
Phospho-Tau [pSpS199/202] Polyclonal Antibody	AT-5027	Primary Antibody	100 µL
Phospho-Tau [Ser199] Polyclonal Antibody	AT-5015	Primary Antibody	100 µL
Phospho-Tau [Ser214] Polyclonal Antibody	AT-5018	Primary Antibody	100 µL
Phospho-Tau [Ser262] Polyclonal Antibody	AT-5020	Primary Antibody	100 µL
Phospho-Tau [Ser356] Polyclonal Antibody	AT-5021	Primary Antibody	100 µL
Phospho-Tau [Ser400] Polyclonal Antibody	AT-5023	Primary Antibody	100 µL
Phospho-Tau [Ser404] Polyclonal Antibody	AT-5024	Primary Antibody	100 µL
Phospho-Tau [Ser409] Polyclonal Antibody	AT-5025	Primary Antibody	100 µL
Phospho-Tau [Ser422] Polyclonal Antibody	AT-5026	Primary Antibody	100 µL
Phospho-Tau [Thr205] Polyclonal Antibody	AT-5016	Primary Antibody	100 µL
Phospho-Tau [Thr212] Polyclonal Antibody	AT-5017	Primary Antibody	100 µL
Phospho-Tau [Thr217] Polyclonal Antibody	AT-5012	Primary Antibody	10 blot
Phospho-Tau [Thr231] Polyclonal Antibody	AT-5019	Primary Antibody	100 µL
Tau-13 Monoclonal Ab	JM-3453-100	Primary Antibody	100 µl
Neuronal Cell Death Inducible..Putative Kinase (TRB-3) polyclonal..antibod y	LS-A2976	Primary Antibody	50 µg
Neuronal Cell Death Inducible Putative Kinase (TRB-3) Polyclonal Antibod y	LS-A3372	Primary Antibody	50 µg
Neuronal Cell Death Inducible Putative Kinase (TRB-3) Blockin g Pe ptide	LS-P2976	Protein	50 µg
Neuronal Cell Death Inducible Putative Kinase (TRB-3) Blockin g Pe ptide	LS-P3372	Protein	50 µg
TrkA Polyclonal Antibody	JM-3194-100	Primary Antibody	100 µg
Phospho-TrkA (Tyr490) Polyclonal Antibody	JM-3503-100	Primary Antibody	100 µg
CycLex TrkA Kinase Assay/Inhibitor Screening Kit	CY-1091	Kit	96 wells
CycLex TrkA Positive Control	CY-E1091	Protein	100 µnits

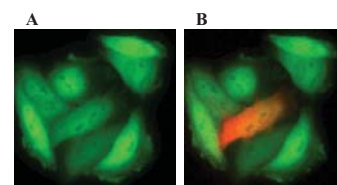


Product Name	Code No.	Product Type	Size
TrkB Polyclonal Antibody	JM-3593-100	Primary Antibody	100 µg
VCP Polyclonal Antibody	JM-3756-100	Primary Antibody	100 µl
Rabbit Anti-YOTIAO/AKAP9 Polyclonal Antibody	EP-5030	Primary Antibody	100 µg
Zic2 Polyclonal Antibody	EP-5034	Primary Antibody	100 µg
β-Secretase Fluometric Assay Kit	JM-K360-100	Kit	100 assays
β-Secretase Inhibitor I	JM-7501-1	Reagent	1 mg
β-Secretase Inhibitor II	JM-7502-1	Reagent	1 mg



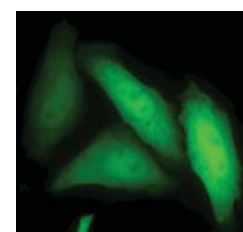
## Fluorescent Proteins

Product Name	Code No.	Product Type	Size
CoralHue <sup>®</sup> pKaede-S1Fluorescent Protein Vector	AM-V0011	Plasmid	20 µg
CoralHue <sup>®</sup> Kaede Fluorescent Protein Expression Vector pKaede-MC1	AM-V0012	Plasmid	20 µg
CoralHue <sup>®</sup> Kaede Fluorescent Protein Expression Vector pKaede-MN1	AM-V0013	Plasmid	20 µg
CoralHue <sup>®</sup> pAG-S1Fluorescent Protein Vector	AM-V0021	Plasmid	20 µg
CoralHue Humanized monomeric Azami-Green (phmAG1-MNLinker)	AM-V0030	plasmid	20 µg
CoralHue <sup>®</sup> pmAG-S1Fluorescent Protein Vector	AM-V0031	Plasmid	20 µg
CoralHue <sup>®</sup> Monomeric Azami Green Fluorescent Protein Expression Vector pmAG-MC1	AM-V0032	Plasmid	20 µg
CoralHue <sup>®</sup> Monomeric Azami Green Fluorescent Protein Expression Vector pmAG-MN1	AM-V0033	Plasmid	20 µg
CoralHue <sup>®</sup> phmAG1-S1Humanized Monomeric Azami Green Fluorescent Protein Vector	AM-V0034	Plasmid	20 µg
CoralHue <sup>®</sup> Humanized Monomeric Azami Green Fluorescent Protein Expression Vector phmAG1-MC1	AM-V0035	Plasmid	20 µg
CoralHue <sup>®</sup> Humanized Monomeric Azami Green Fluorescent Protein Expression Vector phmAG1-MN1	AM-V0036	Plasmid	20 µg
CoralHue Humanized monomeric Azami-Green (phmAG1-MCLinker)	AM-V0039	plasmid	20 µg
CoralHue <sup>®</sup> Kusabira-Orange (Wild type) Fluorescent Protein Vector	AM-V0041	Plasmid	20 µg
CoralHue <sup>®</sup> Humanized Kusabira-Orange (Wild type) Fluorescent Protein Vector	AM-V0044	Plasmid	20 µg
CoralHue <sup>®</sup> Humanized Kusabira-Orange Fluorescent Expression Protein Vector pmKO1-MC1	AM-V0045	Plasmid	20 µg
CoralHue <sup>®</sup> Humanized Kusabira-Orange Fluorescent Expression Protein Vector pmKO1-MN1	AM-V0046	Plasmid	20 µg
CoralHue <sup>®</sup> Humanized monomeric Kusabira-Orange (phmKO1-MNLinker)	AM-V0050	plasmid	20 µg
CoralHue <sup>®</sup> Monomeric Kusabira-Orange Fluorescent Protein Vector	AM-V0051	Plasmid	20 µg
CoralHue <sup>®</sup> Monomeric Kusabira-Orange Fluorescent Expression Protein Vector pmKO1-MC1	AM-V0052	Plasmid	20 µg
CoralHue <sup>®</sup> Monomeric Kusabira-Orange Fluorescent Expression Protein Vector pmKO1-MN1	AM-V0053	Plasmid	20 µg
CoralHue <sup>®</sup> Humanized monomeric Kusabira-Orange (phmKO1-S1)	AM-V0054	Plasmid	20 µg

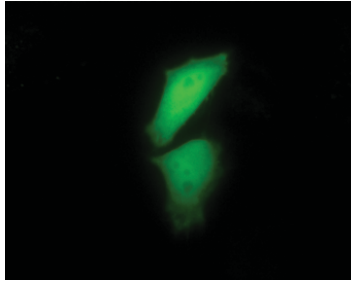


**Kaede expression in HeLa cells**  
A; Before UV irradiation  
B; After UV irradiation

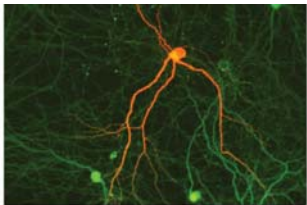
AM-V0013



**CoralHue<sup>®</sup> hmAG1 expression in HeLa cells**  
AM-V0034



CoralHue<sup>®</sup> hDG1 expression in HeLa cells.  
AM-V0070



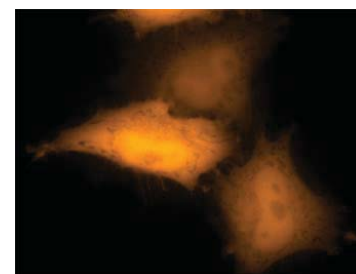
CoralHue<sup>™</sup> KikGR1 expression in neuron  
Photoconverted KikGR1 emits red fluorescence,  
while the fluorescence of untreated KikGR1 is green.  
AM-V0081

Product Name	Code No.	Product Type	Size
CoralHue <sup>®</sup> Humanized monomeric Kusabira-Orange (phmKO1-MC1)	AM-V0055	Plasmid	20 µg
CoralHue <sup>®</sup> Humanized monomeric Kusabira-Orange (phmKO1-MN1)	AM-V0056	Plasmid	20 µg
CoralHue <sup>®</sup> Humanized monomeric Kusabira-Orange (phmKO1-MCLinker)	AM-V0059	plasmid	20 µg
CoralHue <sup>®</sup> Midoriishi-Cyan (Wild type) Fluorescent Protein Vector	AM-V0061	Plasmid	20 µg
CoralHue <sup>®</sup> humanized Dronpa-Green (phDG1-MNLinker)	AM-V0070	Plasmid	20 µg
CoralHue <sup>®</sup> Dronpa Green-pDG1-S1Fluorescent Protein Vector	AM-V0071	Plasmid	20 µg
CoralHue <sup>®</sup> Dronpa Green Fluorescent Protein Expression Vector pDG1-MC1	AM-V0072	Plasmid	20 µg
CoralHue <sup>®</sup> Dronpa Green Fluorescent Protein Expression Vector pDG1-MN1	AM-V0073	Plasmid	20 µg
CoralHue <sup>®</sup> humanized Dronpa-Green (phDG1-MCLinker)	AM-V0079	Plasmid	20 µg
CoralHue <sup>®</sup> Humanized Kikume Green-Red (phKikGR1-MNLinker)	AM-V0080	plasmid	20 µg
CoralHue <sup>®</sup> Kikume Green-Red (pKikGR1-S1) Fluorescent Protein Vector	AM-V0081	Plasmid	20 µg
CoralHue <sup>®</sup> Kikume Green-Red (pKikGR1-MC1) Fluorescent Expression Vector	AM-V0082	Plasmid	20 µg
CoralHue <sup>®</sup> Kikume Green-Red (pKikGR1-MN1) Fluorescent Expression Vector	AM-V0083	Plasmid	20 µg
CoralHue <sup>®</sup> Humanized Kikume Green-Red (phKikGR1-S1)	AM-V0084	Plasmid	20 µg
CoralHue <sup>®</sup> Humanized Kikume Green-Red (phKikGR1-MC1)	AM-V0085	Plasmid	20 µg
CoralHue <sup>®</sup> Humanized Kikume Green-Red (phKikGR1-MN1)	AM-V0086	Plasmid	20 µg
CoralHue <sup>®</sup> Humanized Kikume Green-Red (phKikGR1-MCLinker)	AM-V0089	plasmid	20 µg
CoralHue <sup>®</sup> humanized Monomeric Keima-Red (phmKeima-Red-MNLinker)	AM-V0090	Plasmid	20 µg
CoralHue <sup>®</sup> Monomeric Keima Red pm Keima-Red-S1 Fluorescent Protein Vector	AM-V0091	Plasmid	20 µg
CoralHue <sup>®</sup> Monomeric Keima Red Fluorescent Protein Expression Vector pm Keima-Red-MN1	AM-V0093	Plasmid	20 µg
CoralHue <sup>®</sup> humanized Monomeric Keima-Red(phmKeima-Red-S1)	AM-V0094	Plasmid	20 µg
CoralHue <sup>®</sup> humanized Monomeric Keima-Red(phmKeima-Red-MCLinker)	AM-V0099	Plasmid	20 µg
CoralHue <sup>®</sup> humanized Dimeric Keima-Red(phdKeima-Red-MNLinker)	AM-V0100	Plasmid	20 µg
CoralHue <sup>®</sup> Dimeric Keima Red Fluorescent Protein Vector-pdKeima-Red-S1	AM-V0101	Plasmid	20 µg
CoralHue <sup>®</sup> humanized Dimeric Keima-Red(phdKeima-Red-S1)	AM-V0104	Plasmid	20 µg
CoralHue <sup>®</sup> humanized Dimeric Keima-Red(phdKeima-Red-MCLinker)	AM-V0109	Plasmid	20 µg
CoralHue <sup>®</sup> humanized Midoriishi-Cyan (phmMiCy1-MNLinker)	AM-V0110	Plasmid	20 µg
CoralHue <sup>®</sup> monomeric Midoriishi-Cyan1 (pmMiCy1-S1)	AM-V0111	Plasmid	20 µg
CoralHue <sup>®</sup> humanized monomeric Midoriishi-Cyan1 (phmMiCy1-MC1)	AM-V0115	Plasmid	20µg

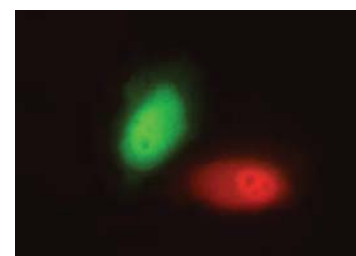




Product Name	Code No.	Product Type	Size
CoralHue <sup>®</sup> humanized monomeric Midoriishi-Cyan1 (phmMiCy1-MN1) (Biotech)	AM-V0116	Plasmid	20µg
CoralHue <sup>®</sup> humanized Midoriishi-Cyan (phmMiCy1-MCLinker)	AM-V0119	Plasmid	20 µg
CoralHue <sup>®</sup> Humanized dimeric Keima 570 (phdKeima570-MNLinker)	AM-V0120	Plasmid	20 µg
CoralHue <sup>®</sup> Dimeric Keima570 Fluorescent Protein Vector (pdKeima570-S1)	AM-V0121	Plasmid	20 µg
CoralHue <sup>®</sup> humanized Dimeric Keima 570(phdKeima570-S1)	AM-V0124	Plasmid	20 µg
CoralHue <sup>®</sup> humanized dimeric Keima570 (phdKeima570-MCLinker)	AM-V0129	Plasmid	20 µg
CoralHue <sup>®</sup> Dronpa Green3 Fluorescent Protein Vector (pDG3-S1)	AM-V0131	Plasmid	20 µg
CoralHue <sup>®</sup> humanized Monomeric Kusabira-Orange 2 (phmKO2-MNLinker)	AM-V0140	Plasmid	20 µg
CoralHue <sup>®</sup> Monomeric Kusabira-Orange 2-S1	AM-V0141	Plasmid	20 µg
CoralHue <sup>®</sup> humanized Monomeric Kusabira-Orange 2-MC1	AM-V0145	Plasmid	20 µg
CoralHue <sup>®</sup> humanized Monomeric Kusabira-Orange 2-MN1	AM-V0146	Plasmid	20 µg
CoralHue <sup>®</sup> humanized Monomeric Kusabira-Orange 2 (phmKO2-MCLinker)	AM-V0149	Plasmid	20 µg
CoralHue <sup>®</sup> humanized monomeric Kikume Green-Red (phmKikGR1-MNLinker)	AM-V0150	Plasmid	20 µg
CoralHue <sup>®</sup> monomeric Kikume Green-Red (pmKikGR1-S1)	AM-V0151	Plasmid	20 µg
CoralHue <sup>®</sup> humanized monomeric Kikume Green-Red (phmKikGR1-MCLinker)	AM-V0159	Plasmid	20 µg
CoralHue <sup>®</sup> Monomeric Umikinoko-Green (pmUKG1-S1)	AM-V0161	Plasmid	20 µg
CoralHue <sup>®</sup> Humanized monomeric Umikinoko-Green (phmUkG1-S1)	AM-V0164	Plasmid	20 µg
CoralHue <sup>®</sup> Humanized monomeric Umikinoko-Green (phmUkG1-MC1)	AM-V0165	Plasmid	20 µg
CoralHue <sup>®</sup> Humanized monomeric Umikinoko-Green (phmUkG1-MN1)	AM-V0166	Plasmid	20 µg
CoralHue <sup>®</sup> Monomeric Azami Green Mitochondria-targeted mAG1Expression Plasmid	AM-V0201	Plasmid	20 µg
CoralHue <sup>®</sup> Monomeric Azami Green ER-targeted mAG1 Expression Plasmid	AM-V0202	Plasmid	20 µg
CoralHue <sup>®</sup> Monomeric Azami Green Plasma Membrane-targeted mAG1 Expression Plasmid	AM-V0203	Plasmid	20 µg
CoralHue <sup>®</sup> Azami Green Nucleoplasm-targeted AG Expression Plasmid	AM-V0214	Plasmid	20 µg
CoralHue <sup>®</sup> Monomeric Kusabira Orange Mitochondria-targeted mKO1 Expression Plasmid	AM-V0221	Plasmid	20 µg
CoralHue <sup>®</sup> Monomeric Kusabira Orange ER-targeted mKO1 Expression Plasmid	AM-V0222	Plasmid	20 µg
CoralHue <sup>®</sup> Monomeric Kusabira Orange Plasma Membrane-targeted mKO1 Expression Plasmid	AM-V0223	Plasmid	20 µg
CoralHue <sup>®</sup> Kusabira Orange Nucleoplasm-targeted KO Expression Plasmid	AM-V0234	Plasmid	20 µg
CoralHue <sup>®</sup> Monomeric Keima Red Mitochondria-targeted mKeima-Red Expression Plasmid	AM-V0251	Plasmid	20 µg

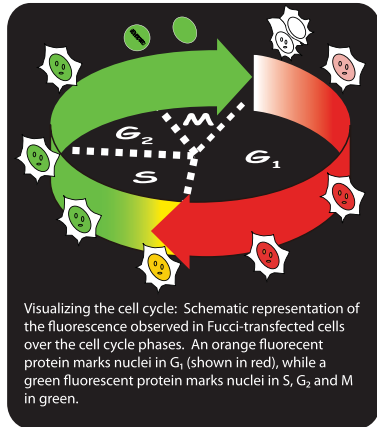


CoralHue<sup>®</sup> hmKO2 expression in HeLa cells  
AM-V0145



CoralHue<sup>®</sup> hmKikGR1 expression in HeLa cells. Photoconverted hmKikGR1 emits red fluorescence, while the fluorescence of untreated hmKikGR1 is green.

AM-V0150

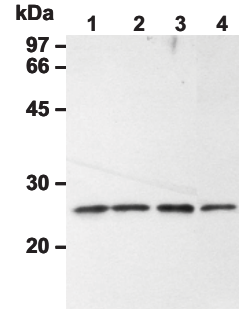


AM-V9001  
AM-V9003  
AM-V9014  
AM-V9016

Product Name	Code No.	Product Type	Size
CoralHue® Monomeric Keima Red Plasma Membrane-targeted mKeima-Red Expression Plasmid	AM-V0253	Plasmid	20 µg
CoralHue® Nucleoplasm-targeted humanized dimeric Keima-Red Expression Plasmid (pNP- h d Keima-Red )	AM-V0274	Plasmid	20 µg
pFucci-G1 Orange (cloning vector)	AM-V9001	Plasmid	20 µg
pFucci-G1 Orange (expression vector)	AM-V9003	Plasmid	20 µg
pFucci-S/G2/M Green (cloning vector)	AM-V9014	Plasmid	20 µg
pFucci-S/G2/M Green (Expression vector)	AM-V9016	Plasmid	20 µg
CoralHue® Photoconvertible Subcloning set-Kaede+Kikume Green-Red	AM-VS0001	Plasmid	2 x 20 µg
CoralHue® Photoconvertible Expression N-term. set-Kaede+Kikume Green-Red	AM-VS0002	Plasmid	2 x 20 µg
CoralHue® Photoconvertible Expression C-term. set-Kaede+Kikume Green-Red	AM-VS0003	Plasmid	2 x 20 µg
CoralHue® Photoconvertible Subcloning set-Dronpa+Kaede+Kikume Green-Red	AM-VS0101	Plasmid	3 x 20 µg
CoralHue® Photoconvertible Expression N-term. set-Dronpa+Kaede+Kikume Green-Red	AM-VS0102	Plasmid	3 x 20 µg
CoralHue® Photoconvertible Expression C-term. set-Dronpa+Kaede+Kikume Green-Red	AM-VS0103	Plasmid	3 x 20 µg
CoralHue® Optimized Cloning set-pKaede-MC1+pKaede-MN1	AM-VS0201	Plasmid	2 x 20 µg
CoralHue® Optimized Cloning set-monomeric Azami-Green (pmAG1-MC1+pmAG1-MN1)	AM-VS0202	Plasmid	2 x 20 µg
CoralHue® Optimized Cloning set-humanized monomeric Azami-Green set (phmAG1-MC1+phmAG1-MN1)	AM-VS0203	Plasmid	2 x 20 µg
CoralHue® Optimized Cloning set-humanized Kusabira-Orange (phKO1-MC1+phKO1-MN1)	AM-VS0204	Plasmid	2 x 20 µg
CoralHue® Optimized Cloning set-monomeric Kusabira-Orange (pmKO1-MC1+pmKO1-MN1)	AM-VS0205	Plasmid	2 x 20 µg
CoralHue® Optimized Cloning set-humanized monomeric Kusabira-Orange (phmKO1-MC1+phmKO1-MN1)	AM-VS0206	Plasmid	2 x 20 µg
CoralHue® Optimized Cloning set-Dronpa-Green (pDG1-MC1+pDG1-MN1)	AM-VS0207	Plasmid	2 x 20 µg
CoralHue® Optimized Cloning set-Kikume Green-Red (pKikGR1-MC1+pKikGR1-MN1)	AM-VS0208	Plasmid	2 x 20 µg
CoralHue® Optimized Cloning set-humanized Kikume Green-Red (phKikGR1-MC1+phKikGR1-MN1)	AM-VS0209	Plasmid	2 x 20 µg
CoralHue® Optimized Cloning set-humanized monomeric Azami-Green (phmAG1 MC1+MN1+MC Linke r +MN Linker)	AM-VS0210	Plasmid	4 x 20 µg
CoralHue® Optimized Cloning set-humanized monomeric Kusabira-Orange (phmKO1 MC1+MN1+MC Linke r +MN Linker)	AM-VS0211	Plasmid	4 x 20 µg
CoralHue® Optimized Cloning set-humanized Kikume Green-Red (phKikGR1 MC1+MN1+MC Linker+MN Linker)	AM-VS0212	Plasmid	4 x 20 µg
CoralHue® Monomer/Wild-type Comparison Set-Azami-Green (pAG1-S1+pmAG1-S1)	AM-VS0301	Plasmid	2 x 20 µg
CoralHue® Monomer/Wild-type Comparison Set-Kusabira-Orange (pKO1-S1+pmKO1-S1)	AM-VS0302	Plasmid	2 x 20 µg
CoralHue® Monomer/Wild-type Comparison Set-humanized Kusabira-Orange (phKO1-S1+phmKO1-S1)	AM-VS0303	Plasmid	2 x 20 µg



Product Name	Code No.	Product Type	Size
CoralHue® Monomer/Wild-type Comparison Set-Keima-Red (pmKeima-Red-S+pdKeima-Red-S1)	AM-VS0304	Plasmid	2 x 20 µg
CoralHue® FRET Set-monomeric Kusabira-Orange+Midoriishi-Cyan1 (pmKO1-S1+pMiCy1-S1)	AM-VS0401	Plasmid	2 x 20 µg
CoralHue® monomeric Kusabira-Orange+monomeric Midoriishi-Cyan1 (pmKO1-S1+pmMiCy1-S1)	AM-VS0402	Plasmid	2 x 20 µg
CoralHue® Optimal Codon Usage Set-Azami-Green (pmAG1-S1+phmAG1-S1)	AM-VS0501	Plasmid	2 x 20 µg
CoralHue® Optimal Codon Usage Set-monomeric Azami-Green, C-term. (pmAG1-MC1+phmAG1-MC1)	AM-VS0502	Plasmid	2 x 20 µg
CoralHue® Optimal Codon Usage Set-monomeric Azami-Green, N-term. (pmAG1-MN1+phmAG1-MN1)	AM-VS0503	Plasmid	2 x 20 µg
CoralHue® Optimal Codon Usage Set-Kusabira-Orange (pKO1-S1+phKO1-S1)	AM-VS0504	Plasmid	2 x 20 µg
CoralHue® Optimal Codon Usage Set-monomeric Kusabira-Orange (pmKO1-S1+phmKO1-S1)	AM-VS0505	Plasmid	2 x 20 µg
CoralHue® Optimal Codon Usage Set-monomeric Kusabira-Orange, C-term. (pmKO1 MC1+phmKO1-MC1)	AM-VS0506	Plasmid	2 x 20 µg
CoralHue® Optimal Codon Usage Set-monomeric Kusabira-Orange, N-term. (pmKO1 MN1+phmKO1-MN1)	AM-VS0507	Plasmid	2 x 20 µg
CoralHue® Optimal Codon Usage Set-Kikume Green-Red set (pKikGR1-S1 + phKikGR -S1)	AM-VS0508	Plasmid	2 x 20 µg
CoralHue® Optimal Codon Usage Set-Kikume Green-Red (pKikGR1-MC1 + phKikGR1-MC1)	AM-VS0509	Plasmid	2 x 20 µg
CoralHue® Optimal Codon Usage Set-Kikume Green-Red set (pKikGR1-MN1 + phKikGR1-MN1)	AM-VS0510	Plasmid	2 x 20 µg
CoralHue® pFucci Set (G1 Orange (cloning vector) + S/G2/M Green (cloning vector))	AM-VS0601	Plasmid	2 x 20 µg
CoralHue® pFucci Set (G1 Orange (expression vector) + S/G2/M Green (Expression vector))	AM-VS0602	Plasmid	2 x 20 µg
CoralHue® pFucci Set (G1 Orange (cloning vector) + S/G2/M Green (Expression vector))	AM-VS0603	Plasmid	2 x 20 µg
CoralHue® pFucci Set (G1 Orange (expression vector) + S/G2/M Green (cloning vector))	AM-VS0604	Plasmid	2 x 20 µg



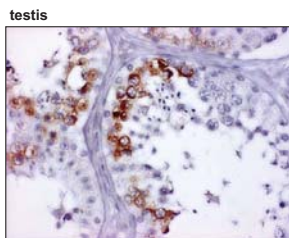
Western blot analysis of HP1  $\alpha$  expression in HeLa cells (1), Jurkat cells (2), Raji cells (3) and WR19L cells (4) using BMP001.

BMP001



## Solute Carriers

Product Name	Code No.	Product Type	Size
SLC2A1/GLUT1 (poly)	BMP007	Primary Antibody	100 µL
SLC2A4/GLUT4 (poly)	BMP008	Primary Antibody	100 µL
SLC1A3/GLAST1/EAAT1 (poly)	BMP009	Primary Antibody	100 µL
SLC1A1/EAAC1/AAT3 (poly)	BMP010	Primary Antibody	100 µL
SLC7A5/LAT1 (poly)	BMP011	Primary Antibody	100 µL
SLC4A1/AE1 (poly)	BMP012	Primary Antibody	100 µL
SLC3A1/rBAT (poly)	BMP013	Primary Antibody	100 µL
SLC19A2/THTR1 (poly)	BMP014	Primary Antibody	100 µL
SLC6A3 poly	BMP015	Primary Antibody	100 µL
SLC6A7 poly	BMP016	Primary Antibody	50 µL
SLC7A7 poly	BMP019	Primary Antibody	50 µL
SLC5A1 (poly)	BMP022	Primary Antibody	50 µL



**Immunohistochemical detection of SLC2A8 on paraffin embedded section of human testis with BMP035.** Tissue array (MBL; code no. COM01003) was used for this application.

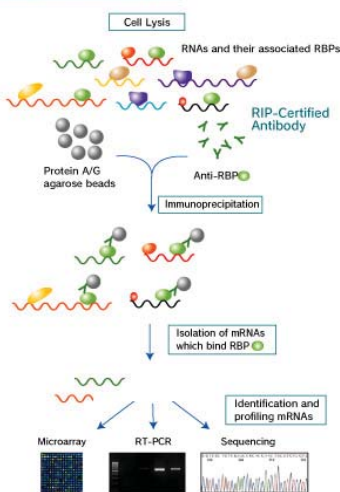
BMP035

Product Name	Code No.	Product Type	Size
SLC9A1 (poly)	BMP023	Primary Antibody	100 µL
SLC1A7 (poly)	BMP024	Primary Antibody	50 µL
SLC2A11 (poly)	BMP025	Primary Antibody	50 µL
SLC2A13 (poly)	BMP026	Primary Antibody	50 µL
SLC2A9 (poly)	BMP027	Primary Antibody	50 µL
SLC1A4/ASCT1 polyclonal antibody	BMP028	Primary Antibody	50 µg
SLC6A2/NET polyclonal antibody	BMP029	Primary Antibody	50 µg
SLC16A2 polyclonal antibody	BMP031	Primary Antibody	50 µL
SLC11A1 polyclonal antibody	BMP032	Primary Antibody	50 µL
SLC40A1	BMP033	Primary Antibody	50 µL
SLC2A5/GLUT5 polyclonal antibody	BMP034	Primary Antibody	50 µL
SLC2A8/GLUT8 polyclonal antibody	BMP035	Primary Antibody	50 µL
SLC5A11/SMIT2 polyclonal antibody	BMP037	Primary Antibody	50 µL
SLC7A1 polyclonal antibody	BMP039	Primary Antibody	50 µL
SLC7A3 polyclonal antibody	BMP040	Primary Antibody	50 µL
SLC7A8 polyclonal antibody	BMP041	Primary Antibody	50 µL
SLC7A14	BMP042	Primary Antibody	50 µL
SLC6A4/SERT	BMP045	Primary Antibody	50 µL
SLC6A6/TUAT	BMP046	Primary Antibody	50 µL
SLC6A8/CRTR	BMP047	Primary Antibody	50 µL
SLC18A3/VACHT	BMP048	Primary Antibody	50 µL
SLC9A6/NHE6	BMP049	Primary Antibody	50 µL
SLC6A15	BMP050	Primary Antibody	50 µL



## Molecular Biology/ Genetics Related Products

Principle of RIP-Assay Kit



Product Name	Code No.	Product Type	Size
EIF4E Antibody, RIP-grade	RN001P	Primary Antibody	200 mL
EIF4G1 Antibody, RIP-grade	RN002P	Primary Antibody	200 mL
EIF4G2 Antibody, RIP-grade	RN003P	Primary Antibody	200 mL
ELAVL1/HuR Antibody, RIP-grade	RN004P	Primary Antibody	200 mL
ELAVL2/HuB Antibody, RIP-grade	RN005P	Primary Antibody	200 mL
ELAVL3/HuC Antibody, RIP-grade	RN006P	Primary Antibody	200 mL
IGF2BP1/IMP1 Antibody, RIP-grade	RN007P	Primary Antibody	200 mL
IGF2BP2/IMP2 Antibody, RIP-grade	RN008P	Primary Antibody	200 mL
IGF2BP3/IMP3 Antibody, RIP-grade	RN009P	Primary Antibody	200 mL
MSI1/Musashi1 Antibody, RIP-grade	RN010P	Primary Antibody	200 mL
PTBP1 Antibody, RIP-grade	RN011P	Primary Antibody	200 mL
STAU1 Antibody, RIP-grade	RN012P	Primary Antibody	200 mL
STAU2 Antibody, RIP-grade	RN013P	Primary Antibody	200 mL
TIA1 Antibody, RIP-grade	RN014P	Primary Antibody	200 mL
YBX1 Antibody, RIP-grade	RN015P	Primary Antibody	200 mL
RiboCluster Profiler RIP-Assay Kit	RN1001	Kit	10 assays