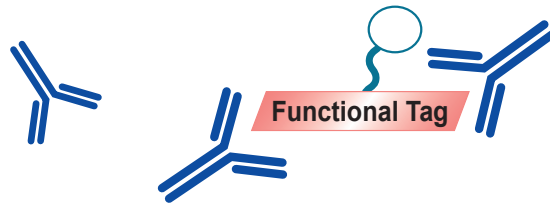




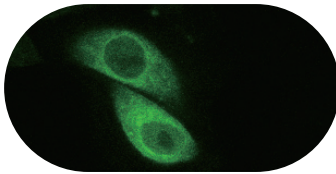
# Epitope Tag

Tag Antibodies and Kits

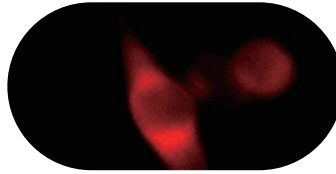


## Myc-Tag Antibodies

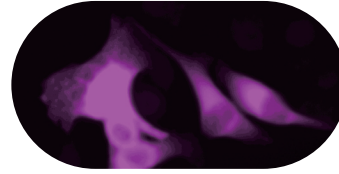
Alexa Fluor<sup>®</sup> labeled antibodies



Alexa Fluor<sup>®</sup> 488 labeled



Alexa Fluor<sup>®</sup> 594 labeled



Alexa Fluor<sup>®</sup> 647 labeled



GFP .....	1-2	T7-Tag .....	8	Gene expression (CycLex) .....	11
RFP .....	3	VSV-G-Tag .....	8	Adenovirus Hexon, Baculovirus envelope gp64	
HA-Tag .....	4	GST .....	8-9	Protein Purification Kits .....	12-13
His-Tag .....	4-5	Luciferase .....	9	Myc tagged, His tagged, V5 tagged	
Myc-Tag .....	6	b-galactosidase .....	10	Fluorescent protein (Amalgaam) .....	14
DDDDK-Tag .....	7	MBP .....	10	Azami-Green, Dronpa-Green, Kaede, Kikume-red	
V5-Tag .....	7	Thioredoxin .....	11	Kikume Green-red, Kusabira-Orange, Midoriishi-Cyan	
S-Tag .....	7	CBD .....	11	monomeric Kusabira-Green	
				Isotype control .....	15



# Epitope Tags

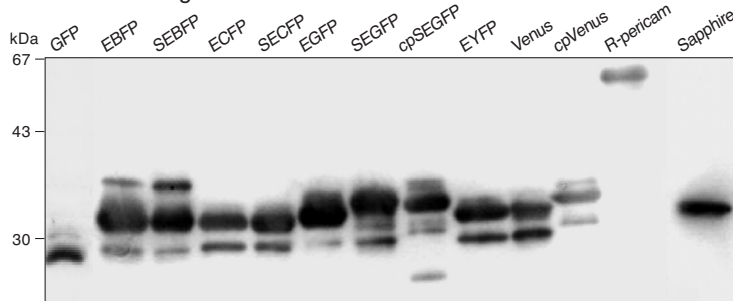
## GFP (Green Fluorescent Protein)

Code No.	Product	Clone	Isotype	Quantity	Application
598	anti-GFP	polyclonal	rabbit IgG	100 µL	WB, IP, IC, IH

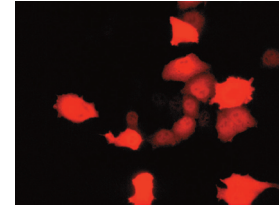
Application: WB: 1:1000-1:5000  
 IP: 1 µL/sample  
 IC: 1:500  
 IH: 1:1000-1:2000

Reactivity: This antibody reacts with GFP, EBFP, SEBFP, ECFP, SECFP, EGFP, SEGFP, cpSEGFP, EYFP, Venus, cpVenus, R-pericam, Sapphire.

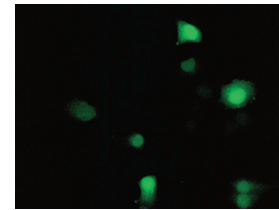
### Western blotting



### Immunocytochemistry



Anti-GFP (598)



GFP own fluorescence

GFP expressed in BHK21 cells

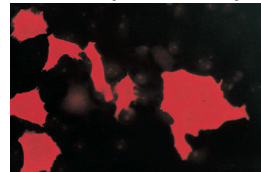
Photos were provided by Dr. Futoshi Shibasaki, Tokyo Metropolitan Institute of Medical Science

Code No.	Product	Clone	Isotype	Quantity	Application
M048-3	anti-GFP	1E4	mouse IgG2b	100 µg	WB, IP, IC, IH

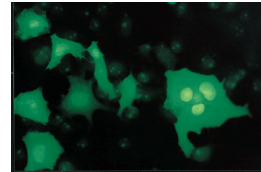
Application: WB: 1 µg/mL  
 IP: 5 µg/sample  
 IC: 2 µg/mL  
 IH: 10 µg/mL

Reactivity: This antibody reacts with GFP, EBFP, SEBFP, ECFP, SECFP, EGFP, SEGFP, cpSEGFP, EYFP, Venus, cpVenus, R-pericam, Sapphire.

### Immunocytochemistry

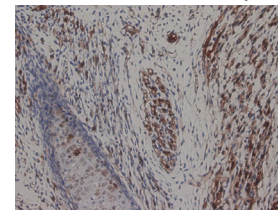


Anti-GFP (M048-3)  
Secondary Ab: Rhodamine-mouse IgG



GFP own fluorescence

### Immunohistochemistry



GFP mouse

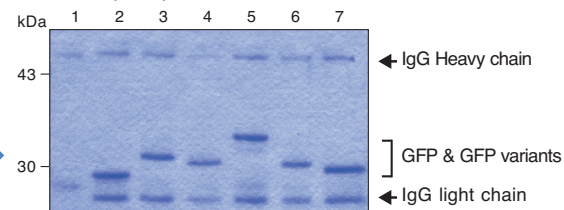
Code No.	Product	Clone	Isotype	Quantity	Application
D153-3	anti-GFP	RQ2	rat IgG2a	100 µg	IP
D153-8	anti-GFP-Agarose			400 µL	IP

Application: IP: 0.5-2 µg/sample (D153-3)  
 20 µL/sample (D153-8)

Reactivity: This antibody reacts with GFP, EBFP, ECFP, EGFP, Venus, Sapphire.

Can be used for immunoprecipitation. >>>

### Immunoprecipitation



Lane 1: GFP  
 Lane 2: GFP  
 Lane 3: EBFP  
 Lane 4: ECFP  
 Lane 5: EGFP  
 Lane 6: Venus  
 Lane 7: Sapphire

antibody  
 Lane 1: rat IgG2a-Agarose  
 Lane 2-7: anti-GFP-Agarose

WB: Western blotting, IP: Immunoprecipitation, FCM: Flow cytometry, IC: Immunocytochemistry, IH: Immunohistochemistry

(aff.): affinity purified



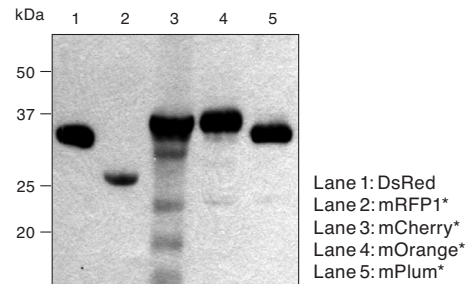
## RFP (Red Fluorescent Protein)

Code No.	Product	Clone	Isotype	Quantity	Application
PM005	anti-RFP	polyclonal	rabbit IgG	100 $\mu$ L	WB, IC

Application: WB: 1:1000  
IC: 1:500

Reactivity: This antibody reacts with DsRed, mRFP1, mCherry, mOrange, mPlum, mStrawberry, tdTomato.

### Western blotting



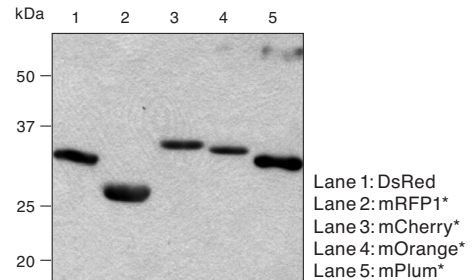
\*: Samples are provided by RIKEN.

Code No.	Product	Clone	Isotype	Quantity	Application
M155-3	anti-RFP	8D6	mouse IgG1k	100 $\mu$ g	WB, IC

Application: WB: 1  $\mu$ g/mL  
IC: 10  $\mu$ g/mL

Reactivity: This antibody reacts with DsRed, mRFP1, mCherry, mOrange, mPlum.

### Western blotting



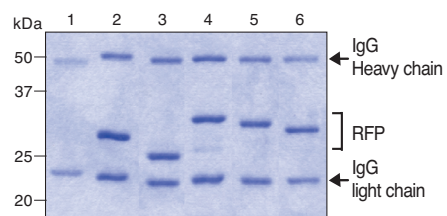
\*: Samples are provided by RIKEN.

Code No.	Product	Clone	Isotype	Quantity	Application
M165-3	anti-RFP	3G5	mouse IgG1k	100 $\mu$ g	IP
M165-8	anti-RFP-Agarose			400 $\mu$ L	IP

Application: IP: 5  $\mu$ g/sample (M165-3)  
20  $\mu$ L/sample (M165-8)

Reactivity: This antibody reacts with DsRed, mRFP1, mCherry, mOrange, mPlum.

### Immunoprecipitation



Lane 1: DsRed  
Lane 2: DsRed  
Lane 3: mRFP1\*  
Lane 4: mCherry\*  
Lane 5: mOrange\*  
Lane 6: mPlum\*

antibody  
Lane 1: mouse IgG1  
Lane 2-6: anti-RFP (M165-8)

\*: Samples are provided by RIKEN.

Can be used for Immunoprecipitation against monomeric RFP variants. >>>

### Reactivity with monomeric RFP variants

	DsRed (Tetramer)	mRFP1	mCherry	mOrange	mPlum	mStrawberry	mBanana	mRaspberry	tdTomato
PM005	+	+	+	+	+	+	N.T.	N.T.	+
M155-3	+	+	+	+	+	N.T.	N.T.	N.T.	N.T.
M165-3	+	+	+	+	+	N.T.	N.T.	N.T.	N.T.
M165-8	+	+	+	+	+	N.T.	N.T.	N.T.	N.T.

N.T. : Not tested

WB: Western blotting, IP: Immunoprecipitation, FCM: Flow cytometry, IC: Immunocytochemistry, IH: Immunohistochemistry

(aff.): affinity purified



# Epitope Tags

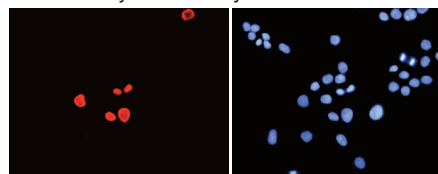
## HA-Tag

Code No.	Product	Clone	Isotype	Quantity	Application
561	anti-HA-Tag	polyclonal	rabbit IgG	100 µL	WB, IP, IC
561-5	anti-HA-Tag		rabbit IgG	500 µL	WB, IP, IC
561-8	anti-HA-Tag-Agarose		rabbit Ig(aff.)	400 µL	IP

Application: WB: 1:1000 (561, 561-5)  
 IP: 1 µL/sample (561, 561-5)  
 20 µL/sample (561-8)  
 IC: 1:200 (561, 561-5)

Reactivity: This antibody reacts with HA-Tag (YPYDVPDYA, which corresponding to the partial peptide of Human Influenza Hemagglutinin protein) fusion protein.

### ■ Immunocytochemistry

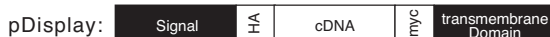


Anti-HA-Tag      Hoechst staining  
 Photos were provided by Dr. Futoshi Shibasaki, Tokyo Metropolitan Institute of Medical Science

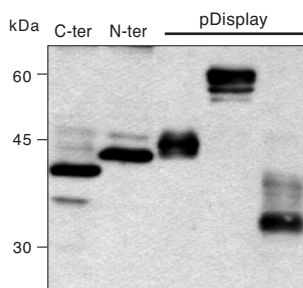
Code No.	Product	Clone	Isotype	Quantity	Application
M132-3	anti-HA-Tag	5D8	mouse IgG1	200 µg	WB, IP

Application: WB: 1 µg/mL  
 IP: 1 µg/sample

Specificity: N-ter- or C-ter-HA-Tag (YPYDVPDYA) fusion protein expressed in pDisplay



### ■ Western blotting



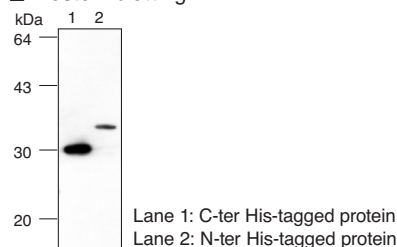
## His-Tag

Code No.	Product	Clone	Isotype	Quantity	Application
M089-3	anti-His-Tag	6C4	mouse IgG1	100 µg	WB

Application: WB: 1 µg/mL  
 Specificity: N-ter- or C-ter- 6xHis-tagged fusion protein

Reacts with the N- and C-terminal His-tagged proteins. >>>

### ■ Western blotting



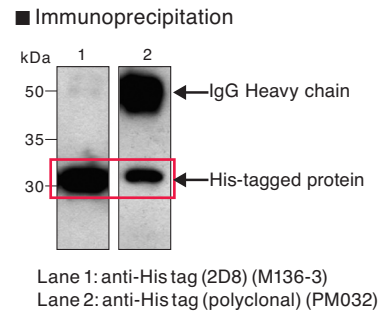


## His-Tag

Code No.	Product	Clone	Isotype	Quantity	Application
M136-3	anti-His-Tag	2D8	mouse IgG2b	100 µg	IP

Application: IP: 0.5-2 µg/sample  
 Specificity: N-ter- or C-ter- 6xHis-tagged protein

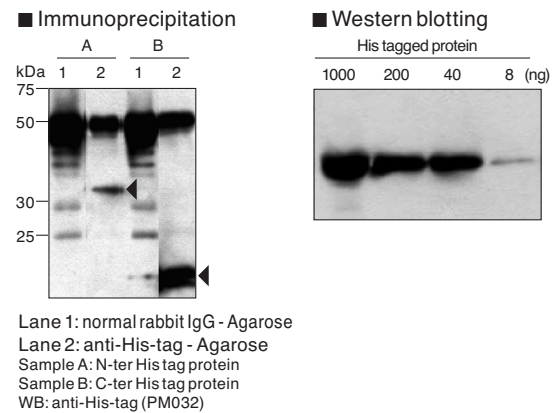
Superior immunoprecipitation >>>



Code No.	Product	Clone	Isotype	Quantity	Application
PM032	anti-His-Tag	polyclonal	rabbit Ig(aff.)	100 µL	WB, IP
PM032-8	anti-His-Tag-Agarose			400 µL	IP

Application: WB: 1:1000 (PM032)  
 IP: 5 µL/sample (PM032)  
 20 µL (PM032-8)  
 Specificity: N-ter- or C-ter- 6 x His-tagged protein

Reacts with the N- and C-terminal His-tagged proteins. >>>





# Epitope Tags

## Myc-Tag

Code No.	Product	Clone	Isotype	Quantity	Application
M047-3	anti-Myc-Tag	PL14	mouse IgG1	200 µg	WB, IP, IC
M047-6	anti-Myc-Tag-Biotin			100 µL	WB, IC
M047-7	anti-Myc-Tag-HRP			100 µL	WB, IC
M047-8	anti-Myc-Tag-Agarose			400 µL	IP
M047-A48	anti-Myc-tag-Alexa Fluor® 488			100 µg	FCM, IC
M047-A59	anti-Myc-tag-Alexa Fluor® 594			100 µg	IC
M047-A64	anti-Myc-tag-Alexa Fluor® 647			100 µg	FCM, IC

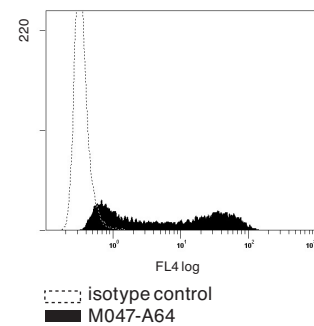
Application: WB: 1 µg/mL (M047-3) 1:1000 (M047-6) 1:500 (M047-7)  
 IP: 5 µg/sample (M047-3) 20 µL/sample (M047-8)  
 IC: 2 µg/mL (M047-3) 1:100 (M047-6, M047-7) 5 µg/mL (M047-A48, M047-A59) 10 µg/mL (M047-A64)  
 FCM: 10 µg/mL (final concentration)(M047-A48) 5 µg/mL (final concentration)(M047-A64)

Specificity: Myc-Tag (EQKLISEEDL, the peptide sequence derived from c-Myc protein) fusion protein

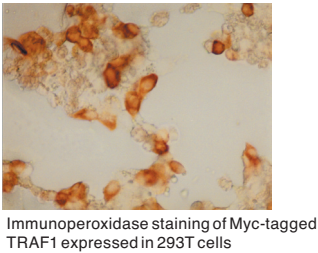
### Immunocytochemistry (Alexa Fluor®)



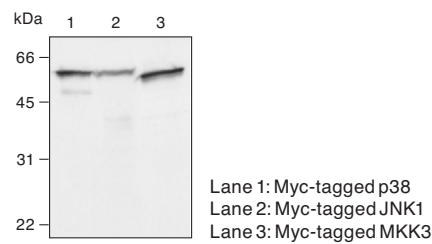
### Flowcytometry (M047-A64)



### Immunocytochemistry (M047-7)



### Western blotting (M047-3)

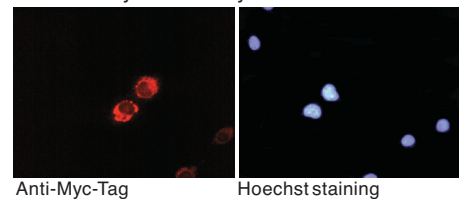


Code No.	Product	Clone	Isotype	Quantity	Application
562	anti-Myc-Tag	polyclonal	rabbit IgG	100 µL	WB, IP, IC
562-5	anti-Myc-Tag			500 µL	WB, IP, IC

Application: WB: 1:1000  
 IP: 2 µL/sample  
 IC: 1:250

Specificity: Myc-Tag (EQKLISEEDL, the peptide sequence derived from c-Myc protein) fusion protein

### Immunocytochemistry



Photos were provided by Dr. Futoshi Shibasaki, Tokyo Metropolitan Institute of Medical Science



## DDDDK-Tag

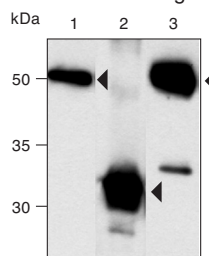
Code No.	Product	Clone	Isotype	Quantity	Application
PM020	anti-DDDDK-Tag	polyclonal	rabbit Ig(aff.)	100 µL	WB, IP, IC
PM020-8	anti-DDDDK-Tag-Agarose			400 µL	IP

Application: WB: 1:1000 (PM020)  
 IP: 5 µL/sample (PM020)  
 20 µL/sample (PM020-8)  
 IC: 1:100 (PM020)

Specificity: N-ter-, Internal, or C-ter-XXXDDDDK tagged protein

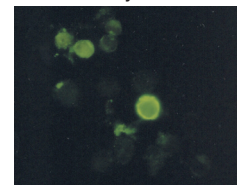
Reacts with the N-terminal, Internal, and C-terminal His-tagged proteins.

### Western blotting



Lane 1: N-ter DDDDK-tagged protein  
 Lane 2: Internal DDDDK-tagged protein  
 Lane 3: C-ter DDDDK-tagged protein in transfectant

### Immunocytochemistry



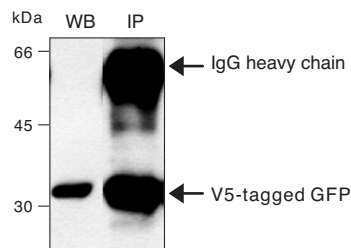
MFGE8-DDDDK-Tag expressed in 293T cells

## V5-Tag

Code No.	Product	Clone	Isotype	Quantity	Application
PM003	anti-V5-Tag	polyclonal	rabbit Ig(aff.)	100 µL	WB, IP
PM003-8	anti-V5-Tag-Agarose			400 µL	IP

Application: WB: 1:2000 (PM003)  
 IP: 5 µL/sample (PM003)  
 20 µL/sample (PM003-8)

Specificity: V5-Tag (GKPIPPLLGLDST, the peptide sequence derived from Simian Virus 5 protein) fusion protein

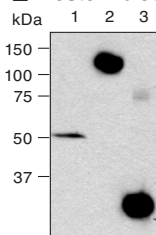


Code No.	Product	Clone	Isotype	Quantity	Application
M167-3	anti-V5-Tag	1H6	mouse IgG2ak	100 µg	WB, IP, IC

Application: WB: 1 µg/mL  
 IP: 5 µg/sample  
 IC: 5 µg/mL

Specificity: N-ter- or C-ter-V5-Tag (GKPIPPLLGLDST, the peptide sequence derived from Simian Virus 5 protein) fusion protein

### Western blotting



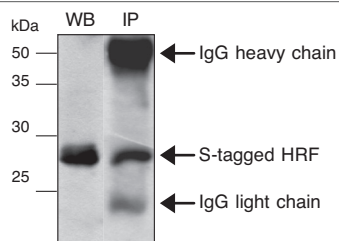
Lane1: C-ter V5 tagged Foxp3 transfectant  
 Lane2: C-ter V5 tagged TPO  
 Lane3: N-ter V5 tagged GFP

## S-Tag

Code No.	Product	Clone	Isotype	Quantity	Application
PM021	anti-S-Tag	polyclonal	rabbit Ig(aff.)	100 µL	WB, IP
PM021-8	anti-S-Tag-Agarose			400 µL	IP

Application: WB: 1:1000 (PM021)  
 IP: 5 µL/sample (PM021)  
 20 µL/sample (PM021-8)

Specificity: S-Tag (KETAAAKFERQHIDS, the peptide sequence derived from Pancreatic RNase A protein) fusion protein



WB: Western blotting, IP: Immunoprecipitation, FCM: Flow cytometry, IC: Immunocytochemistry, IH: Immunohistochemistry

(aff.): affinity purified



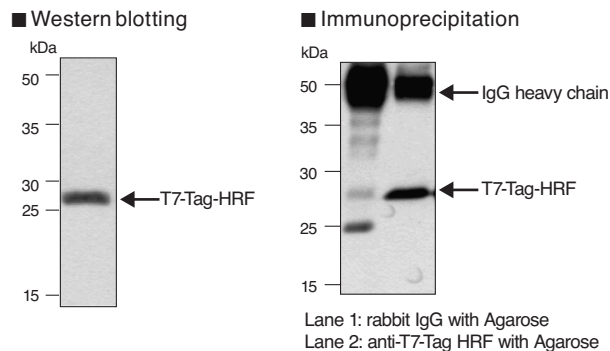
# Epitope Tags

## T7-Tag

Code No.	Product	Clone	Isotype	Quantity	Application
PM022	anti-T7-Tag	polyclonal	rabbit Ig(aff.)	100 µL	WB, IP
PM022-8	anti-T7-Tag-Agarose			400 µL	IP

Application: WB: 1:1000 (PM022)  
 IP: 5 µL/sample (PM022)  
 20 µL/sample (PM022-8)

Specificity: T7-Tag (MASMTGGQQMG, the peptide sequence derived from capsid protein of T7 bacteriophage) fusion protein

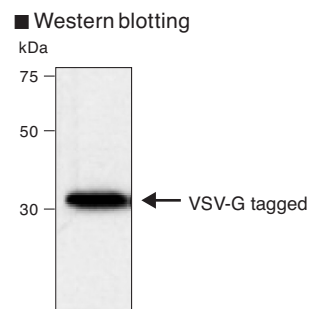


## VSV-G-Tag

Code No.	Product	Clone	Isotype	Quantity	Application
563	anti-VSV-G-Tag	polyclonal	rabbit IgG	100 µL	WB, IC
563-8	anti-VSV-G-Tag-Agarose		rabbit Ig(aff.)	400 µL	IP

Application: WB: 1:100 (563)  
 IP: 20 µL/sample (563-8)  
 IC: 1:100 (563)

Specificity: VSV-G-Tag (the peptide, YTDIEMNRLGK) fusion protein

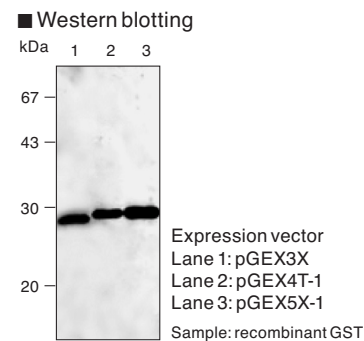


## GST (Glutathione-S-transferase)

Code No.	Product	Clone	Isotype	Quantity	Application
M071-3	anti-GST	3B2	mouse IgG2b	100 µg	WB, IP
M071-7	anti-GST-HRP			100 µL	WB

Application: WB: 1 µg/mL (M071-3)  
 1:1000 (M071-7)  
 IP: 5 µg/sample (M071-3)

Specificity: GST fusion protein



WB: Western blotting, IP: Immunoprecipitation, FCM: Flow cytometry, IC: Immunocytochemistry, IH: Immunohistochemistry

(aff.): affinity purified

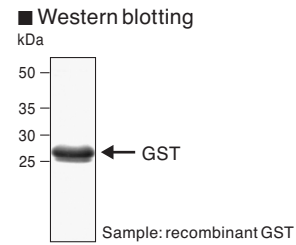




## GST (Glutathione-S-transferase)

Code No.	Product	Clone	Isotype	Quantity	Application
PM013	anti-GST	polyclonal	rabbit IgG	100 µL	WB, IP

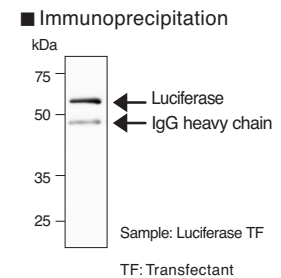
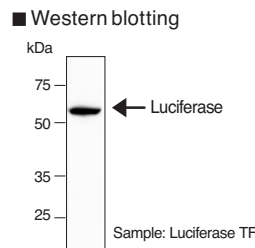
Application: WB: 1:1000  
 IP: 5 µL/sample  
 Specificity: GST fusion protein



## Luciferase

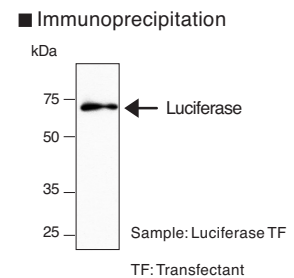
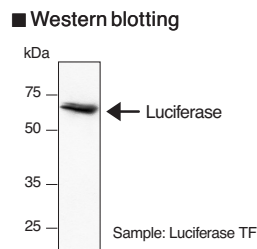
Code No.	Product	Clone	Isotype	Quantity	Application
M095-3	anti-Luciferase	2D4	mouse IgG1	100 µg	WB, IP

Application: WB: 1 µg/mL  
 IP: 5 µg/sample  
 Reactivity: This antibody reacts with the firefly Luciferase, not with the renilla Luciferase.



Code No.	Product	Clone	Isotype	Quantity	Application
PM016	anti-Luciferase	polyclonal	rabbit IgG	100 µL	WB, IP, IC, IH

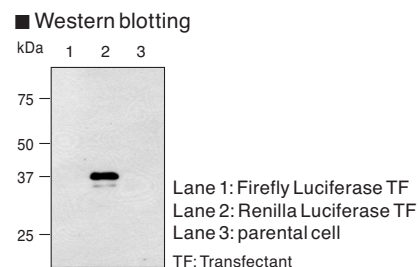
Application: WB: 1:1000  
 IP: 5 µL/sample  
 IC: 1:200  
 IH: 1:100  
 Reactivity: This antibody reacts with the firefly Luciferase, not with the renilla Luciferase.



## Renilla Luciferase

Code No.	Product	Clone	Isotype	Quantity	Application
PM047	anti-Renilla Luciferase	polyclonal	rabbit Ig(aff.)	100 µL	WB, IP, IC

Application: WB: 1:1000  
 IP: 2 µL/250 µL of cell extract from 5x10<sup>6</sup> cell  
 IC: 1:100-1:200  
 paraffin section: 1:1000  
 (Heat treatment is necessary for paraffin embedded sections.)  
 Reactivity: This antibody reacts with the renilla Luciferase, not with the firefly Luciferase.





# Epitope Tags

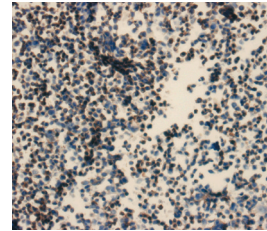
## β-galactosidase

Code No.	Product	Clone	Isotype	Quantity	Application
M094-3	anti-β-galactosidase	5A3	mouse IgG1	100 µg	WB, IP, IC, IH

Application: WB: 1 µg/mL  
 IP: 1 µg/sample  
 IC: 5 µg/mL  
 IH: 10 µg/mL

Specificity: β-galactosidase (derived from E. coli) fusion protein

### ■ Immunohistochemistry



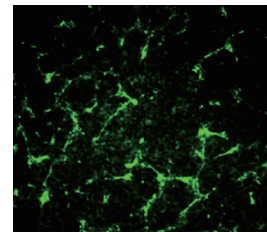
Immunoperoxidase staining of β-galactosidase expressed in 293T cells

Code No.	Product	Clone	Isotype	Quantity	Application
PM049	anti-β-galactosidase	polyclonal	Rabbit IgG	100 µL	WB, IP, IC, IH

Application: WB: 1:1000  
 IP: 1 µL/sample  
 IC: 1:100  
 IH: 1:200

Specificity: β-galactosidase (derived from E. coli) fusion protein

### ■ Immunohistochemistry (frozen section)



Lewis lung carcinoma xenograft  
 This data was provided by Dr. Minami Ph.D.  
 (Laboratory for Systems Biology and Medicine at RCAST, University of Tokyo)

Can be used for mouse immunohistochemistry.



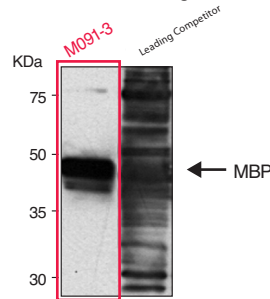
## MBP (Maltose Binding Protein)

Code No.	Product	Clone	Isotype	Quantity	Application
M091-3	anti-MBP	1G12	mouse IgG3	100 µg	WB, IP

Application: WB: 1 µg/mL  
 IP: 2 µg/sample

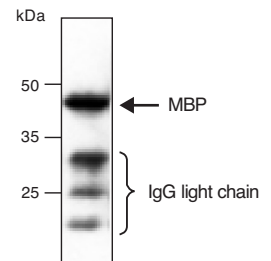
Specificity: MBP (derived from E. coli) fusion protein

### ■ Western blotting



Sample: recombinant MBP

### ■ Immunoprecipitation



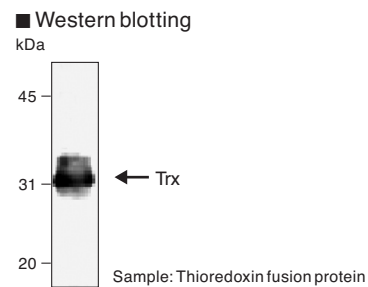
Sample: recombinant MBP



## Trx (Thioredoxin)

Code No.	Product	Clone	Isotype	Quantity	Application
M013-3	anti-Trx-Tag	2C9	mouse IgG1κ	100 µg	WB

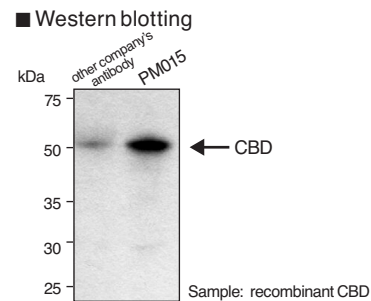
Application: WB: 1 µg/mL  
 Specificity: E. coli Trx and Trx-Tag fusion protein



## CBD (Chitin Binding Domain)

Code No.	Product	Clone	Isotype	Quantity	Application
PM015	anti-Chitin Binding Domain	polyclonal	rabbit IgG	100 µL	WB

Application: WB: 1:1000  
 Specificity: CBD (TTNPGVSAWQVNTAYTAGQLVIYNGKTYK) fusion protein



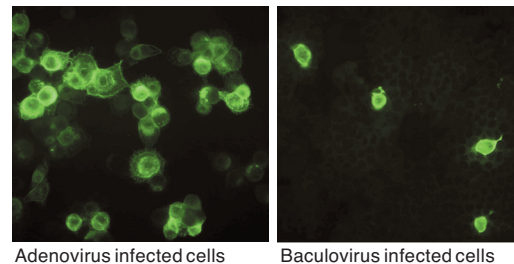
## Antibodies to detect gene expression



Code No.	Product	Clone	Isotype	Quantity	Application
CY-M1027	anti-Adenovirus Hexon	AF-3H12	mouse IgG2a	50 µg	FCM, IC, IF, ELISA
CY-M1026	anti-Baculovirus envelope gp64	AF-2C8	mouse IgG2a	50 µg	FCM, IC, IF, ELISA

The limitations of adenovirus or baculovirus expression vector systems include time-consuming and tedious procedures for selection and propagation of the virus and titer determination. Accurate titration of viral stocks are important to ensure consistency between samples and to achieve the required level of transient expression. Knowledge of infectious particle titers important for successful virus production. These antibodies can be used to determine viral titers by immunofluorescence.

■ Immunocytochemistry





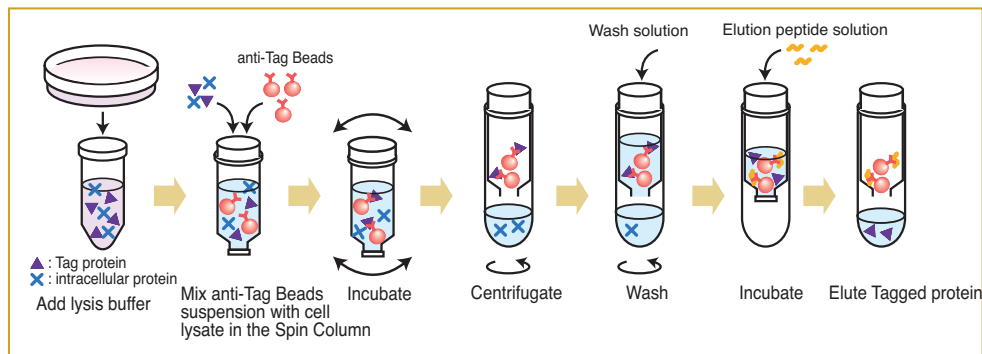
# Epitope Tags

## Protein Purification Kit

MBL's tagged Protein Purification kits are designed for the isolation of His, c-Myc and V5 tagged proteins from cell culture supernatants. MBL has developed the His, c-Myc, and V5 tagged Beads to purify the tagged proteins quickly and efficiently. The purification kit have been optimized to maintain protein activity and conformity.

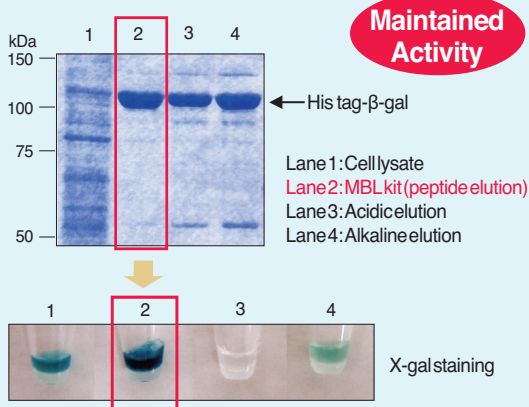
MBL has optimized the affinity of the anti-Tag antibody to permit high yields and efficient purification of functional tagged proteins. The 'His-tagged Protein Purification Kit,' 'V5 tagged Protein Purification kit,' and 'c-Myc-tagged Protein Mild Purification Kit' developed by MBL are simple and fast, because the kit protocols have been optimized by using a spin column.

### ■ Procedure Summary

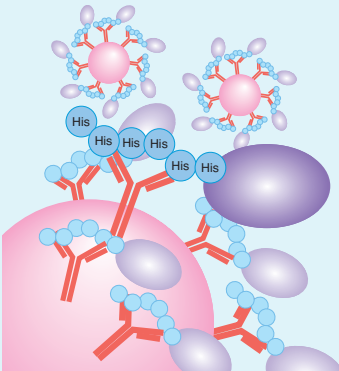
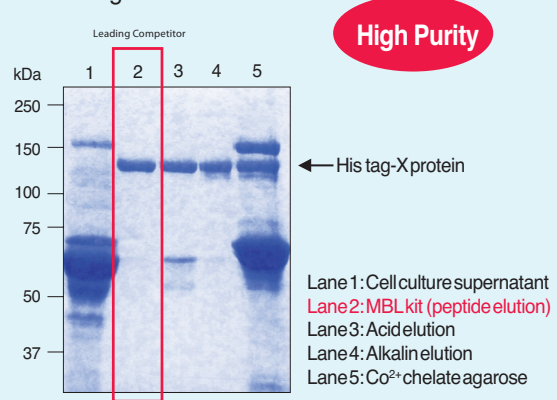


## His-tagged Protein Purification Kit

### ■ Protein activity of the purified proteins



### ■ Purification from cell culture supernatant containing serum



This kit is designed for the isolation of His tagged protein from cell culture supernatants containing serum and cell lysate under neutral pH condition.

As the beads in this kit can be used at neutral pH, the purified proteins maintain the activity and conformation.



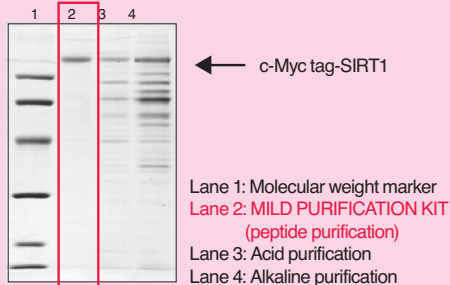
## c-Myc fusion protein purification kit

The kit uses a high-affinity anti-c-Myc-tag antibody, which is perfectly suited for purification.

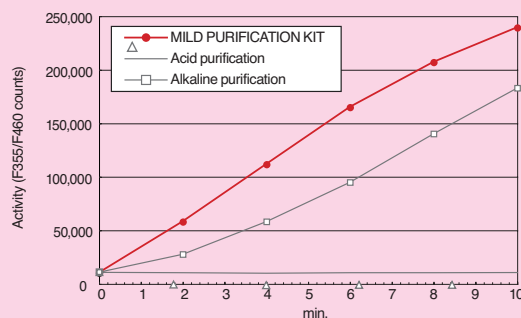
### Example of Purification Results

The purification rate purified with MBL MILD PURIFICATION KIT is more than 95%, but the rates purified in acidic or basic condition were not more than 60%.

< Purification of c-Myc tag-SIRT1/Sir2 Deacetylase >

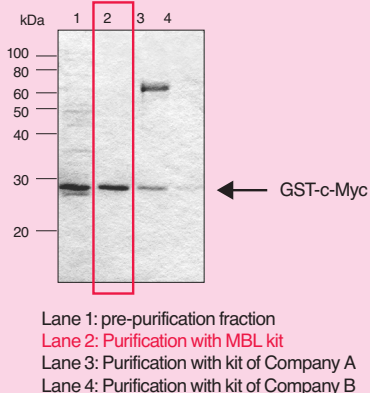


### Protein Activity

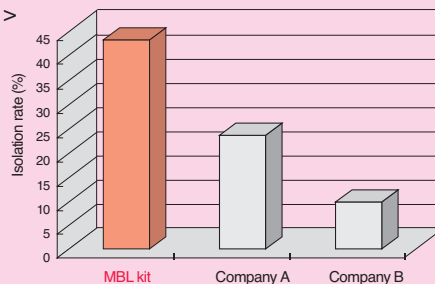


### Comparison with the other companies' products

< Purification rate >



< Isolation rate >



	MBL kit	Company A	Company B
Input (ng)	3,600	3,600	3,600
Isolated amount (ng)	1,544	840	356
Isolation rate (%)	43%	23%	10%
Purification rate (%)	95% $\geq$	$\leq$ 50%	--

## Protein Purification Kit

Code No.	Product	Quantity
3305	c-Myc tagged Protein MILD PURIFICATION KIT Ver.2	20 tests
3305A	c-Myc tagged Protein MILD PURIFICATION KIT Ver.2 (Trial Kit)	2 tests
3310	His tagged Protein PURIFICATION KIT	20 tests
3310A	His tagged Protein PURIFICATION KIT (Trial Kit)	2 tests
3315	V5 tagged Protein PURIFICATION KIT	20 tests
3315A	V5 tagged Protein PURIFICATION KIT (Trial Kit)	2 tests

Components: mini columns set, wash concentrate, anti-Tag antibody Beads, and elution peptide

## Gel and Elution Peptide for Protein Purification

Code No.	Product	Quantity
3306	c-Myc tagged Protein MILD PURIFICATION GEL	gel 1mL, peptide
3307	c-Myc tagged Protein MILD PURIFICATION GEL	gel 1mL x 5, peptide x 5
3300-205	c-Myc tag peptide (EQKLISEEDL)	1 mg x 5
3311	His tagged Protein PURIFICATION GEL	gel 1mL, peptide
3312	His tagged Protein PURIFICATION GEL	gel 1mL x 5, peptide x 5
3310-205	His tag Peptide	2 mg x 5

WB: Western blotting, IP: Immunoprecipitation, FCM: Flow cytometry, IC: Immunocytochemistry, IH: Immunohistochemistry

(aff.): affinity purified



## Fluorescent Protein Antibodies

Code No.	Product	Clone	Isotype	Quantity	Application
M102-3	anti-Azami-Green	2F11	mouse IgG1k	100 µg	WB
M103-3	anti-Azami-Green	3D10	mouse IgG2ak	100 µg	IP
PM011	anti-Azami-Green	polyclonal	rabbit IgG	100 µL	WB
M117-3	anti-Dronpa-Green	4D12	mouse IgG2a	100 µg	WB
M118-3	anti-Dronpa-Green	2F6	mouse IgG2b	100 µg	IP
M106-3	anti-Kaede	2F4	mouse IgG1k	100 µg	IP
M125-3	anti-Kaede	3B1	mouse IgG1	100 µg	WB
PM012	anti-Kaede	polyclonal	rabbit IgG	100 µL	WB
M126-3	anti-Keima-Red	2F7	mouse IgG2a	100 µg	WB
M127-3	anti-Keima-Red	3C9	mouse IgG1	100 µg	IP
M128-3	anti-Kikume Green-Red	5B3	mouse IgG2b	100 µg	WB
M129-3	anti-Kikume Green-Red	2D3	mouse IgG2b	100 µg	IP
M104-3	anti-Kusabira-Orange	1H7	mouse IgG1k	100 µg	WB
M105-3	anti-Kusabira-Orange	2G9	mouse IgG1k	100 µg	IP
M116-3	anti-Midoriishi-Cyan	2C1	mouse IgG2b	100 µg	IP
M130-3	anti-Midoriishi-Cyan	5B7	mouse IgG1	100 µg	WB
M148-3	anti-monomeric Kusabira-Green N-terminal fragment	1E6	mouse IgG2b	100 µg	WB
M149-3	anti-monomeric Kusabira-Green C-terminal fragment	21B10	mouse IgG2a	100 µg	WB
PM052	Monomeric Azami-Green 1	polyclonal	rabbit Ig(aff.)	100 µL	WB,IP,IC,IH
M168-3	Monomeric Kusabira-Orange 2	3B3	mouse IgG1k	100 µg	WB,IP,IC,IH
PM051	Monomeric Kusabira-Orange 2	polyclonal	rabbit Ig(aff.)	100 µL	WB,IP,IC,IH

These products were co-developed with the Laboratory for Cell Function and Dynamics, the Advanced Technology Development Group, the Brain Science Institute, and the Institute of Physical and Chemical Research (RIKEN) (lab head Dr. Atsushi Miyawaki).

## Agarose conjugated Antibodies for Immunoprecipitation.

### Agarose conjugated Tag antibodies

Code No.	Product	Clone	Isotype	Quantity
D153-8	anti-GFP-Agarose	RQ2	rat IgG2a	400 µL
M165-8	anti-RFP-Agarose	3G5	mouse IgG1k	400 µL
561-8	anti-HA-Tag-Agarose	polyclonal	rabbit Ig(aff.)	400 µL
563-8	anti-VSV-G-Tag-Agarose	polyclonal	rabbit Ig(aff.)	400 µL
M047-8	anti-Myc-Tag-Agarose	PL14	mouse IgG1	400 µL
PM003-8	anti-V5-Tag-Agarose	polyclonal	rabbit Ig(aff.)	400 µL
PM020-8	anti-DDDDK-Tag-Agarose	polyclonal	rabbit Ig(aff.)	400 µL
PM021-8	anti-S-Tag-Agarose	polyclonal	rabbit Ig(aff.)	400 µL
PM022-8	anti-T7-Tag-Agarose	polyclonal	rabbit Ig(aff.)	400 µL
PM032-8	anti-His-Tag-Agarose	polyclonal	rabbit Ig(aff.)	400 µL

WB: Western blotting, IP: Immunoprecipitation, FCM: Flow cytometry, IC: Immunocytochemistry, IH: Immunohistochemistry

(aff.): affinity purified



## Agarose conjugated Isotype Control

Code No.	Product	Clone	Isotype	Quantity
M075-8	Mouse IgG1-Agarose	2E12	mouse IgG1	400 µL
M081-8	Rat IgG2a-Agarose	2H3	rat IgG2a	400 µL
PM035-8	Normal Rabbit IgG-Agarose	polyclonal	rabbit IgG	400 µL

## Isotype Control Antibodies for FCM

Code No.	Product	Clone	Isotype	Quantity
M075-3	Mouse IgG1	2E12	mouse IgG1	100 µg
M075-4	Mouse IgG1-FITC	2E12	mouse IgG1k	1 mL
M075-5	Mouse IgG1-PE	2E12	mouse IgG1k	1 mL
M075-A48	Mouse IgG1-Alexa Fluor <sup>®</sup> 488	2E12	mouse IgG1k	100 µg
M075-A64	Mouse IgG1-Alexa Fluor <sup>®</sup> 647	2E12	mouse IgG1k	100 µg
M076-3	Mouse IgG2a	6H3	mouse IgG2a	100 µg
M076-4	Mouse IgG2a-FITC	6H3	mouse IgG2ak	1 mL
M076-5	Mouse IgG2a-PE	6H3	mouse IgG2ak	1 mL
M076-A48	Mouse IgG2a-Alexa Fluor <sup>®</sup> 488	6H3	mouse IgG2a	100 µg
M076-A64	Mouse IgG2a-Alexa Fluor <sup>®</sup> 647	6H3	mouse IgG2a	100 µg
M077-3	Mouse IgG2b	3D12	mouse IgG2b	100 µg
M077-4	Mouse IgG2b-FITC	3D12	mouse IgG2bk	1 mL
M077-5	Mouse IgG2b-PE	3D12	mouse IgG2bk	1 mL
M077-A48	Mouse IgG2b-Alexa Fluor <sup>®</sup> 488	3D12	mouse IgG2b	100 µg
M077-A64	Mouse IgG2b-Alexa Fluor <sup>®</sup> 647	3D12	mouse IgG2b	100 µg
M078-3	Mouse IgG3	6A3	mouse IgG3	100 µg
M078-4	Mouse IgG3-FITC	6A3	mouse IgG3	500 µg
M079-3	Mouse IgM	7E10	mouse IgM	100 µg
M080-3	Rat IgG1	1H5	rat IgG1	100 µg
M080-4	Rat IgG1-FITC	1H5	rat IgG1	50 µg
M080-5	Rat IgG1-PE	1H5	rat IgG1	1 mL
M081-3	Rat IgG2a	2H3	rat IgG2a	100 µg
M081-4	Rat IgG2a-FITC	2H3	rat IgG2a	50 µg
M081-5	Rat IgG2a-PE	2H3	rat IgG2a	1 mL
M082-3	Rat IgG2c	6E12	rat IgG2c	100 µg
M082-4	Rat IgG2c-FITC	6E12	rat IgG2c	50 µg
M090-3	Rat IgG2b	3G8	rat IgG2b	100 µg
M090-4	Rat IgG2b-FITC	3G8	rat IgG2b	1 mL

# Tag Antibody Product List

Code No.	Product	Clone	Isotype	Quantity	Application
<b>Fluorescent protein</b>					
598	anti-GFP	polyclonal	rabbit IgG	100 µL	WB,IP,IC,IH
M048-3	anti-GFP	1E4	mouse IgG2b	100 µg	WB,IP,IC,IH
D153-3	anti-GFP	RQ2	rat IgG2a	100 µg	IP
D153-8	anti-GFP-Agarose	RQ2	rat IgG2a	400 µL	IP
PM005	anti-RFP	polyclonal	rabbit IgG	100 µL	WB,IC
M155-3	anti-RFP	8D6	mouse IgG1k	100 µg	WB,IC
M165-3	anti-RFP	3G5	mouse IgG1k	100 µg	IP
M165-8	anti-RFP-Agarose	3G5	mouse IgG1k	400 µL	IP
<b>Epitope tag</b>					
PM015	anti-Chitin Binding Domain	polyclonal	rabbit IgG	100 µL	WB
PM020	anti-DDDDK-Tag	polyclonal	rabbit Ig(aff.)	100 µL	WB,IP,IC
PM020-8	anti-DDDDK-Tag-Agarose	polyclonal	rabbit Ig(aff.)	400 µL	IP
561	anti-HA-tag	polyclonal	rabbit IgG	100 µL	WB,IP,IC
561-5	anti-HA-tag	polyclonal	rabbit IgG	500 µL	WB,IP,IC
561-8	anti-HA-tag-Agarose	polyclonal	rabbit Ig(aff.)	400 µL	IP
M132-3	anti-HA-tag	5D8	mouse IgG1	200 µg	WB,IP
M089-3	anti-His-Tag	6C4	mouse IgG1	100 µg	WB
M136-3	anti-His-Tag	2D8	mouse IgG2b	100 µg	IP
PM032	anti-His-Tag	polyclonal	rabbit Ig(aff.)	100 µL	WB,IP
PM032-8	anti-His-Tag-Agarose	polyclonal	rabbit Ig(aff.)	400 µL	IP
M047-3	anti-Myc-Tag	PL14	mouse IgG1	200 µg	WB,IP,IC
M047-8	anti-Myc-Tag-Agarose	PL14	mouse IgG1	400 µL	IP
M047-6	anti-Myc-Tag-Biotin	PL14	mouse IgG1	100 µL	WB,IC
M047-7	anti-Myc-Tag-HRP	PL14	mouse IgG1	100 µL	WB,IC
M047-A48	anti-Myc-tag-Alexa Fluor <sup>®</sup> 488	PL14	mouse IgG1	100 µg	FCM,IC
M047-A59	anti-Myc-tag-Alexa Fluor <sup>®</sup> 594	PL14	mouse IgG1	100 µg	IC
M047-A64	anti-Myc-tag-Alexa Fluor <sup>®</sup> 647	PL14	mouse IgG1	100 µg	FCM,IC
562	anti-Myc-Tag	polyclonal	rabbit IgG	100 µL	WB,IP,IC
562-5	anti-Myc-Tag	polyclonal	rabbit IgG	500 µL	WB,IP,IC
PM021	anti-S-Tag	polyclonal	rabbit Ig(aff.)	100 µL	WB,IP
PM021-8	anti-S-Tag-Agarose	polyclonal	rabbit Ig(aff.)	400 µL	IP
PM022	anti-T7-Tag	polyclonal	rabbit Ig(aff.)	100 µL	WB,IP
PM022-8	anti-T7-Tag-Agarose	polyclonal	rabbit Ig(aff.)	400 µL	IP
M167-3	anti-V5-Tag	1H6	mouse IgG2ak	100 µg	WB,IP,IC
PM003	anti-V5-Tag	polyclonal	rabbit Ig(aff.)	100 µL	WB,IP
PM003-8	anti-V5-Tag-Agarose	polyclonal	rabbit Ig(aff.)	400 µL	IP
563	anti-VSV-G-Tag	polyclonal	rabbit IgG	100 µL	WB,IC
563-8	anti-VSV-G-Tag-Agarose	polyclonal	rabbit Ig(aff.)	400 µL	IP
<b>Fusion Protein</b>					
M071-3	anti-GST-Tag	3B2	mouse IgG2b	100 µg	WB,IP
M071-7	anti-GST-Tag-HRP	3B2	mouse IgG2b	100 µL	WB
PM013	anti-GST-Tag	polyclonal	rabbit IgG	100 µL	WB,IP
M091-3	anti-MBP (Maltose Binding Protein)	1G12	mouse IgG3	100 µg	WB,IP
M013-3	anti-Thioredoxin (Trx-Tag)	2C9	mouse IgG1k	100 µg	WB
M094-3	anti-β-galactosidase	5A3	mouse IgG1	100 µg	WB,IP,IC,IH
PM049	anti-β-galactosidase	polyclonal	rabbit IgG	100 µL	WB,IP,IC,IH
M095-3	anti-Luciferase	2D4	mouse IgG1	100 µg	WB,IP
PM016	anti-Luciferase	polyclonal	rabbit IgG	100 µL	WB,IP,IC,IH
PM047	anti-Renilla Luciferase	polyclonal	rabbit Ig(aff.)	100 µL	WB,IP,IC

WB: Western blotting, IP: Immunoprecipitation, FCM: Flow cytometry, IC: Immunocytochemistry, IH: Immunohistochemistry

(aff.): affinity purified

Alexa Fluor is a trademark of Life Technologies Corporation. The products are provided under an agreement between Life Technologies Corporation and Medical & Biological Laboratories Co. Ltd. The manufacture, use, sale, or import of these products may be subject to one or more U.S. patents, pending applications, and corresponding non-U.S. equivalents owned by or licensed to Life Technologies Corporation.

**MBL**  
International Corporation  
4 H Constitution Way  
Woburn, MA 01801, USA

Tel: (781) 939-6964  
(800) 200-5459  
Fax: (781) 939-6963

URL: <http://www.mblintl.com> email: [info@mblintl.com](mailto:info@mblintl.com)

**MBL**  
Medical & Biological Laboratories Co., LTD.  
KDX Nagoya Sakae Bldg. 10F  
4-5-3 Sakae, Naka-ku, Nagoya, Aichi  
460-0008, JAPAN  
Tel: 81-52-971-2081 Fax: 81-52-971-2337  
URL: <https://ruo.mbl.co.jp>