



AUTOPHAGY

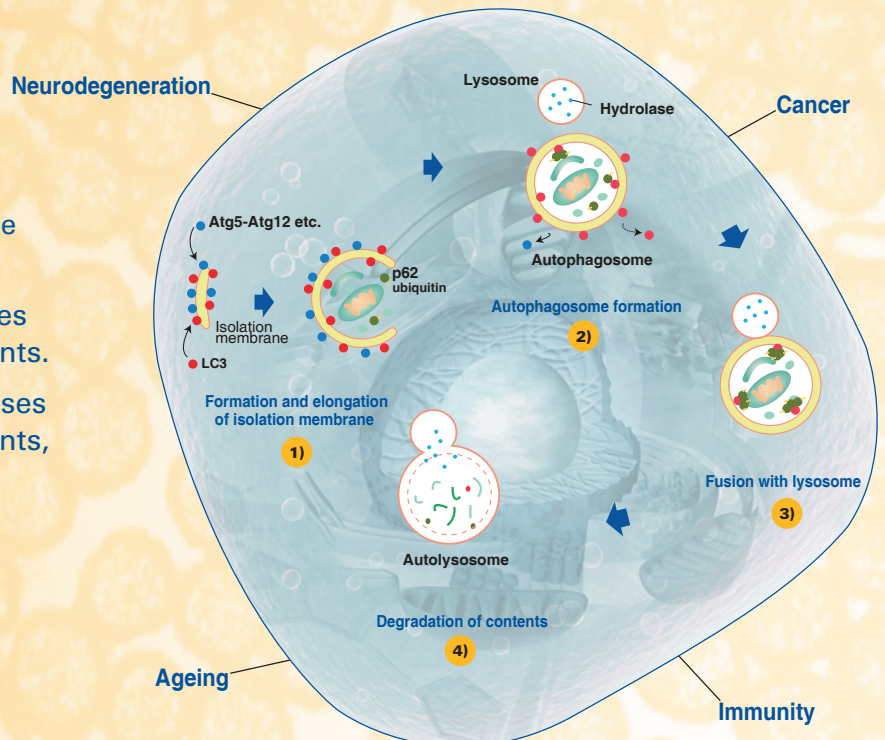
- Multiple Applications
- Validated and widely referenced
- Extensive line of autophagic targets

Autophagy and Disease

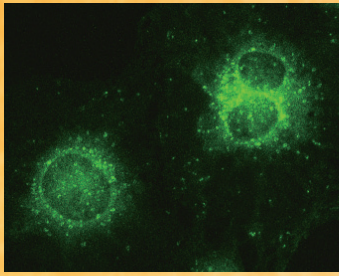
Autophagy is originally found in yeast to be cellular self-digestion for the purpose of providing nutrients to enable cells to survive starvation. Autophagy has an important role in maintaining the cell homeostasis by removing cellular components that have degraded. Recent research has also shown an association of mammalian autophagy with pathological conditions including neurodegenerative diseases, infection, cardiac disease, cancer and ageing.

Autophagy Process

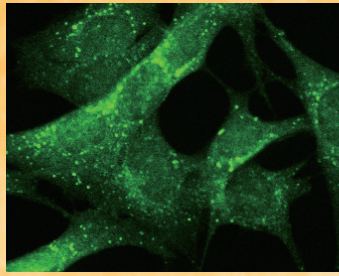
- 1) Autophagy is initiated by the formation of double membrane bound autophagosomes.
- 2) The autophagosome elongates around the cellular components.
- 3) After the autophagosome closes around the cellular components, it fuses with a lysosome (autophagolysosome).
- 3) Autophagolysosome digests the components.



● Immunocytochemistry

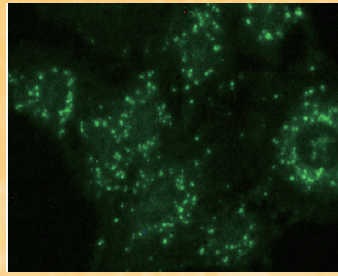


Starved NRK

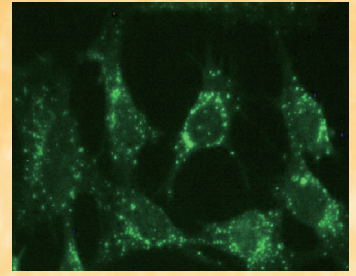


Starved MEF

Immunocytochemical detection of LC3 using catalog number PM036



Starved NRK

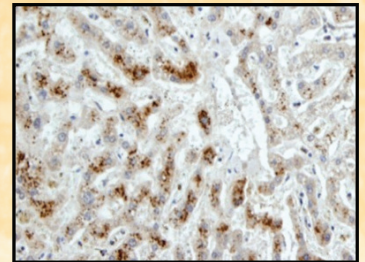


Starved MEF

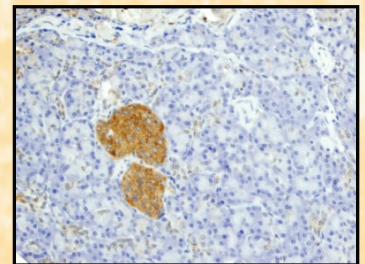
Immunocytochemical detection of LC3 using catalog number M152-3

Target	Applications					Stage			
	ICC	IHC	WB	IPP	FCM	Initiation	Elongation	Closure	Maturation/ Degradation
Atg10			x			x			
Atg12	x		x	x		x			
Atg13			x	x		x			
Atg14			x	x		x			
Atg16L	x		x	x		x			
Atg3	x		x	x		x			
Atg4B			x				x		
Atg5			x			x			
Atg7			x	x		x			
Beclin 1	x		x	x		x			x
GABARAP			x						x
GATE-16			x						x
LC3	x	x	x	x	x		x	x	x
p62	x	x	x	x	x		x		
Rubicon			x	x					x
Tel2			x	x		x			
UVRAG			x			x			

● Immunohistochemistry



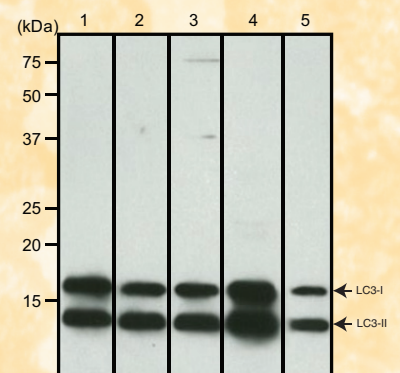
Normal Human Pancreas



Normal Human Liver

Immunohistochemical detection of LC3 using catalog number PM036

● Western Blotting



Sample: PM036-PN, 10 μ L/lane

Lane 1: Anti-LC3 pAb (Code no. PM036)
 Lane 2: Anti-LC3 pAb (Code no. PD014)
 Lane 3: Anti-LC3 pAb (Code no. PM046)
 Lane 4: Anti-LC3 mAb (8E10) (Code no. M186-3)
 Lane 5: Anti-LC3 mAb (4E12) (Code no. M152-3)