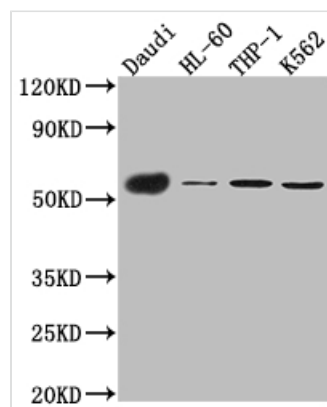




CD27 Antibody

Product Code	CSB-RA953976A0HU
Storage	Upon receipt, store at -20°C or -80°C. Avoid repeated freeze.
Uniprot No.	P26842
Immunogen	A synthesized peptide derived from human CD27
Species Reactivity	Human
Tested Applications	ELISA, WB; Recommended dilution: WB:1:500-1:5000
Relevance	Receptor for CD70/CD27L. May play a role in survival of activated T-cells. May play a role in apoptosis through association with SIVA1.
Form	Liquid
Conjugate	Non-conjugated
Storage Buffer	Rabbit IgG in phosphate buffered saline, pH 7.4, 150mM NaCl, 0.02% sodium azide and 50% glycerol.
Purification Method	Affinity-chromatography
Isotype	Rabbit IgG
Clonality	Monoclonal
Product Type	Recombinant Antibody
Immunogen Species	Homo sapiens (Human)
Research Area	Cancer; Immunology; Stem cells
Gene Names	CD27
Accession NO.	4A1

Image



Western Blot

Positive WB detected in: Daudi whole cell lysate, HL-60 whole cell lysate, THP-1 cell lysate, K562 cell lysate

All lanes: CD27 antibody at 1:1000

Secondary

Goat polyclonal to rabbit IgG at 1/50000 dilution

Predicted band size: 30 kDa

Observed band size: 55 kDa

Description

CD27 is a co-stimulatory immune-checkpoint receptor, constitutively expressed on a broad range of T-cells ($\alpha\beta$ and $\gamma\delta$), NK cells, and B-cells. Ligation of CD27 with CD70 results in potent co-stimulatory effects. Upon acute immune activation, such as infection, CD27/CD70 co-stimulation stimulates the clonal



expansion of antigen-specific T cells and is required to establish T cell memory, amongst others by promoting the survival of activated T cells. Furthermore, CD27/CD70 co-stimulation facilitates the survival of effector T cells in non-lymphoid tissues by stimulating their autocrine interleukin (IL)-2 production.

The main production processes of this recombinant CD27 antibody included immunization, B cell harvest, antibody secreting cell enrichment, single cell sequencing, antibody expression and purification. The single B cell screening platform was used for the CD27 antibody gene screening. And this CD27 antibody was tested in ELISA, WB.