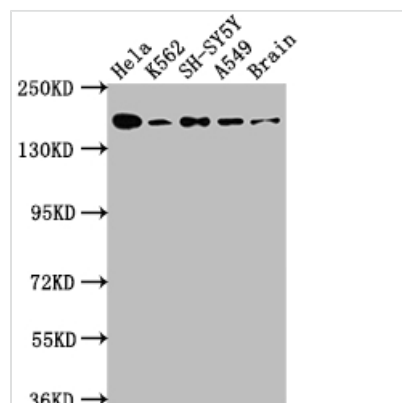




# APC Antibody

<b>Product Code</b>	CSB-RA951649A0HU
<b>Storage</b>	Upon receipt, store at -20°C or -80°C. Avoid repeated freeze.
<b>Uniprot No.</b>	P25054
<b>Immunogen</b>	A synthesized peptide derived from human APC
<b>Species Reactivity</b>	Human, Rat
<b>Tested Applications</b>	ELISA, WB, IHC; Recommended dilution: WB:1:500-1:5000, IHC:1:50-1:200
<b>Relevance</b>	Tumor suppressor. Promotes rapid degradation of CTNNB1 and participates in Wnt signaling as a negative regulator. APC activity is correlated with its phosphorylation state. Activates the GEF activity of SPATA13 and ARHGEF4. Plays a role in hepatocyte growth factor (HGF)-induced cell migration. Required for MMP9 up-regulation via the JNK signaling pathway in colorectal tumor cells. Acts as a mediator of ERBB2-dependent stabilization of microtubules at the cell cortex. It is required for the localization of MACF1 to the cell membrane and this localization of MACF1 is critical for its function in microtubule stabilization.
<b>Form</b>	Liquid
<b>Conjugate</b>	Non-conjugated
<b>Storage Buffer</b>	Rabbit IgG in phosphate buffered saline, pH 7.4, 150mM NaCl, 0.02% sodium azide and 50% glycerol.
<b>Purification Method</b>	Affinity-chromatography
<b>Isotype</b>	Rabbit IgG
<b>Clonality</b>	Monoclonal
<b>Product Type</b>	Recombinant Antibody
<b>Immunogen Species</b>	Homo sapiens (Human)
<b>Research Area</b>	Epigenetics and Nuclear Signaling; Neuroscience; Cancer; Cardiovascular; Cell biology; Stem cells
<b>Gene Names</b>	APC
<b>Accession NO.</b>	5F2

## Image



### Western Blot

Positive WB detected in: HeLa whole cell lysate, K562 whole cell lysate, SH-SY5Y whole cell lysate, A549 whole cell lysate, Rat Brain whole cell lysate

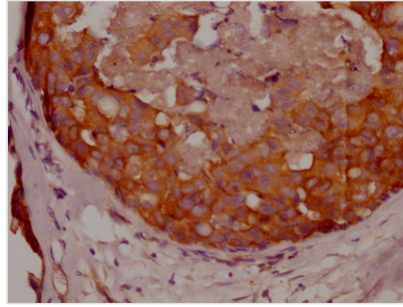
All lanes: APC antibody at 1:1000

Secondary

Goat polyclonal to rabbit IgG at 1/50000 dilution

Predicted band size: 312, 301, 309 kDa

Observed band size: 160 kDa



IHC image of CSB-RA951649A0HU diluted at 1:100 and staining in paraffin-embedded human breast cancer performed on a Leica Bond™ system. After dewaxing and hydration, antigen retrieval was mediated by high pressure in a citrate buffer (pH 6.0). Section was blocked with 10% normal goat serum 30min at RT. Then primary antibody (1% BSA) was incubated at 4°C overnight. The primary is detected by a Goat anti-rabbit IgG polymer labeled by HRP and visualized using 0.05% DAB.