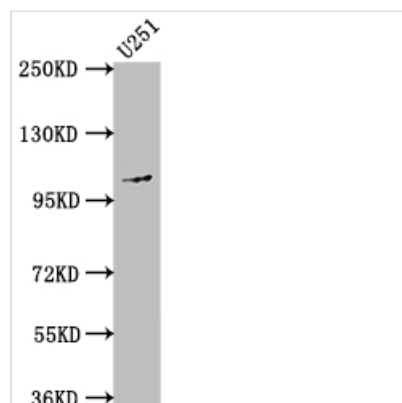




# MME Antibody

<b>Product Code</b>	CSB-RA940661A0HU
<b>Storage</b>	Upon receipt, store at -20°C or -80°C. Avoid repeated freeze.
<b>Uniprot No.</b>	P08473
<b>Immunogen</b>	A synthesized peptide derived from human CD10
<b>Species Reactivity</b>	Human
<b>Tested Applications</b>	ELISA, WB; Recommended dilution: WB:1:500-1:5000
<b>Relevance</b>	Thermolysin-like specificity, but is almost confined on acting on polypeptides of up to 30 amino acids (PubMed:15283675, PubMed:8168535). Biologically important in the destruction of opioid peptides such as Met- and Leu-enkephalins by cleavage of a Gly-Phe bond (PubMed:17101991). Able to cleave angiotensin-1, angiotensin-2 and angiotensin 1-9 (PubMed:15283675). Involved in the degradation of atrial natriuretic factor (ANF) (PubMed:2531377, PubMed:2972276). Displays UV-inducible elastase activity toward skin preelastic and elastic fibers (PubMed:20876573).
<b>Form</b>	Liquid
<b>Conjugate</b>	Non-conjugated
<b>Storage Buffer</b>	Rabbit IgG in phosphate buffered saline, pH 7.4, 150mM NaCl, 0.02% sodium azide and 50% glycerol.
<b>Purification Method</b>	Affinity-chromatography
<b>Isotype</b>	Rabbit IgG
<b>Clonality</b>	Monoclonal
<b>Product Type</b>	Recombinant Antibody
<b>Immunogen Species</b>	Homo sapiens (Human)
<b>Research Area</b>	Cancer; Immunology; Stem cells
<b>Gene Names</b>	MME
<b>Accession NO.</b>	7F6

## Image



### Western Blot

Positive WB detected in: U251 whole cell lysate

All lanes: MME antibody at 1:1500

Secondary

Goat polyclonal to rabbit IgG at 1/50000 dilution

Predicted band size: 86 kDa

Observed band size: 100 kDa



## Description

MME, also called CD10, is a cell surface zinc metalloendopeptidase expressed in various normal and neoplastic lymphoid and nonlymphoid tissues including melanomas. It was previously used as a cell surface marker to identify and differentiate between hematological malignancies. CD10 expression varies in distinct cancer types. CD10 is highly expressed in prostate cancer, melanomas, and papillary thyroid cancer, while its expression is declined in cervical carcinoma and adenocarcinoma of the gastrointestinal tract.

Compared with the polyclonal and monoclonal antibodies of MME, this MME recombinant antibody has the features of increased reproducibility and control, animal-free technology, high degree of monovalency, high batch-to-batch consistency, easier isotype conversion, etc. And it has been validated in ELISA, WB.