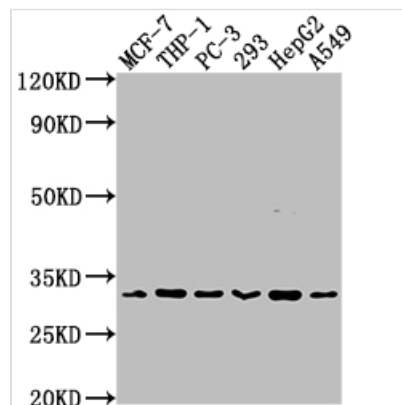




CD8A Antibody

| | |
|----------------------------|---|
| Product Code | CSB-RA934881A0HU |
| Storage | Upon receipt, store at -20°C or -80°C. Avoid repeated freeze. |
| Uniprot No. | P01732 |
| Immunogen | A synthesized peptide derived from human CD8 |
| Species Reactivity | Human |
| Tested Applications | ELISA, WB, IHC, IP; Recommended dilution: WB:1:500-1:5000, IHC:1:50-1:200, IP:1:200-1:1000 |
| Relevance | Identifies cytotoxic/suppressor T-cells that interact with MHC class I bearing targets. CD8 is thought to play a role in the process of T-cell mediated killing. CD8 alpha chains binds to class I MHC molecules alpha-3 domains. |
| Form | Liquid |
| Conjugate | Non-conjugated |
| Storage Buffer | Rabbit IgG in phosphate buffered saline, pH 7.4, 150mM NaCl, 0.02% sodium azide and 50% glycerol. |
| Purification Method | Affinity-chromatography |
| Isotype | Rabbit IgG |
| Clonality | Monoclonal |
| Product Type | Recombinant Antibody |
| Immunogen Species | Homo sapiens (Human) |
| Research Area | Immunology |
| Gene Names | CD8A |
| Accession NO. | 2F2 |

Image



Western Blot

Positive WB detected in: MCF-7 whole cell lysate, THP-1 whole cell lysate, PC-3 whole cell lysate, 293 whole cell lysate, HepG2 whole cell lysate, A549 whole cell lysate

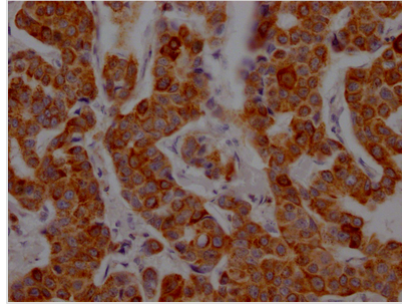
All lanes: CD8A antibody at 1:2000

Secondary

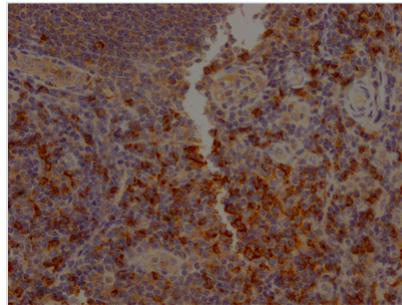
Goat polyclonal to rabbit IgG at 1/50000 dilution

Predicted band size: 26, 22, 31 kDa

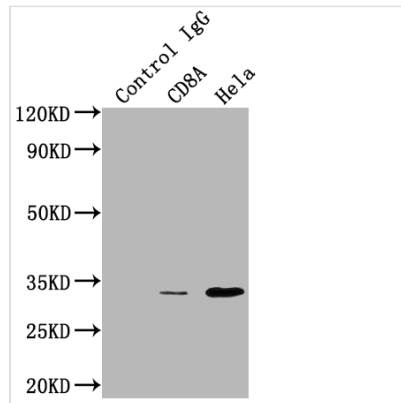
Observed band size: 31 kDa



IHC image of CSB-RA934881A0HU diluted at 1:100 and staining in paraffin-embedded human breast cancer performed on a Leica Bond™ system. After dewaxing and hydration, antigen retrieval was mediated by high pressure in a citrate buffer (pH 6.0). Section was blocked with 10% normal goat serum 30min at RT. Then primary antibody (1% BSA) was incubated at 4°C overnight. The primary is detected by a Goat anti-rabbit IgG polymer labeled by HRP and visualized using 0.05% DAB.



IHC image of CSB-RA934881A0HU diluted at 1:100 and staining in paraffin-embedded human tonsil tissue performed on a Leica Bond™ system. After dewaxing and hydration, antigen retrieval was mediated by high pressure in a citrate buffer (pH 6.0). Section was blocked with 10% normal goat serum 30min at RT. Then primary antibody (1% BSA) was incubated at 4°C overnight. The primary is detected by a Goat anti-rabbit IgG polymer labeled by HRP and visualized using 0.05% DAB.



Immunoprecipitating CD8A in HepG2 whole cell lysate

Lane 1: Rabbit control IgG instead of CSB-RA934881A0HU in HepG2 whole cell lysate. For western blotting, a HRP-conjugated Protein G antibody was used as the secondary antibody (1/2000)

Lane 2: CSB-RA934881A0HU (3µg) + HepG2 whole cell lysate (500µg)

Lane 3: HepG2 whole cell lysate (10µg)