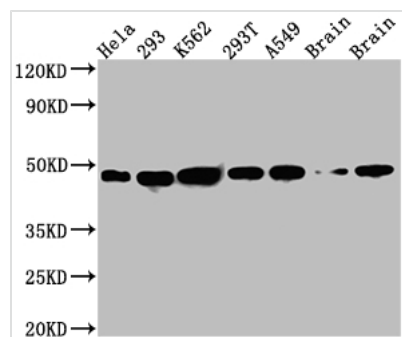




# NUDC Antibody

<b>Product Code</b>	CSB-RA906015A0HU
<b>Storage</b>	Upon receipt, store at -20°C or -80°C. Avoid repeated freeze.
<b>Uniprot No.</b>	Q9Y266
<b>Immunogen</b>	A synthesized peptide derived from human NUDC
<b>Species Reactivity</b>	Human, Mouse, Rat
<b>Tested Applications</b>	ELISA, WB; Recommended dilution: WB:1:500-1:5000
<b>Relevance</b>	Plays a role in neurogenesis and neuronal migration (By similarity). Necessary for correct formation of mitotic spindles and chromosome separation during mitosis. Necessary for cytokinesis and cell proliferation.
<b>Form</b>	Liquid
<b>Conjugate</b>	Non-conjugated
<b>Storage Buffer</b>	Rabbit IgG in phosphate buffered saline, pH 7.4, 150mM NaCl, 0.02% sodium azide and 50% glycerol.
<b>Purification Method</b>	Affinity-chromatography
<b>Isotype</b>	Rabbit IgG
<b>Clonality</b>	Monoclonal
<b>Product Type</b>	Recombinant Antibody
<b>Immunogen Species</b>	Homo sapiens (Human)
<b>Research Area</b>	Neuroscience; Cell biology
<b>Gene Names</b>	NUDC
<b>Accession NO.</b>	6C3

## Image



### Western Blot

Positive WB detected in: HeLa whole cell lysate, 293 whole cell lysate, K562 whole cell lysate, 293T whole cell lysate, A549 whole cell lysate, Rat Brain whole cell lysate, Mouse Brain whole cell lysate

All lanes: NUDC antibody at 1:1000

Secondary

Goat polyclonal to rabbit IgG at 1/50000 dilution

Predicted band size: 39 kDa

Observed band size: 45 kDa

## Description

The NUDC antibody CSB-RA906015A0HU is a rabbit IgG recombinant monoclonal antibody. The acquisition of the HUAC6 monoclonal antibody using the synthesized peptide derived from the human NUDC immunizes animals, the determination of the NUDC monoclonal antibody's DNA sequence, and the cloning of the DNA sequence into the plasmid and subsequent transfection into



cell lines for expression are among the procedures used in its production. Affinity chromatography was used to purify this NUDC antibody. It has been put to the test in a variety of ways, including ELISA and WB. The NUDC protein from human, mouse, and rat samples reacts with this NUDC antibody.

NUDC, a dynein-associated nuclear movement protein, forms a biochemical complex with dynein/dynactin complex components and is involved in nuclear translocation in proliferating neural progenitors and migrating neurons in culture. NUDC regulates microtubule structure at the midzone and midbody, which is important for mitosis and cytokinesis. By stabilizing cofilin 1 in an Hsp90-independent manner, NUDC modulates actin dynamics and cell motility.