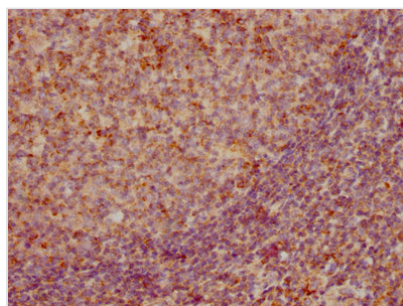




CCL19 Antibody

Product Code	CSB-RA859522A0HU
Abbreviation	C-C motif chemokine 19
Storage	Upon receipt, store at -20°C or -80°C. Avoid repeated freeze.
Uniprot No.	Q99731
Immunogen	A synthesized peptide derived from human CCL19
Species Reactivity	Human
Tested Applications	ELISA, IHC; Recommended dilution: IHC:1:50-1:200
Relevance	May play a role not only in inflammatory and immunological responses but also in normal lymphocyte recirculation and homing. May play an important role in trafficking of T-cells in thymus, and T-cell and B-cell migration to secondary lymphoid organs. Binds to chemokine receptor CCR7. Recombinant CCL19 shows potent chemotactic activity for T-cells and B-cells but not for granulocytes and monocytes. Binds to atypical chemokine receptor ACKR4 and mediates the recruitment of beta-arrestin (ARRB1/2) to ACKR4.
Form	Liquid
Conjugate	Non-conjugated
Storage Buffer	Rabbit IgG in phosphate buffered saline , pH 7.4, 150mM NaCl, 0.02% sodium azide and 50% glycerol.
Purification Method	Affinity-chromatography
Isotype	Rabbit IgG
Clonality	Monoclonal
Alias	C-C motif chemokine 19, Beta-chemokine exodus-3, CK beta-11, Epstein-Barr virus-induced molecule 1 ligand chemokine, EB11 ligand chemokine, ELC, Macrophage inflammatory protein 3 beta, MIP-3-beta, Small-inducible cytokine A19, CCL19, ELC, MIP3B, SCYA19
Immunogen Species	Homo sapiens (Human)
Research Area	Immunology
Gene Names	CCL19
Accession NO.	3A12

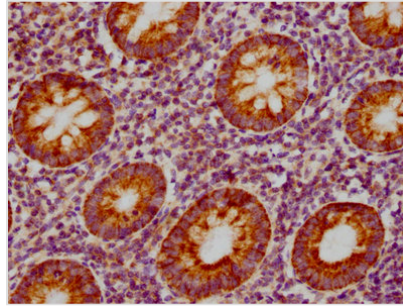
Image



IHC image of CSB-RA859522A0HU diluted at 1:155 and staining in paraffin-embedded human tonsil tissue performed on a Leica BondTM system. After dewaxing and hydration, antigen retrieval was mediated by high pressure in a citrate buffer (pH 6.0). Section was blocked with 10% normal goat serum 30min at RT. Then primary antibody (1% BSA) was incubated at 4°C overnight. The primary is detected by a



biotinylated secondary antibody and visualized using an HRP conjugated SP system.



IHC image of CSB-RA859522A0HU diluted at 1:155 and staining in paraffin-embedded human appendix tissue performed on a Leica BondTM system. After dewaxing and hydration, antigen retrieval was mediated by high pressure in a citrate buffer (pH 6.0). Section was blocked with 10% normal goat serum 30min at RT. Then primary antibody (1% BSA) was incubated at 4°C overnight. The primary is detected by a biotinylated secondary antibody and visualized using an HRP conjugated SP system.

Description

CUSABIO cloned CCL19 antibody-coding genes into plasma vectors and then transfected these vector clones into mammalian cells using a lipid-based transfection reagent. Following transient expression, the recombinant antibodies against CCL19 were harvested and characterized. The recombinant CCL19 antibody was purified by affinity-chromatography from the culture medium. It can be used to detect CCL19 protein from Human in the ELISA, IHC.

Chemokine CC ligand 19 (CCL19), which is also named as macrophage inflammatory protein 3-beta (MIP-3b), mediates various cellular behaviors by binding to CCR7. Recent articles have indicated that the CCL19/CCR7 axis can promote tumor progression. Nevertheless, some other studies indicated that CCL19 can modulate anti-tumor responses in lung cancer and ovarian cancer. previous studies demonstrated that CCL19 inhibited tumorigenesis, metastasis and angiogenesis, and the expression of CCL19 was associated with the prognosis of CRC patients. CCL19 can inhibit the ERK/Elk-1 pathway, which is accompanied by the suppression of HIF-1 α and VEGF-A. CCL19 is a critical regulator of the induction of T cell activation, immune tolerance, and inflammatory responses during continuous immune surveillance, homeostasis, and development. Local injection of CCL19-expressing mesenchymal stem cells augments the therapeutic efficacy of anti-PD-L1 antibody by promoting infiltration of immune cells. CCL19 with CCL21-tail displays enhanced glycosaminoglycan binding with retained chemotactic potency in dendritic cells.