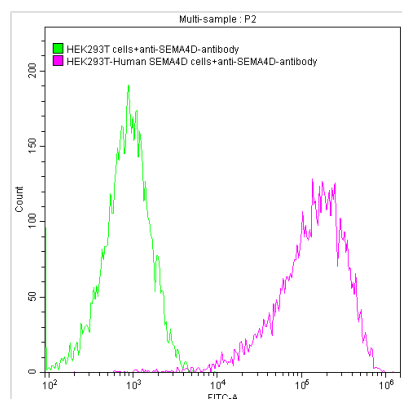




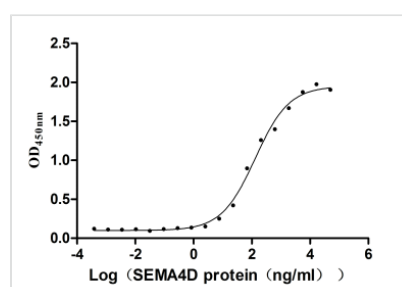
# SEMA4D Monoclonal Antibody

<b>Product Code</b>	CSB-RA835707A1HU
<b>Storage</b>	Upon receipt, store at -20°C or -80°C. Avoid repeated freeze.
<b>Uniprot No.</b>	Q92854
<b>Immunogen</b>	Recombinant Human SEMA4D protein
<b>Species Reactivity</b>	Human
<b>Tested Applications</b>	ELISA, FC; Recommended dilution: FC:1:50-1:200
<b>Form</b>	Liquid
<b>Conjugate</b>	Non-conjugated
<b>Storage Buffer</b>	Preservative: 0.03% Proclin 300 Constituents: 50% Glycerol, 0.01M PBS, PH 7.4
<b>Purification Method</b>	Affinity-chromatography
<b>Isotype</b>	hIgG4(S228P)
<b>Clonality</b>	Monoclonal
<b>Product Type</b>	Recombinant Antibody
<b>Immunogen Species</b>	Homo sapiens (Human)
<b>Research Area</b>	Neuroscience;Immunology
<b>Gene Names</b>	SEMA4D
<b>Accession NO.</b>	21E8

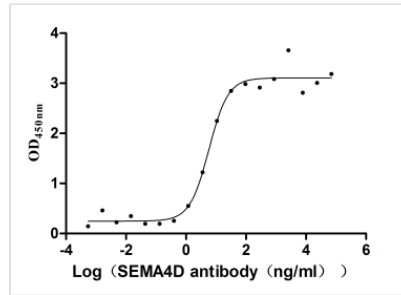
## Image



Untransfected HEK293T cells (green line) and transfected Human SEMA4D HEK293T stable cells (red line) were stained with anti-SEMA4D antibody (2 $\mu$ g/1\*10<sup>6</sup> cells), washed and then followed by FITC-conjugated anti-Human IgG Fc antibody and analyzed with flow cytometry.



The Binding Activity of Mouse Sema4d with Anti-SEMA4D recombinant antibody.  
Activity: Measured by its binding ability in a functional ELISA. Immobilized Mouse Sema4d (CSB-MP020990MO) at 2  $\mu$ g/mL can bind Anti-SEMA4D recombinant antibody, the EC<sub>50</sub> is 98.14-174.8 ng/mL.



The Binding Activity of Human SEMA4D with Anti-SEMA4D recombinant antibody.

Activity: Measured by its binding ability in a functional ELISA. Immobilized Human SEMA4D (CSB-MP835707HU) at 2 µg/mL can bind Anti-SEMA4D recombinant antibody, the EC<sub>50</sub> is 1.082-4.805 ng/mL.

## Description

The SEMA4D recombinant monoclonal antibody is a highly specific antibody against the SEMA4D protein. This SEMA4D antibody was expressed through the clone of the DNA sequence encoding the SEMA4D monoclonal antibody into plasmids and subsequent transfection into cell lines. Its isotype matches with the human IgG4. This SEMA4D antibody can be used in ELISA and FC applications and recognizes the SEMA4D protein from human and mouse samples. In the ELISA, mouse SEMA4D and human SEMA4D can bind to this recombinant SEMA4D antibody with the EC50 of 98.14-174.8 ng/mL and 1.082-4.805 ng/mL, respectively. It has been purified through affinity chromatography.

SEMA4D antibody has been received increasing attention due to growing research of SEMA4D-associated diseases. Jonathan W. Goldman et al. demonstrated that the SEMA4D antibody reversed the immune balance in the tumor microenvironment (TME) and overcame immune rejection and myeloid suppression. A combination of anti-SEMA4D antibody pepinembab with the immune checkpoint inhibitor avelumab can enhance T cell infiltration and activation and lead to durable tumor regression in pre-clinical animal models with NSCLC. Yilin Mao et al. revealed that anti-SEMA4D antibody immunotherapy blocks SEMA4D-Plexin B1 signaling and mitigates Rett syndrome-specific symptoms and improves cognitive and motor function in mice model with Rett syndrome.