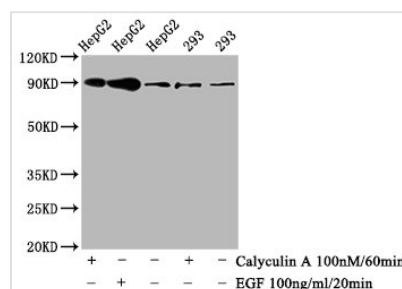




Phospho-NFE2L2 (S40) Antibody

Product Code	CSB-RA614961A40phHU
Abbreviation	Nuclear factor erythroid 2-related factor 2
Storage	Upon receipt, store at -20°C or -80°C. Avoid repeated freeze.
Uniprot No.	Q16236
Immunogen	A synthesized peptide derived from Human Phospho-NFE2L2 (S40)
Species Reactivity	Human
Tested Applications	ELISA, WB, IHC, IF; Recommended dilution: WB:1:500-1:5000, IHC:1:50-1:200, IF:1:20-1:200
Relevance	Transcription activator that binds to antioxidant response (ARE) elements in the promoter regions of target genes. Important for the coordinated up-regulation of genes in response to oxidative stress. May be involved in the transcriptional activation of genes of the beta-globin cluster by mediating enhancer activity of hypersensitive site 2 of the beta-globin locus control region.
Form	Liquid
Conjugate	Non-conjugated
Storage Buffer	Rabbit IgG in phosphate buffered saline , pH 7.4, 150mM NaCl, 0.02% sodium azide and 50% glycerol.
Purification Method	Affinity-chromatography
Isotype	Rabbit IgG
Clonality	Monoclonal
Alias	Nuclear factor erythroid 2-related factor 2, NF-E2-related factor 2, NFE2-related factor 2, HEBP1, Nuclear factor, erythroid derived 2, like 2, NFE2L2, NRF2
Immunogen Species	Homo sapiens (Human)
Research Area	Epigenetics and Nuclear Signaling
Gene Names	NFE2L2
Accession NO.	2E6

Image



Western Blot

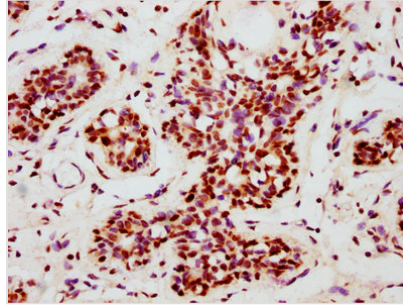
Positive WB detected in HepG2 whole cell lysate, 293 whole cell lysate (treated with Calyculin A or EGF)

All lanes Phospho-NFE2L2 antibody at 0.8µg/ml
Secondary

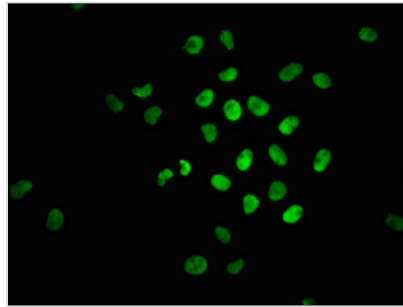
Goat polyclonal to rabbit IgG at 1/50000 dilution

Predicted band size: 90 KDa

Observed band size: 90 KDa



IHC image of CSB-RA008836A253pHUU diluted at 1:100 and staining in paraffin-embedded human breast cancer performed on a Leica BondTM system. After dewaxing and hydration, antigen retrieval was mediated by high pressure in a citrate buffer (pH 6.0). Section was blocked with 10% normal goat serum 30min at RT. Then primary antibody (1% BSA) was incubated at 4°C overnight. The primary is detected by a biotinylated secondary antibody and visualized using an HRP conjugated SP system.



Immunofluorescence staining of HeLa cells with CSB-RA614961A40pHUU at 1:100, counter-stained with DAPI. The cells were fixed in 4% formaldehyde, permeabilized using 0.2% Triton X-100 and blocked in 10% normal Goat Serum. The cells were then incubated with the antibody overnight at 4°C. The secondary antibody was Alexa Fluor 488-conjugated AffiniPure Goat Anti-Rabbit IgG (H+L).

Description

CUSABIO got the DNA sequence of the phospho-NFE2L2 (S40) monoclonal antibody that was produced from the splenocytes generated by the phosphopeptide corresponding to human NFE2L2 (phospho S40) immunization. The DNA sequence was cloned into the plasmid and then transfected the into cell lines for in vitro expression. The product is the phospho-NFE2L2 (S40) recombinant monoclonal antibody. It is a rabbit IgG antibody purified using the affinity-chromatography method. This phospho-NFE2L2 (S40) antibody is recommended for WB, IHC, and IF applications and detects the human NFE2L2 phosphorylated at Ser 40 residue.

NFE2L2 is a transcription factor that regulates the physiological response to ROS and oxidative stress. PKC phosphorylates NFE2L2 at Ser40 in response to oxidative stress. Phosphorylated NFE2L2 at Ser40 has been shown to assist its liberation from the cytoplasmic anchor KEAP1 and trigger nuclear translocation. The phosphorylation of NFE2L2 at Ser40 by PKC is a crucial signaling event that leads to a cellular antioxidant response mediated by the antioxidant response element (ARE).