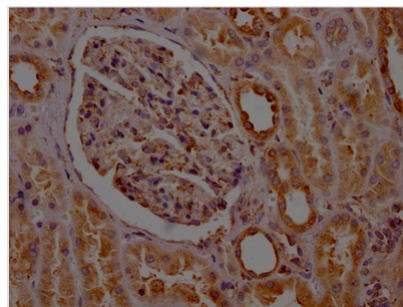




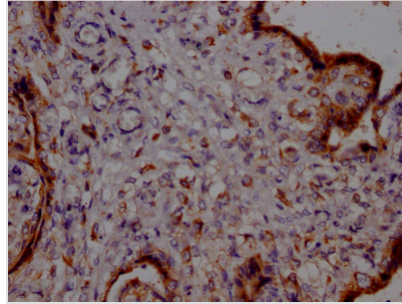
PTGER2 Antibody

Product Code	CSB-RA585843A0HU
Storage	Upon receipt, store at -20°C or -80°C. Avoid repeated freeze.
Uniprot No.	P43116
Immunogen	A synthesized peptide derived from human PTGER2
Species Reactivity	Human
Tested Applications	ELISA, IHC; Recommended dilution: IHC:1:50-1:200
Relevance	Receptor for prostaglandin E2 (PGE2). The activity of this receptor is mediated by G(s) proteins that stimulate adenylate cyclase. The subsequent raise in intracellular cAMP is responsible for the relaxing effect of this receptor on smooth muscle.
Form	Liquid
Conjugate	Non-conjugated
Storage Buffer	Rabbit IgG in phosphate buffered saline, pH 7.4, 150mM NaCl, 0.02% sodium azide and 50% glycerol.
Purification Method	Affinity-chromatography
Isotype	Rabbit IgG
Clonality	Monoclonal
Product Type	Recombinant Antibody
Immunogen Species	Homo sapiens (Human)
Research Area	Cancer; Metabolism; Signal transduction
Gene Names	PTGER2
Accession NO.	8D8

Image



IHC image of CSB-RA585843A0HU diluted at 1:100 and staining in paraffin-embedded human kidney tissue performed on a Leica Bond™ system. After dewaxing and hydration, antigen retrieval was mediated by high pressure in a citrate buffer (pH 6.0). Section was blocked with 10% normal goat serum 30min at RT. Then primary antibody (1% BSA) was incubated at 4°C overnight. The primary is detected by a Goat anti-rabbit IgG polymer labeled by HRP and visualized using 0.05% DAB.



IHC image of CSB-RA585843A0HU diluted at 1:100 and staining in paraffin-embedded human placenta tissue performed on a Leica BondTM system. After dewaxing and hydration, antigen retrieval was mediated by high pressure in a citrate buffer (pH 6.0). Section was blocked with 10% normal goat serum 30min at RT. Then primary antibody (1% BSA) was incubated at 4°C overnight. The primary is detected by a Goat anti-rabbit IgG polymer labeled by HRP and visualized using 0.05% DAB.

Description

PTGER2 is an arachidonic acid metabolite that binds to and modulates cellular responses to PGE₂. PTGER2-PGE₂ signaling regulates a variety of physiological activities, including tumor incidence, invasion, metastasis, angiogenesis, chronic inflammation, tumor immunity, and cell death, through a variety of signaling pathways. PTGER2 expression is aberrant in various malignancies, including colon, prostate, liver, and breast cancer. Furthermore, PTGER2 has been linked to a worse prognosis in patients with chronic obstructive lung disease. The abnormal expression of PTGER2 has been associated with factors linked to cancer formation, such as chronic inflammation, immunoregulation, angiogenesis, metastasis, and multidrug resistance.

Mammalian cells are transfected with plasma vectors containing PTGER2 antibody genes, allowing for both recombinant PTGER2 antibody expression and secretion to the medium. Collecting the cell supernatant and purifying to obtain the recombinant PTGER2 antibody by Affinity-chromatography. This recombinant PTGER2 antibody has been validated to detect the PTGER2 protein of Human in the ELISA, IHC.