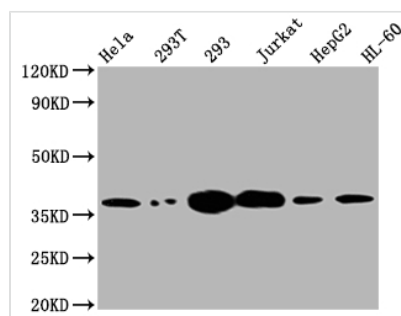




TYMS Antibody

Product Code	CSB-RA584889A0HU
Storage	Upon receipt, store at -20°C or -80°C. Avoid repeated freeze.
Uniprot No.	P04818
Immunogen	A synthesized peptide derived from human Thymidylate Synthase
Species Reactivity	Human
Tested Applications	ELISA, WB; Recommended dilution: WB:1:500-1:5000
Relevance	Contributes to the de novo mitochondrial thymidylate biosynthesis pathway.
Form	Liquid
Conjugate	Non-conjugated
Storage Buffer	Rabbit IgG in phosphate buffered saline, pH 7.4, 150mM NaCl, 0.02% sodium azide and 50% glycerol.
Purification Method	Affinity-chromatography
Isotype	Rabbit IgG
Clonality	Monoclonal
Product Type	Recombinant Antibody
Immunogen Species	Homo sapiens (Human)
Research Area	Epigenetics and Nuclear Signaling; Metabolism
Gene Names	TYMS
Accession NO.	2B2

Image



Western Blot

Positive WB detected in: HeLa whole cell lysate, 293T whole cell lysate, 293 whole cell lysate, Jurkat whole cell lysate, HepG2 whole cell lysate, HL-60 whole cell lysate

All lanes: Thymidylate Synthase antibody at 1:2000

Secondary

Goat polyclonal to rabbit IgG at 1/50000 dilution

Predicted band size: 36, 32, 27 kDa

Observed band size: 36 kDa

Description

Thymidylate synthase (TYMS) is an enzyme involved in DNA replication and repair. TYMS catalyzes the dUMP conversion for the dTMP process of DNA synthesis in the folate metabolism deriving from the food. The conversion is required for the formation of thymidine, a nucleotide that is required for DNA synthesis and repair. The expression of TYMS is a rate-limiting characteristic for both cell proliferation and cancer progression. High TYMS expression has been reported in breast cancer, non-small cell lung cancers, and prostate cancer.



CUSABIO designed the vector clones for the expression of a recombinant TYMS antibody in mammalian cells. The vector clones were obtained by inserting the TYMS antibody heavy and light chains into the plasma vectors. The recombinant TYMS antibody was purified from the culture medium through Affinity-chromatography. It can be used to detect TYMS protein from Human in the ELISA, WB.