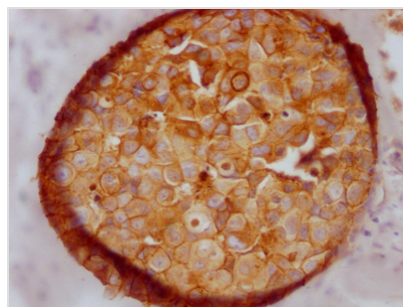




# CDH1 Antibody

<b>Product Code</b>	CSB-RA576116A0HU
<b>Storage</b>	Upon receipt, store at -20°C or -80°C. Avoid repeated freeze.
<b>Uniprot No.</b>	P12830
<b>Immunogen</b>	A synthesized peptide derived from human E Cadherin
<b>Species Reactivity</b>	Human
<b>Tested Applications</b>	ELISA, IHC; Recommended dilution: IHC:1:50-1:200
<b>Relevance</b>	Cadherins are calcium-dependent cell adhesion proteins (PubMed:11976333). They preferentially interact with themselves in a homophilic manner in connecting cells; cadherins may thus contribute to the sorting of heterogeneous cell types. CDH1 is involved in mechanisms regulating cell-cell adhesions, mobility and proliferation of epithelial cells (PubMed:11976333). Has a potent invasive suppressor role. It is a ligand for integrin alpha-E/beta-7.
<b>Form</b>	Liquid
<b>Conjugate</b>	Non-conjugated
<b>Storage Buffer</b>	Rabbit IgG in phosphate buffered saline, pH 7.4, 150mM NaCl, 0.02% sodium azide and 50% glycerol.
<b>Purification Method</b>	Affinity-chromatography
<b>Isotype</b>	Rabbit IgG
<b>Clonality</b>	Monoclonal
<b>Product Type</b>	Recombinant Antibody
<b>Immunogen Species</b>	Homo sapiens (Human)
<b>Research Area</b>	Cancer; Developmental biology; Signal transduction
<b>Gene Names</b>	CDH1
<b>Accession NO.</b>	1E1

## Image



IHC image of CSB-RA576116A0HU diluted at 1:100 and staining in paraffin-embedded human breast cancer performed on a Leica Bond™ system. After dewaxing and hydration, antigen retrieval was mediated by high pressure in a citrate buffer (pH 6.0). Section was blocked with 10% normal goat serum 30min at RT. Then primary antibody (1% BSA) was incubated at 4°C overnight. The primary is detected by a Goat anti-rabbit IgG polymer labeled by HRP and visualized using 0.05% DAB.

## Description

CDH1 encodes E-cadherin, a cell adhesion glycoprotein that is involved in major cellular processes such as embryogenesis and maintenance of tissue



architecture. E-cadherin is required for the compaction of the morula and subsequent organization of epithelial tissues during embryonic development. In adult epithelia, E-cadherin mediates the creation and maintenance of tissue architecture and homeostasis. These functions are achieved by homophilic binding of the extracellular domains of cadherins present on neighboring cells, creating adherens junctions. E-cadherin genetic variants may have a role in cancer invasion and metastasis via affecting epithelial cell gene transcriptional activity.

The recombinant CDH1 antibody was produced by cloning antibody genes into an expression vectors, which were subsequently introduced into mammalian cells to provide animal-free antibody production. This CDH1 antibody has been validated in ELISA, IHC. It has the features of improved affinity, stability, and consistency between different batches.