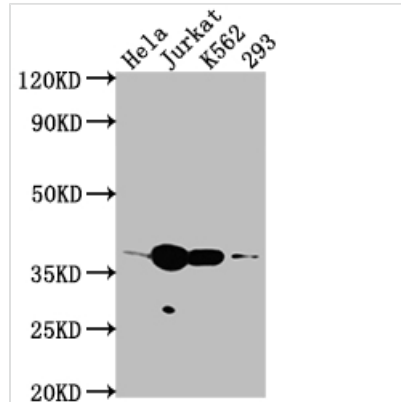




CDK6 Antibody

Product Code	CSB-RA555745A0HU
Storage	Upon receipt, store at -20°C or -80°C. Avoid repeated freeze.
Uniprot No.	Q00534
Immunogen	A synthesized peptide derived from human CDK6
Species Reactivity	Human
Tested Applications	ELISA, WB, IP; Recommended dilution: WB:1:500-1:5000, IP:1:200-1:1000
Relevance	<p>Serine/threonine-protein kinase involved in the control of the cell cycle and differentiation; promotes G1/S transition. Phosphorylates pRB/RB1 and NPM1. Interacts with D-type G1 cyclins during interphase at G1 to form a pRB/RB1 kinase and controls the entrance into the cell cycle. Involved in initiation and maintenance of cell cycle exit during cell differentiation; prevents cell proliferation and regulates negatively cell differentiation, but is required for the proliferation of specific cell types (e.g. erythroid and hematopoietic cells). Essential for cell proliferation within the dentate gyrus of the hippocampus and the subventricular zone of the lateral ventricles. Required during thymocyte development. Promotes the production of newborn neurons, probably by modulating G1 length. Promotes, at least in astrocytes, changes in patterns of gene expression, changes in the actin cytoskeleton including loss of stress fibers, and enhanced motility during cell differentiation. Prevents myeloid differentiation by interfering with RUNX1 and reducing its transcription transactivation activity, but promotes proliferation of normal myeloid progenitors. Delays senescence. Promotes the proliferation of beta-cells in pancreatic islets of Langerhans. May play a role in the centrosome organization during the cell cycle phases (PubMed:23918663).</p>
Form	Liquid
Conjugate	Non-conjugated
Storage Buffer	Rabbit IgG in phosphate buffered saline, pH 7.4, 150mM NaCl, 0.02% sodium azide and 50% glycerol.
Purification Method	Affinity-chromatography
Isotype	Rabbit IgG
Clonality	Monoclonal
Product Type	Recombinant Antibody
Immunogen Species	Homo sapiens (Human)
Research Area	Epigenetics and Nuclear Signaling; Cancer; Cell biology
Gene Names	CDK6
Accession NO.	8G3
Image	


Western Blot

Positive WB detected in: HeLa whole cell lysate, Jurkat whole cell lysate, K562 whole cell lysate, 293 whole cell lysate

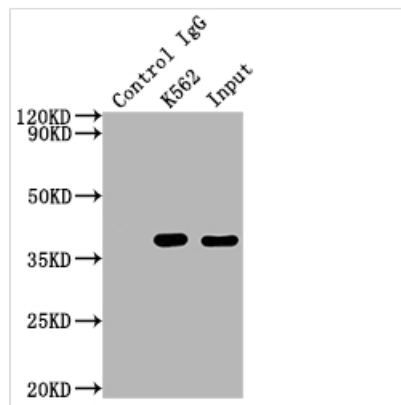
All lanes: CDK6 antibody at 1:2000

Secondary

Goat polyclonal to rabbit IgG at 1/50000 dilution

Predicted band size: 37 kDa

Observed band size: 37 kDa



Immunoprecipitating CDK6 in K562 whole cell lysate

Lane 1: Rabbit control IgG instead of CSB-RA555745A0HU in K562 whole cell lysate. For western blotting, a HRP-conjugated Protein G antibody was used as the secondary antibody (1/2000)

Lane 2: CSB-RA555745A0HU(2µg)+ K562 whole cell lysate(500µg)

Lane 3: K562 whole cell lysate (10µg)

Description

CUSABIO got the DNA sequence of the CDK6 monoclonal antibody that was produced from the splenocytes generated by the human CDK6 synthesized peptide immunization. The DNA sequence was cloned into the plasmid and then transfected into cell lines for in vitro expression. The product is the CDK6 recombinant monoclonal antibody. It is a rabbit IgG antibody and is purified using the affinity-chromatography method. This CDK6 antibody is recommended for ELISA, WB, and IP applications and recognizes and detects the CDK6 protein from human sources. Hae-Ahm Lee et al. used this CDK6 recombinant antibody in the experiment of the paper published in the Journal of Cancer. This CDK6 antibody has been well received by customers due to its high specificity and excellent sensitivity.

CDK6 and its homolog CDK4 induce proteins that regulate the cell cycle and promote the G1/S transition. Abnormal CDK6 expression or activation was frequently seen in human tumors can contribute to chronic inflammation and neoplasia through NF-κB.