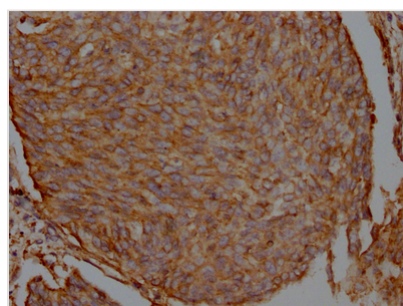




# FLNA Antibody

<b>Product Code</b>	CSB-RA548809A0HU
<b>Storage</b>	Upon receipt, store at -20°C or -80°C. Avoid repeated freeze.
<b>Uniprot No.</b>	P21333
<b>Immunogen</b>	A synthesized peptide derived from human Filamin A
<b>Species Reactivity</b>	Human
<b>Tested Applications</b>	ELISA, IHC; Recommended dilution: IHC:1:50-1:200
<b>Relevance</b>	Promotes orthogonal branching of actin filaments and links actin filaments to membrane glycoproteins. Anchors various transmembrane proteins to the actin cytoskeleton and serves as a scaffold for a wide range of cytoplasmic signaling proteins. Interaction with FLNA may allow neuroblast migration from the ventricular zone into the cortical plate. Tethers cell surface-localized furin, modulates its rate of internalization and directs its intracellular trafficking (By similarity). Involved in ciliogenesis. Plays a role in cell-cell contacts and adherens junctions during the development of blood vessels, heart and brain organs. Plays a role in platelets morphology through interaction with SYK that regulates ITAM- and ITAM-like-containing receptor signaling, resulting in by platelet cytoskeleton organization maintenance (By similarity).
<b>Form</b>	Liquid
<b>Conjugate</b>	Non-conjugated
<b>Storage Buffer</b>	Rabbit IgG in phosphate buffered saline, pH 7.4, 150mM NaCl, 0.02% sodium azide and 50% glycerol.
<b>Purification Method</b>	Affinity-chromatography
<b>Isotype</b>	Rabbit IgG
<b>Clonality</b>	Monoclonal
<b>Product Type</b>	Recombinant Antibody
<b>Immunogen Species</b>	Homo sapiens (Human)
<b>Research Area</b>	Signal transduction
<b>Gene Names</b>	FLNA
<b>Accession NO.</b>	1B2

## Image



IHC image of CSB-RA548809A0HU diluted at 1:100 and staining in paraffin-embedded human cervical cancer performed on a Leica Bond™ system. After dewaxing and hydration, antigen retrieval was mediated by high pressure in a citrate buffer (pH 6.0). Section was blocked with 10% normal goat serum 30min at RT. Then primary antibody (1% BSA) was incubated at 4°C overnight. The primary is detected by a Goat anti-rabbit IgG polymer labeled by HRP and



visualized using 0.05% DAB.

## Description

The recombinant FLNA antibody was prepared by obtaining the antibody genes, cloning the genes into a plasma vector to construct vector clone, transfecting the vector clone into a mammalian cell line for transient expression, and purifying the antibody by affinity-chromatography. This recombinant FLNA antibody has been verified to detect the FLNA protein from Human in the ELISA, IHC.

FLNA is an important actin cross-linking protein that attaches actin filaments in smooth muscle cells (SMCs) to transmembrane integrin molecules in focal adhesions of the cell membrane. It thus plays a central role in maintaining cell morphology, cell signaling, cell migration, and adhesion. FLNA mutations have been linked to a wide range of disorders, including bilateral contiguous PVH in females and periventricular nodular heterotopia. Alterations in FLNA expression are responsible for the development and progression of various cancers.