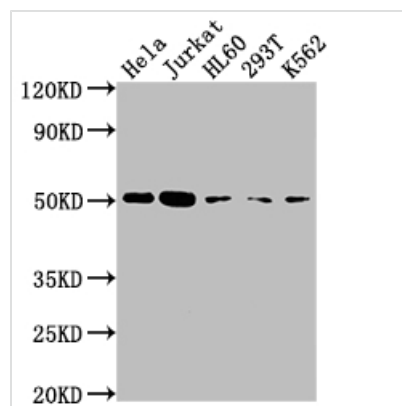




# CASP2 Antibody

<b>Product Code</b>	CSB-RA291376A0HU
<b>Storage</b>	Upon receipt, store at -20°C or -80°C. Avoid repeated freeze.
<b>Uniprot No.</b>	P42575
<b>Immunogen</b>	A synthesized peptide derived from human Caspase-2
<b>Species Reactivity</b>	Human
<b>Tested Applications</b>	ELISA, WB; Recommended dilution: WB:1:500-1:5000
<b>Relevance</b>	Involved in the activation cascade of caspases responsible for apoptosis execution. Might function by either activating some proteins required for cell death or inactivating proteins necessary for cell survival.
<b>Form</b>	Liquid
<b>Conjugate</b>	Non-conjugated
<b>Storage Buffer</b>	Rabbit IgG in phosphate buffered saline, pH 7.4, 150mM NaCl, 0.02% sodium azide and 50% glycerol.
<b>Purification Method</b>	Affinity-chromatography
<b>Isotype</b>	Rabbit IgG
<b>Clonality</b>	Monoclonal
<b>Product Type</b>	Recombinant Antibody
<b>Immunogen Species</b>	Homo sapiens (Human)
<b>Research Area</b>	Cancer; Cell biology; Metabolism
<b>Gene Names</b>	CASP2
<b>Accession NO.</b>	7E5

## Image



### Western Blot

Positive WB detected in: HeLa whole cell lysate, Jurkat whole cell lysate, HL60 whole cell lysate, 293T whole cell lysate, K562 whole cell lysate

All lanes: CASP2 antibody at 1:2000

Secondary

Goat polyclonal to rabbit IgG at 1/50000 dilution

Predicted band size: 51, 35, 11 kDa

Observed band size: 51 kDa

## Description

CASP2 is known to regulate apoptosis. It induces apoptosis during various stress conditions including heat shock, oxidative stress, and cytoskeleton disruption. Furthermore, CASP2 is involved in the cell cycle, DNA repair, lipid



biosynthesis, metabolic modulation, regulation of oxidant levels in the cells, and other non-apoptotic events. CASP2 contributes to the pathogenesis of aging, neurodegeneration, and cancer.

This recombinant CASP2 antibody was developed with the Single B cell platform. The main process included identification and isolation of single B cells; amplification and cloning of CASP2 antibody gene; expression, screening, and identification of antibody specificity. And this CASP2 antibody has been validated in ELISA, WB.