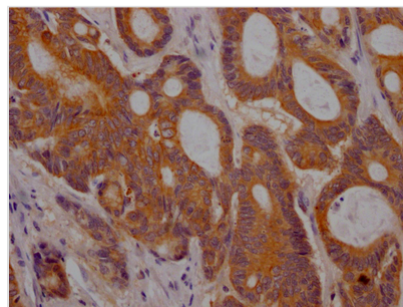




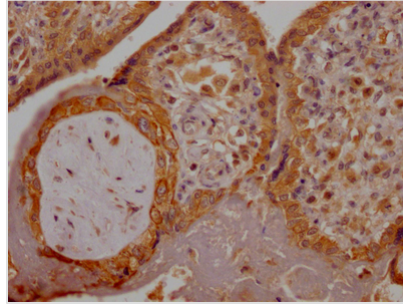
# PGF Antibody

<b>Product Code</b>	CSB-RA280380A0HU
<b>Storage</b>	Upon receipt, store at -20°C or -80°C. Avoid repeated freeze.
<b>Uniprot No.</b>	P49763
<b>Immunogen</b>	A synthesized peptide derived from human PLGF
<b>Species Reactivity</b>	Human
<b>Tested Applications</b>	ELISA, IHC; Recommended dilution: IHC:1:50-1:200
<b>Relevance</b>	Growth factor active in angiogenesis and endothelial cell growth, stimulating their proliferation and migration. It binds to the receptor FLT1/VEGFR-1. Isoform PlGF-2 binds NRP1/neuropilin-1 and NRP2/neuropilin-2 in a heparin-dependent manner. Also promotes cell tumor growth.
<b>Form</b>	Liquid
<b>Conjugate</b>	Non-conjugated
<b>Storage Buffer</b>	Rabbit IgG in phosphate buffered saline, pH 7.4, 150mM NaCl, 0.02% sodium azide and 50% glycerol.
<b>Purification Method</b>	Affinity-chromatography
<b>Isotype</b>	Rabbit IgG
<b>Clonality</b>	Monoclonal
<b>Product Type</b>	Recombinant Antibody
<b>Immunogen Species</b>	Homo sapiens (Human)
<b>Research Area</b>	Cancer; Cardiovascular; Metabolism
<b>Gene Names</b>	PGF
<b>Accession NO.</b>	1B6

## Image



IHC image of CSB-RA280380A0HU diluted at 1:100 and staining in paraffin-embedded human colon cancer performed on a Leica Bond<sup>TM</sup> system. After dewaxing and hydration, antigen retrieval was mediated by high pressure in a citrate buffer (pH 6.0). Section was blocked with 10% normal goat serum 30min at RT. Then primary antibody (1% BSA) was incubated at 4°C overnight. The primary is detected by a Goat anti-rabbit IgG polymer labeled by HRP and visualized using 0.05% DAB.



IHC image of CSB-RA280380A0HU diluted at 1:100 and staining in paraffin-embedded human placenta tissue performed on a Leica Bond™ system. After dewaxing and hydration, antigen retrieval was mediated by high pressure in a citrate buffer (pH 6.0). Section was blocked with 10% normal goat serum 30min at RT. Then primary antibody (1% BSA) was incubated at 4°C overnight. The primary is detected by a Goat anti-rabbit IgG polymer labeled by HRP and visualized using 0.05% DAB.

## Description

PGF is an angiogenic growth factor of the vascular endothelial growth factor (VEGF) family that is mostly expressed in the placenta. Increasing evidence has shown that PGF is an essential molecule in the diagnosis, prevention, and treatment of pre-eclampsia. It has pro-angiogenic effects on the feto-placental circulation and supports trophoblast growth. In tissues other than the placenta, PGF's principal function is angiogenesis in reaction to pathological ischemia or damage. PGF is not required for development or health, but it plays an important role in pathology, such as cancer. PGF promotes tumor development, progression, and dissemination by supporting pathological angiogenesis selectively.

The recombinant PGF antibody is a monoclonal antibody generated by cloning PGF antibody genes into plasma vectors and transfecting vector clones into stable cell lines for production. For recombinant antibody generation, mammalian cell lines like CHO cells and HEK293 are commonly used. The recombinant PGF antibody was purified using Affinity-chromatography. It has verified to detect PGF protein from Human in the ELISA, IHC.