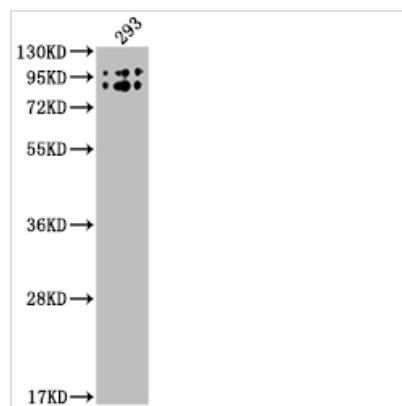




BCHE Antibody

Product Code	CSB-RA252650A0HU
Storage	Upon receipt, store at -20°C or -80°C. Avoid repeated freeze.
Uniprot No.	P06276
Immunogen	A synthesized peptide derived from human BCHE
Species Reactivity	Human
Tested Applications	ELISA, WB; Recommended dilution: WB:1:500-1:5000
Relevance	Esterase with broad substrate specificity. Contributes to the inactivation of the neurotransmitter acetylcholine. Can degrade neurotoxic organophosphate esters.
Form	Liquid
Conjugate	Non-conjugated
Storage Buffer	Rabbit IgG in phosphate buffered saline, pH 7.4, 150mM NaCl, 0.02% sodium azide and 50% glycerol.
Purification Method	Affinity-chromatography
Isotype	Rabbit IgG
Clonality	Monoclonal
Product Type	Recombinant Antibody
Immunogen Species	Homo sapiens (Human)
Research Area	Neuroscience; Metabolism; Signal transduction
Gene Names	BCHE
Accession NO.	1E9

Image



Western Blot
 Positive WB detected in: 293 whole cell lysate
 All lanes: BCHE antibody at 1:2000
 Secondary
 Goat polyclonal to rabbit IgG at 1/50000 dilution
 Predicted band size: 69 kDa
 Observed band size: 90 kDa

Description

BCHE is often regarded as a "backup enzyme" in cholinergic neurotransmission as well as a general-purpose bioactive esters metabolizer in the diet. It is expressed during mitosis in early embryonic development and promotes



proliferation prior to differentiation. BCHE functions as an inherent protector from damage caused by toxic compounds before they reach acetylcholinesterase (AChE) in synapses. BCHE regulates plasma ghrelin and shows a considerable impact on food and weight gain, according to the finding of V P Chen et al. Low serum BChE serves as a biochemical marker in clinical situations involving hepatocellular impairment from acute and chronic liver damage, cirrhosis, and liver metastases. High BCHE activity in the blood is linked to abnormal lipid profiles, insulin resistance, and hypertension.

The recombinant BCHE antibody is a monoclonal antibody generated by cloning BCHE antibody genes into plasma vectors and transfecting vector clones into stable cell lines for production. For recombinant antibody generation, mammalian cell lines like CHO cells and HEK293 are commonly used. The recombinant BCHE antibody was purified using Affinity-chromatography. It has verified to detect BCHE protein from Human in the ELISA, WB.