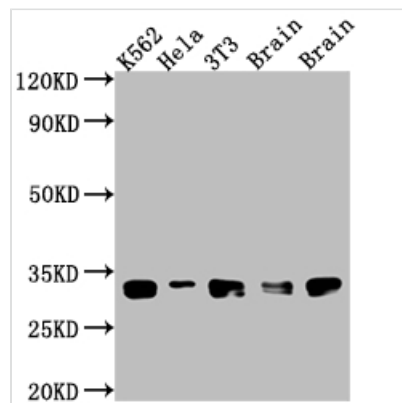




BCL2L1 Antibody

Product Code	CSB-RA247982A0HU
Storage	Upon receipt, store at -20°C or -80°C. Avoid repeated freeze.
Uniprot No.	Q07817
Immunogen	A synthesized peptide derived from human Bcl-XL
Species Reactivity	Human, Mouse, Rat
Tested Applications	ELISA, WB, IHC; Recommended dilution: WB:1:500-1:5000, IHC:1:50-1:200
Relevance	Potent inhibitor of cell death. Inhibits activation of caspases. Appears to regulate cell death by blocking the voltage-dependent anion channel (VDAC) by binding to it and preventing the release of the caspase activator, CYC1, from the mitochondrial membrane. Also acts as a regulator of G2 checkpoint and progression to cytokinesis during mitosis.
Form	Liquid
Conjugate	Non-conjugated
Storage Buffer	Rabbit IgG in phosphate buffered saline, pH 7.4, 150mM NaCl, 0.02% sodium azide and 50% glycerol.
Purification Method	Affinity-chromatography
Isotype	Rabbit IgG
Clonality	Monoclonal
Product Type	Recombinant Antibody
Immunogen Species	Homo sapiens (Human)
Research Area	Cancer; Cell biology; Metabolism; Signal transduction
Gene Names	BCL2L1
Accession NO.	5E9

Image



Western Blot

Positive WB detected in: K562 whole cell lysate, HeLa whole cell lysate, NIH/3T3 whole cell lysate, Rat Brain whole cell lysate, Mouse Brain whole cell lysate

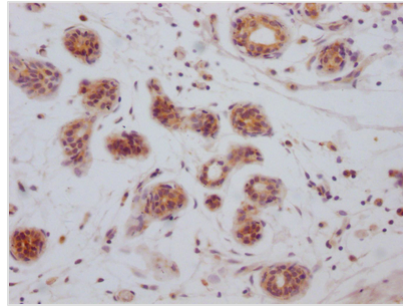
All lanes: Bcl-XL antibody at 1:1000

Secondary

Goat polyclonal to rabbit IgG at 1/50000 dilution

Predicted band size: 27, 19, 26 kDa

Observed band size: 30 kDa



IHC image of CSB-RA247982A0HU diluted at 1:100 and staining in paraffin-embedded human breast cancer performed on a Leica Bond™ system. After dewaxing and hydration, antigen retrieval was mediated by high pressure in a citrate buffer (pH 6.0). Section was blocked with 10% normal goat serum 30min at RT. Then primary antibody (1% BSA) was incubated at 4°C overnight. The primary is detected by a Goat anti-rabbit IgG polymer labeled by HRP and visualized using 0.05% DAB.

Description

BCL2L1 appears to govern cell death by limiting the release of the caspase activator CYC1 from the mitochondrial membrane via binding to the voltage-dependent anion channel (VDAC). During mitosis, it also regulates the G2 checkpoint and progression to cytokinesis. BCL2L1 is a crucial anti-apoptotic protein that increases the survival of differentiated pancreatic cells from human pluripotent stem cells, according to Larry Sai Weng Loo et al.

Recombinant antibody-producing mammalian cell lines were generated by transfecting plasma vectors containing antibody light and heavy chains into mammalian cell lines cultivated in the medium. The recombinant antibody against BCL2L1 was purified from the culture medium using Affinity-chromatography. It has been validated to detect BCL2L1 protein from Human, Mouse, Rat in the ELISA, WB, IHC.