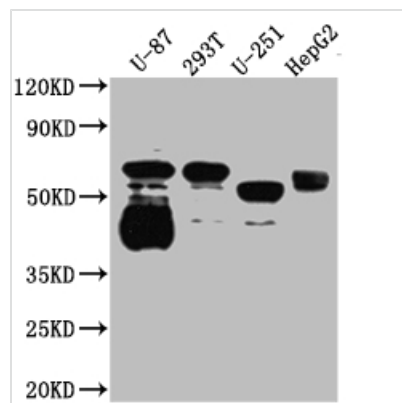




SLC6A4 Antibody

Product Code	CSB-RA224413A0HU
Storage	Upon receipt, store at -20°C or -80°C. Avoid repeated freeze.
Uniprot No.	P31645
Immunogen	A synthesized peptide derived from human Serotonin transporter
Species Reactivity	Human
Tested Applications	ELISA, WB, IHC; Recommended dilution: WB:1:500-1:5000, IHC:1:50-1:200
Relevance	Serotonin transporter whose primary function in the central nervous system involves the regulation of serotonergic signaling via transport of serotonin molecules from the synaptic cleft back into the pre-synaptic terminal for re-utilization. Plays a key role in mediating regulation of the availability of serotonin to other receptors of serotonergic systems. Terminates the action of serotonin and recycles it in a sodium-dependent manner.
Form	Liquid
Conjugate	Non-conjugated
Storage Buffer	Rabbit IgG in phosphate buffered saline, pH 7.4, 150mM NaCl, 0.02% sodium azide and 50% glycerol.
Purification Method	Affinity-chromatography
Isotype	Rabbit IgG
Clonality	Monoclonal
Product Type	Recombinant Antibody
Immunogen Species	Homo sapiens (Human)
Research Area	Neuroscience; Metabolism; Signal transduction
Gene Names	SLC6A4
Accession NO.	9G3

Image



Western Blot

Positive WB detected in: U-87 whole cell lysate, 293T whole cell lysate, U-251 whole cell lysate, HepG2 whole cell lysate

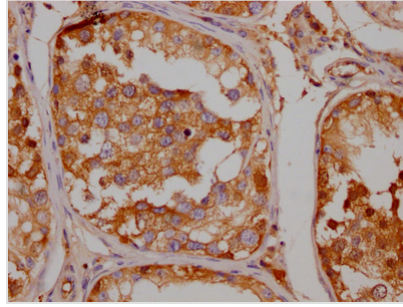
All lanes: Serotonin transporter antibody at 1:1000

Secondary

Goat polyclonal to rabbit IgG at 1/50000 dilution

Predicted band size: 71, 75 kDa

Observed band size: 55 kDa



IHC image of CSB-RA224413A0HU diluted at 1:100 and staining in paraffin-embedded human testis tissue performed on a Leica BondTM system. After dewaxing and hydration, antigen retrieval was mediated by high pressure in a citrate buffer (pH 6.0). Section was blocked with 10% normal goat serum 30min at RT. Then primary antibody (1% BSA) was incubated at 4°C overnight. The primary is detected by a Goat anti-rabbit IgG polymer labeled by HRP and visualized using 0.05% DAB.

Description

SLC6A4 antibody CSB-RA224413A0HU is a recombinant monoclonal antibody belonging to rabbit IgG. Its production procedures include: the acquisition of the SLC6A4 monoclonal antibody using the synthesized peptide derived from the human Serotonin transporter immunizes animals; the determination of DNA sequence of the SLC6A4 monoclonal antibody; the clone of the DNA sequence into the plasmid and subsequent transfection into cell lines for expression. This SLC6A4 antibody underwent purification using affinity chromatography. It has been tested in multiple applications, including ELISA, WB, and IHC. It only recognizes and detects the human SLC6A4 protein.

SLC6A4, also called serotonin transporter (5-HTT), is a type of monoamine transporter protein that transports serotonin from the synaptic cleft back to the presynaptic neuron. SLC6A4 mainly regulates serotonergic neurotransmission and is the active target of selective serotonin reuptake inhibitors (SSRIs). The SLC6A4 protein-mediated serotonin transport ends the action of serotonin and simultaneously enables its reuse by the presynaptic neuron.