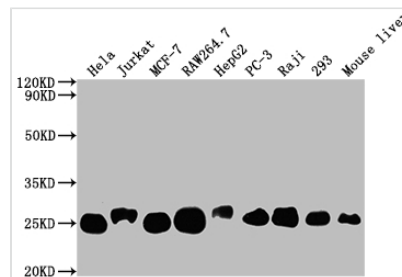




# TPT1 Antibody

<b>Product Code</b>	CSB-RA214107A0HU
<b>Storage</b>	Upon receipt, store at -20°C or -80°C. Avoid repeated freeze.
<b>Uniprot No.</b>	P13693
<b>Immunogen</b>	A synthesized peptide derived from human TCTP
<b>Species Reactivity</b>	Human, Mouse
<b>Tested Applications</b>	ELISA, WB, IHC, IF, IP; Recommended dilution: WB:1:500-1:5000, IHC:1:50-1:200, IF:1:20-1:200, IP:1:200-1:1000
<b>Relevance</b>	Involved in calcium binding and microtubule stabilization.
<b>Form</b>	Liquid
<b>Conjugate</b>	Non-conjugated
<b>Storage Buffer</b>	Rabbit IgG in phosphate buffered saline, pH 7.4, 150mM NaCl, 0.02% sodium azide and 50% glycerol.
<b>Purification Method</b>	Affinity-chromatography
<b>Isotype</b>	Rabbit IgG
<b>Clonality</b>	Monoclonal
<b>Product Type</b>	Recombinant Antibody
<b>Immunogen Species</b>	Homo sapiens (Human)
<b>Research Area</b>	Immunology
<b>Gene Names</b>	TPT1
<b>Accession NO.</b>	10A9

## Image

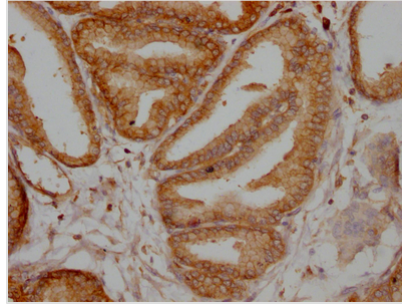


### Western Blot

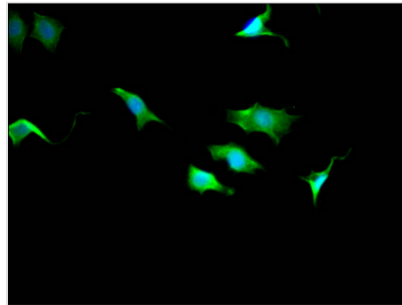
Positive WB detected in: HeLa whole cell lysate, Jurkat whole cell lysate, MCF-7 whole cell lysate, RAW264.7 whole cell lysate, HepG2 whole cell lysate, PC-3 whole cell lysate, Raji whole cell lysate, 293 whole cell lysate, Mouse liver tissue  
All lanes: TPT1 antibody at 1:2000

### Secondary

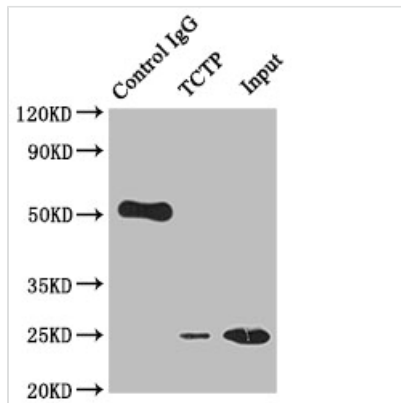
Goat polyclonal to rabbit IgG at 1/50000 dilution  
Predicted band size: 20, 16 kDa  
Observed band size: 25 kDa



IHC image of CSB-RA214107A0HU diluted at 1:100 and staining in paraffin-embedded human prostate tissue performed on a Leica Bond™ system. After dewaxing and hydration, antigen retrieval was mediated by high pressure in a citrate buffer (pH 6.0). Section was blocked with 10% normal goat serum 30min at RT. Then primary antibody (1% BSA) was incubated at 4°C overnight. The primary is detected by a Goat anti-rabbit IgG polymer labeled by HRP and visualized using 0.05% DAB.



Immunofluorescence staining of SY5Y Cells with CSB-RA214107A0HU at 1:50, counter-stained with DAPI. The cells were fixed in 4% formaldehyde, permeated by 0.2% TritonX-100, and blocked in 10% normal Goat Serum. The cells were then incubated with the antibody overnight at 4°C. Nuclear DNA was labeled in blue with DAPI. The secondary antibody was FITC-conjugated AffiniPure Goat Anti-Rabbit IgG (H+L).



Immunoprecipitating TCTP in HeLa whole cell lysate

Lane 1: Rabbit control IgG instead of CSB-RA214107A0HU in HeLa whole cell lysate. For western blotting, a HRP-conjugated Protein G antibody was used as the secondary antibody (1/2000)

Lane 2: CSB-RA214107A0HU(2µg)+ HeLa whole cell lysate(500µg)

Lane 3: HeLa whole cell lysate (10µg)

## Description

TPT1 is a highly conserved protein abundantly present in all eukaryotic organisms, and it plays a role in nearly all of the biological processes that drive growth, stress response, and survival. TPT1 can be secreted to enhance basophil histamine production thus provoking allergic responses and inflammation. TPT1 is typically increased in malignancies, resulting in apoptosis inhibition, metastasis promotion, and anticancer therapy resistance. The pro-survival roles of TPT1 are manifested in multiple relevant aspects of tumorigenesis and malignant transformation, including genome stability, cell cycle, mechanisms of apoptosis, mitotic/meiotic progression, PI3K/AKT/TOR signaling, epithelial-mesenchymal Transformation (EMT), pluripotent stem cell induction and autophagy.

The recombinant TPT1 antibody expression is induced in mammalian cells transfected with a recombinant plasma vector. The recombinant plasma vector was constructed by inserting the gene coding for the antibody against TPT1 into the plasma. The recombinant TPT1 antibody was purified from the cell culture medium using Affinity-chromatography. It can react with samples containing



TPT1 protein from Human, Mouse and has been validated for use in the ELISA, WB, IHC, IF, IP.