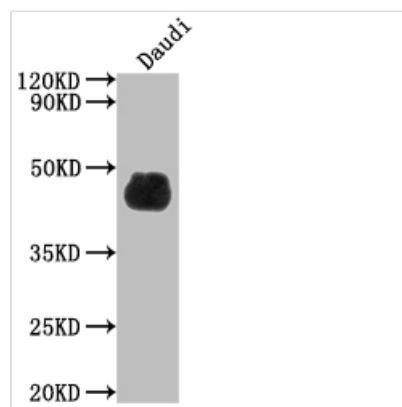




CD48 Antibody

Product Code	CSB-RA178195A0HU
Storage	Upon receipt, store at -20°C or -80°C. Avoid repeated freeze.
Uniprot No.	P09326
Immunogen	A synthesized peptide derived from human CD48
Species Reactivity	Human
Tested Applications	ELISA, WB; Recommended dilution: WB:1:500-1:5000
Relevance	Ligand for CD2. Might facilitate interaction between activated lymphocytes. Probably involved in regulating T-cell activation.
Form	Liquid
Conjugate	Non-conjugated
Storage Buffer	Rabbit IgG in phosphate buffered saline, pH 7.4, 150mM NaCl, 0.02% sodium azide and 50% glycerol.
Purification Method	Affinity-chromatography
Isotype	Rabbit IgG
Clonality	Monoclonal
Product Type	Recombinant Antibody
Immunogen Species	Homo sapiens (Human)
Research Area	Immunology
Gene Names	CD48
Accession NO.	7E1

Image



Western Blot

Positive WB detected in: Daudi whole cell lysate
 All lanes: CD48 antibody at 1:2000
 Secondary
 Goat polyclonal to rabbit IgG at 1/50000 dilution
 Predicted band size: 28, 20 kDa
 Observed band size: 45 kDa

Description

CD48 is an adhesion and costimulatory molecule expressed constitutively on nearly all hematopoietic cells. Via interactions with its ligand CD2, CD48 contributes to synapse organization between T cells and APCs and can enhance TCR signaling. CD48 mediates interactions with T cells and NK cells



by binding to its higher affinity ligand CD244. Co-signaling molecule CD48/CD244 affects the onset of autoimmune diseases by regulating various functions of immune cells and by maintaining or altering the balance of immune responses. CD48 is involved in cell adhesion and costimulation, regulation of target cell lysis by cytolytic cells, as well as detection of microbes through its interaction with the bacterial component FimH.

Recombinant antibody-producing mammalian cell lines were generated by transfecting plasma vectors containing antibody light and heavy chains into mammalian cell lines cultivated in the medium. The recombinant antibody against CD48 was purified from the culture medium using Affinity-chromatography. It has been validated to detect CD48 protein from Human in the ELISA, WB.