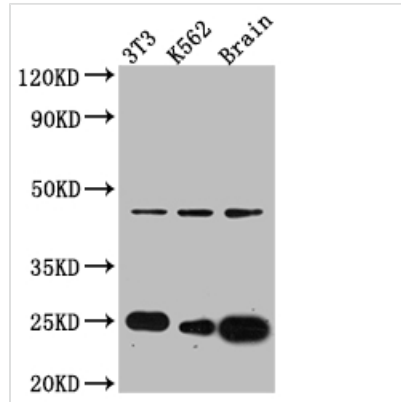




CDC42 Antibody

Product Code	CSB-RA177985A0HU
Storage	Upon receipt, store at -20°C or -80°C. Avoid repeated freeze.
Uniprot No.	P60953
Immunogen	A synthesized peptide derived from human CDC42
Species Reactivity	Human, Mouse
Tested Applications	ELISA, WB, IHC; Recommended dilution: WB:1:500-1:5000, IHC:1:50-1:200
Relevance	Plasma membrane-associated small GTPase which cycles between an active GTP-bound and an inactive GDP-bound state. In active state binds to a variety of effector proteins to regulate cellular responses. Involved in epithelial cell polarization processes. Regulates the bipolar attachment of spindle microtubules to kinetochores before chromosome congression in metaphase. Plays a role in the extension and maintenance of the formation of thin, actin-rich surface projections called filopodia. Mediates CDC42-dependent cell migration. Required for DOCK10-mediated spine formation in Purkinje cells and hippocampal neurons. Facilitates filopodia formation upon DOCK11-activation (By similarity).
Form	Liquid
Conjugate	Non-conjugated
Storage Buffer	Rabbit IgG in phosphate buffered saline, pH 7.4, 150mM NaCl, 0.02% sodium azide and 50% glycerol.
Purification Method	Affinity-chromatography
Isotype	Rabbit IgG
Clonality	Monoclonal
Product Type	Recombinant Antibody
Immunogen Species	Homo sapiens (Human)
Research Area	Epigenetics and Nuclear Signaling; Cancer; Cell biology; Signal transduction
Gene Names	CDC42
Accession NO.	3C3

Image


Western Blot

Positive WB detected in: NIH/3T3 whole cell lysate, K562 whole cell lysate, Mouse Brain whole cell lysate

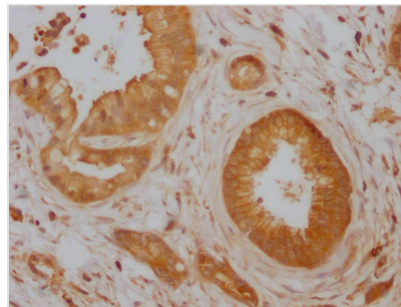
All lanes: CDC42 antibody at 1:1000

Secondary

Goat polyclonal to rabbit IgG at 1/50000 dilution

Predicted band size: 22, 22 kDa

Observed band size: 24 kDa



IHC image of CSB-RA177985A0HU diluted at 1:100 and staining in paraffin-embedded human pancreatic cancer performed on a Leica BondTM system. After dewaxing and hydration, antigen retrieval was mediated by high pressure in a citrate buffer (pH 6.0). Section was blocked with 10% normal goat serum 30min at RT. Then primary antibody (1% BSA) was incubated at 4°C overnight. The primary is detected by a Goat anti-rabbit IgG polymer labeled by HRP and visualized using 0.05% DAB.

Description

CDC42 is a member of the Rho GTPase family, has been characterized by the beginning of a variety of cellular responses including cellular transformation, cell division, cell invasion, migration, invadopodia formation, enzyme activity, filopodia formation, and cell polarity in cells. Earlier in vivo studies in mammals indicated that CDC42 plays an important role in the regulation of the cardiovascular system, immune system, nervous system, and bone modeling. CDC42 is also essential for the development of the pancreas, blood cells, eyes, and skin. Deregulation of CDC42 can alter the normal functioning of the cells, responsible for the initiation of signaling pathways, and is correlated with several pathogenic processes such as cancer.

The recombinant CDC42 antibody was generated in vitro through inserting cloned CDC42 genes into expression vectors. The expression vector was then inserted into a mammalian cell to express this CDC42 antibody. It has been validated in ELISA, WB, IHC. Every step in the production was controlled strictly. You have no worries about the quality.