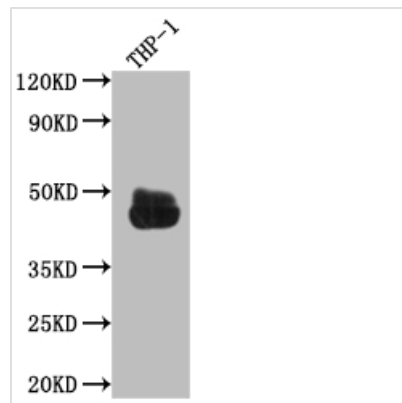




FCGR2A Antibody

Product Code	CSB-RA163349A0HU
Storage	Upon receipt, store at -20°C or -80°C. Avoid repeated freeze.
Uniprot No.	P12318
Immunogen	A synthesized peptide derived from human CD32
Species Reactivity	Human
Tested Applications	ELISA, WB; Recommended dilution: WB:1:500-1:5000
Relevance	Binds to the Fc region of immunoglobulins gamma. Low affinity receptor. By binding to IgG it initiates cellular responses against pathogens and soluble antigens. Promotes phagocytosis of opsonized antigens.
Form	Liquid
Conjugate	Non-conjugated
Storage Buffer	Rabbit IgG in phosphate buffered saline, pH 7.4, 150mM NaCl, 0.02% sodium azide and 50% glycerol.
Purification Method	Affinity-chromatography
Isotype	Rabbit IgG
Clonality	Monoclonal
Product Type	Recombinant Antibody
Immunogen Species	Homo sapiens (Human)
Research Area	Immunology; Stem cells
Gene Names	FCGR2A
Accession NO.	3B6

Image



Western Blot

Positive WB detected in: THP-1 whole cell lysate

All lanes: CD32 antibody at 1:1000

Secondary

Goat polyclonal to rabbit IgG at 1/50000 dilution

Predicted band size: 35, 36 kDa

Observed band size: 45 kDa

Description

FCGR2A, also called CD32, is the Fc γ RII immunoglobulin receptor that controls the adaptive immune response and plays a role in the clearance of immune complexes by macrophages, neutrophils, and platelets. It is mainly involved in



binding with IgG. FCGR2A gene polymorphism was reportedly associated with the susceptibility to inflammation-related diseases, such as atherosclerosis, Takayasu arteritis, systemic lupus erythematosus (SLE), and ulcerative colitis. Alberici et al. reported that FCGR2A was a gene hallmark for the autoimmunity among the patients with chronic periaortitis.

To produce this recombinant FCGR2A antibody, we needed to get the gene sequence of the antibody. B cell screening was used in the process. Once the sequence was obtained, it would lead to the expression plasmids so that the FCGR2A antibody can be expressed in mammalian cells. Moreover, this recombinant FCGR2A antibody was validated in ELISA, WB.