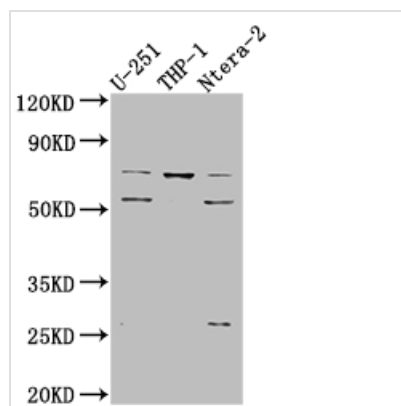




# PTH1R Antibody

<b>Product Code</b>	CSB-RA162005A0HU
<b>Storage</b>	Upon receipt, store at -20°C or -80°C. Avoid repeated freeze.
<b>Uniprot No.</b>	Q03431
<b>Immunogen</b>	A synthesized peptide derived from human Parathyroid Hormone Receptor 1
<b>Species Reactivity</b>	Human
<b>Tested Applications</b>	ELISA, WB; Recommended dilution: WB:1:500-1:5000
<b>Relevance</b>	Receptor for parathyroid hormone and for parathyroid hormone-related peptide. The activity of this receptor is mediated by G proteins which activate adenylyl cyclase and also a phosphatidylinositol-calcium second messenger system.
<b>Form</b>	Liquid
<b>Conjugate</b>	Non-conjugated
<b>Storage Buffer</b>	Rabbit IgG in phosphate buffered saline, pH 7.4, 150mM NaCl, 0.02% sodium azide and 50% glycerol.
<b>Purification Method</b>	Affinity-chromatography
<b>Isotype</b>	Rabbit IgG
<b>Clonality</b>	Monoclonal
<b>Product Type</b>	Recombinant Antibody
<b>Immunogen Species</b>	Homo sapiens (Human)
<b>Research Area</b>	Neuroscience; Signal transduction
<b>Gene Names</b>	PTH1R
<b>Accession NO.</b>	1G7

## Image



### Western Blot

Positive WB detected in: U-251 whole cell lysate, THP-1 whole cell lysate, Ntera-2 whole cell lysate

All lanes: PTH1R antibody at 1:1000

Secondary

Goat polyclonal to rabbit IgG at 1/50000 dilution

Predicted band size: 67 kDa

Observed band size: 72, 55 kDa

## Description

PTH1R is widely expressed during early development but has its highest expression in bone and kidneys. Upon binding with either of its two ligands, PTH and PTHrP, PTH1R is able to activate the  $G\alpha_s$ /adenylyl cyclase/PKA pathway,



Gαq/phospholipase C/PKC pathway, Gα12/13-phospholipase D/RhoA pathway as well as MAPK signaling cascade. PTH1R signaling plays a pivotal role in the regulation of multiple physiological functions including mineral ion homeostasis, skeletal development, bone metabolism, tooth eruption, tooth root formation, alveolar bone regeneration, and periodontium repair.

The generation of this recombinant PTH1R antibody occurs in a series of steps: immunization, splenocytes & PBMC, single B cell sorting, mRNA extraction, RT-PCR & insert vector, expression, ELISA validation. And ELISA, WB was carried out Every step was performed under strict standards to ensure the researchers can have a recombinant PTH1R antibody with premium quality.