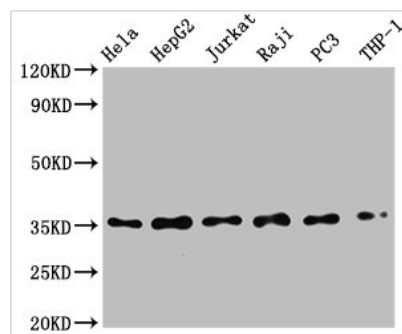




NFKBIA Antibody

Product Code	CSB-RA015761A0HU
Abbreviation	NF-kappa-B inhibitor alpha
Storage	Upon receipt, store at -20°C or -80°C. Avoid repeated freeze.
Uniprot No.	P25963
Immunogen	A synthesized peptide derived from human NFKBIA
Species Reactivity	Human
Tested Applications	ELISA, WB, IHC, IP; Recommended dilution: WB:1:500-1:5000, IHC:1:50-1:200, IP:1:200-1:1000
Relevance	Inhibits the activity of dimeric NF-kappa-B/REL complexes by trapping REL dimers in the cytoplasm through masking of their nuclear localization signals. On cellular stimulation by immune and proinflammatory responses, becomes phosphorylated promoting ubiquitination and degradation, enabling the dimeric RELA to translocate to the nucleus and activate transcription.
Form	Liquid
Conjugate	Non-conjugated
Storage Buffer	Rabbit IgG in phosphate buffered saline , pH 7.4, 150mM NaCl, 0.02% sodium azide and 50% glycerol.
Purification Method	Affinity-chromatography
Isotype	Rabbit IgG
Clonality	Monoclonal
Alias	NF-kappa-B inhibitor alpha, I-kappa-B-alpha, Ikb-alpha, IkappaBalpha, Major histocompatibility complex enhancer-binding protein MAD3, NFKBIA, IKBA, MAD3, NFKBI
Immunogen Species	Homo sapiens (Human)
Research Area	Signal Transduction
Gene Names	NFKBIA
Accession NO.	1E9

Image



Western Blot

Positive WB detected in: HeLa whole cell lysate, HepG2 whole cell lysate, Jurkat whole cell lysate, Raji whole cell lysate, PC3 whole cell lysate, THP-1 whole cell lysate

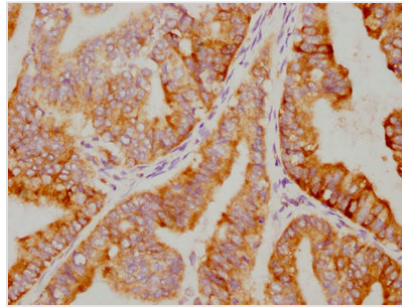
All lanes: NFKBIA antibody at 0.79µg/ml

Secondary

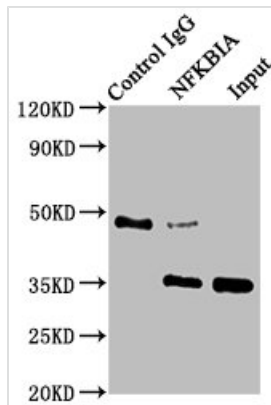
Goat polyclonal to rabbit IgG at 1/50000 dilution

Predicted band size: 36 KDa

Observed band size: 36 KDa



IHC image of CSB-RA015761A0HU diluted at 1:79.75 and staining in paraffin-embedded human endometrial cancer performed on a Leica Bond™ system. After dewaxing and hydration, antigen retrieval was mediated by high pressure in a citrate buffer (pH 6.0). Section was blocked with 10% normal goat serum 30min at RT. Then primary antibody (1% BSA) was incubated at 4°C overnight. The primary is detected by a biotinylated secondary antibody and visualized using an HRP conjugated SP system.



Immunoprecipitating NFKBIA in HepG2 whole cell lysate

Lane 1: Rabbit control IgG instead of CSB-RA015761A0HU in HepG2 whole cell lysate. For western blotting, a HRP-conjugated Protein G antibody was used as the secondary antibody (1/2000)

Lane 2: CSB-RA015761A0HU (3μg) + HepG2 whole cell lysate (500μg)

Lane 3: HepG2 whole cell lysate (20μg)