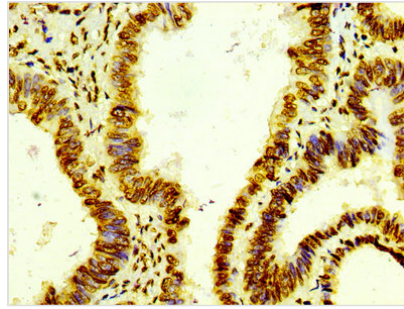




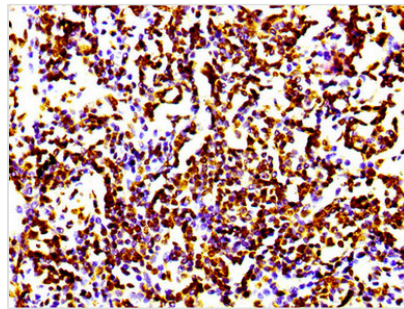
# Histone H4 Antibody

<b>Product Code</b>	CSB-RA010429A0HU
<b>Abbreviation</b>	Histone H4
<b>Storage</b>	Upon receipt, store at -20°C or -80°C. Avoid repeated freeze.
<b>Uniprot No.</b>	P62805
<b>Immunogen</b>	A synthesized peptide
<b>Species Reactivity</b>	Human
<b>Tested Applications</b>	ELISA, IHC, FC; Recommended dilution: IHC:1:50-1:500
<b>Relevance</b>	Core component of nucleosome. Nucleosomes wrap and compact DNA into chromatin, limiting DNA accessibility to the cellular machineries which require DNA as a template. Histones thereby play a central role in transcription regulation, DNA repair, DNA replication and chromosomal stability. DNA accessibility is regulated via a complex set of post-translational modifications of histones, also called histone code, and nucleosome remodeling.
<b>Form</b>	Liquid
<b>Conjugate</b>	Non-conjugated
<b>Storage Buffer</b>	Rabbit IgG in phosphate buffered saline, pH 7.4, 150mM NaCl, 0.02% sodium azide and 50% glycerol.
<b>Purification Method</b>	Affinity-chromatography
<b>Isotype</b>	Rabbit IgG
<b>Clonality</b>	Monoclonal
<b>Alias</b>	Histone H4, HIST1H4A, H4/A, H4FA, AND, HIST1H4B, H4/I, H4FI, AND, HIST1H4C, H4/G, H4FG, AND, HIST1H4D, H4/B, H4FB, AND, HIST1H4E, H4/J, H4FJ, AND, HIST1H4F, H4/C, H4FC, AND, HIST1H4H, H4/H, H4FH, AND, HIST1H4I, H4/M, H4FM, AND, HIST1H4J, H4/E, H4FE, AND, HIST1H4K, H4/D, H4FD, AND, HIST1H4L, H4/K, H4FK, AND, HIST2H4A, H4/N, H4F2, H4FN, HIST2H4, AND, HIST2H4B, H4/O, H4FO, AND, HIST4H4
<b>Immunogen Species</b>	Homo sapiens (Human)
<b>Research Area</b>	Epigenetics and Nuclear Signaling
<b>Gene Names</b>	HIST1H4A
<b>Accession NO.</b>	21E8

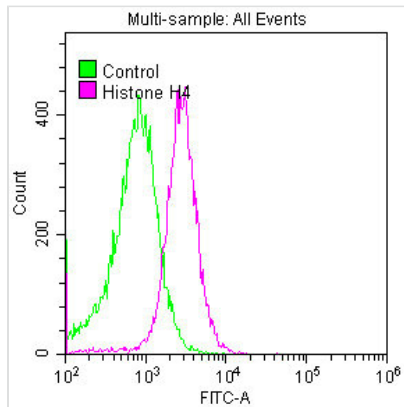
Image



IHC image of CSB-RA010429A0HU diluted at 1:100 and staining in paraffin-embedded human colon cancer performed on a Leica Bond<sup>TM</sup> system. After dewaxing and hydration, antigen retrieval was mediated by high pressure in a citrate buffer (pH 6.0). Section was blocked with 10% normal goat serum 30min at RT. Then primary antibody (1% BSA) was incubated at 4°C overnight. The primary is detected by a biotinylated secondary antibody and visualized using an HRP conjugated SP system.



IHC image of CSB-RA010429A0HU diluted at 1:100 and staining in paraffin-embedded human lung cancer performed on a Leica Bond<sup>TM</sup> system. After dewaxing and hydration, antigen retrieval was mediated by high pressure in a citrate buffer (pH 6.0). Section was blocked with 10% normal goat serum 30min at RT. Then primary antibody (1% BSA) was incubated at 4°C overnight. The primary is detected by a biotinylated secondary antibody and visualized using an HRP conjugated SP system.



Overlay histogram showing HeLa cells stained with CSB-RA010429A0HU (red line) at 1:50. The cells were fixed with 70% Ethylalcohol (18h) and then permeabilized with 0.3% Triton X-100 for 2 min. The cells were then incubated in 1x PBS /10% normal goat serum to block non-specific protein-protein interactions followed by primary antibody for 1 h at 4°C. The secondary antibody used was FITC goat anti-rabbit IgG (H+L) at 1/200 dilution for 1 h at 4°C. Control antibody (green line) was used under the same conditions. Acquisition of >10,000 events was performed.