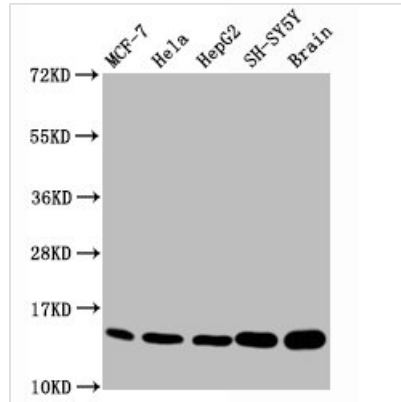




Mono-methyl-Histone H3.1?K18?Antibody

Product Code	CSB-RA010418A18me1HU
Abbreviation	Histone H3.1
Storage	Upon receipt, store at -20°C or -80°C. Avoid repeated freeze.
Uniprot No.	P68431
Immunogen	A synthesized peptide
Species Reactivity	Human
Tested Applications	ELISA, WB, ICC, IF; Recommended dilution: WB:1:500-1:2000, ICC:1:50-1:500, IF:1:30-1:200
Relevance	Core component of nucleosome. Nucleosomes wrap and compact DNA into chromatin, limiting DNA accessibility to the cellular machineries which require DNA as a template. Histones thereby play a central role in transcription regulation, DNA repair, DNA replication and chromosomal stability. DNA accessibility is regulated via a complex set of post-translational modifications of histones, also called histone code, and nucleosome remodeling.
Form	Liquid
Conjugate	Non-conjugated
Storage Buffer	Rabbit IgG in phosphate buffered saline, pH 7.4, 150mM NaCl, 0.02% sodium azide and 50% glycerol.
Purification Method	Affinity-chromatography
Isotype	Rabbit IgG
Clonality	Monoclonal
Alias	Histone H3.1, Histone H3/a, Histone H3/b, Histone H3/c, Histone H3/d, Histone H3/f, Histone H3/h, Histone H3/i, Histone H3/j, Histone H3/k, Histone H3/l, HIST1H3A, H3FA, AND, HIST1H3B, H3FL, AND, HIST1H3C, H3FC, AND, HIST1H3D, H3FB, AND, HIST1H3E, H3FD, AND, HIST1H3F, H3FI, AND, HIST1H3G, H3FH, AND, HIST1H3H, H3FK, AND, HIST1H3I, H3FF, AND, HIST1H3J, H3FJ
Immunogen Species	Homo sapiens (Human)
Research Area	Epigenetics and Nuclear Signaling
Gene Names	HIST1H3A
Accession NO.	2B5
Image	


Western Blot

Positive WB detected in MCF-7 whole cell lysate?Hela whole cell lysate?HepG2 whole cell lysate?SH-SY5Y whole cell lysate,Rat brain tissue

All lanes Mono-methyl-Histone

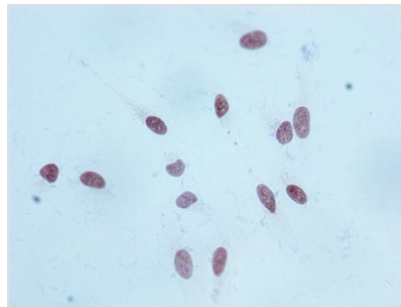
H3.1(K18)antibody at 0.7 μ g/ml

Secondary

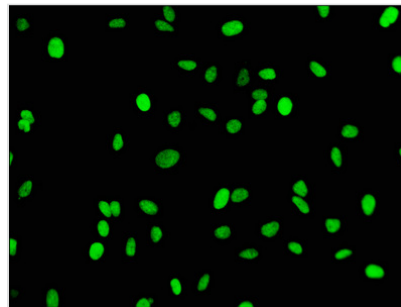
Goat polyclonal to rabbit IgG at 1/50000 dilution

Predicted band size: 15 KDa

Observed band size: 15 KDa


Immunocytochemistry analysis of CSB-

RA010418A18me1HU diluted at 1:100 and staining in HeLa cells performed on a Leica BondTM system. After dewaxing and hydration, antigen retrieval was mediated by high pressure in a citrate buffer (pH 6.0). Section was blocked with 10% normal goat serum 30min at RT. Then primary antibody (1% BSA) was incubated at 4°C overnight. The primary is detected by a biotinylated secondary antibody and visualized using an HRP conjugated SP system.


Immunofluorescence staining of HeLa cells with

CSB-RA010418A18me1HU at 1:43,counter-stained with DAPI. The cells were fixed in 4% formaldehyde, permeabilized using 0.2% Triton X-100 and blocked in 10% normal Goat Serum. The cells were then incubated with the antibody overnight at 4°C.The secondary antibody was Alexa Fluor 488-conjugated AffiniPure Goat Anti-Rabbit IgG (H+L).