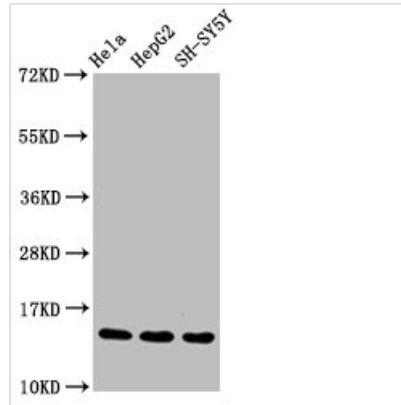




# Mono-methyl-Histone H3.1?R17?Antibody

<b>Product Code</b>	CSB-RA010418A17me1HU
<b>Abbreviation</b>	Histone H3.1
<b>Storage</b>	Upon receipt, store at -20°C or -80°C. Avoid repeated freeze.
<b>Uniprot No.</b>	P68431
<b>Immunogen</b>	A synthesized peptide
<b>Species Reactivity</b>	Human
<b>Tested Applications</b>	ELISA, WB, ICC, IF; Recommended dilution: WB:1:500-1:2000, ICC:1:50-1:500, IF:1:30-1:200
<b>Relevance</b>	Core component of nucleosome. Nucleosomes wrap and compact DNA into chromatin, limiting DNA accessibility to the cellular machineries which require DNA as a template. Histones thereby play a central role in transcription regulation, DNA repair, DNA replication and chromosomal stability. DNA accessibility is regulated via a complex set of post-translational modifications of histones, also called histone code, and nucleosome remodeling.
<b>Form</b>	Liquid
<b>Conjugate</b>	Non-conjugated
<b>Storage Buffer</b>	Rabbit IgG in phosphate buffered saline, pH 7.4, 150mM NaCl, 0.02% sodium azide and 50% glycerol.
<b>Purification Method</b>	Affinity-chromatography
<b>Isotype</b>	Rabbit IgG
<b>Clonality</b>	Monoclonal
<b>Alias</b>	Histone H3.1, Histone H3/a, Histone H3/b, Histone H3/c, Histone H3/d, Histone H3/f, Histone H3/h, Histone H3/i, Histone H3/j, Histone H3/k, Histone H3/l, HIST1H3A, H3FA, AND, HIST1H3B, H3FL, AND, HIST1H3C, H3FC, AND, HIST1H3D, H3FB, AND, HIST1H3E, H3FD, AND, HIST1H3F, H3FI, AND, HIST1H3G, H3FH, AND, HIST1H3H, H3FK, AND, HIST1H3I, H3FF, AND, HIST1H3J, H3FJ
<b>Immunogen Species</b>	Homo sapiens (Human)
<b>Research Area</b>	Epigenetics and Nuclear Signaling
<b>Gene Names</b>	HIST1H3A
<b>Accession NO.</b>	3E10
<b>Image</b>	



**Western Blot**

Positive WB detected in HeLa whole cell lysate?HepG2 whole cell lysate?SH-SY5Y whole cell lysate

All lanes Mono-methyl-Histone

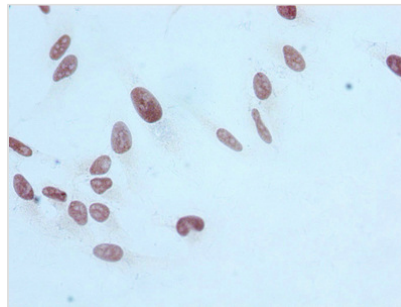
H3.1(R17)antibody at 1.55µg/ml

Secondary

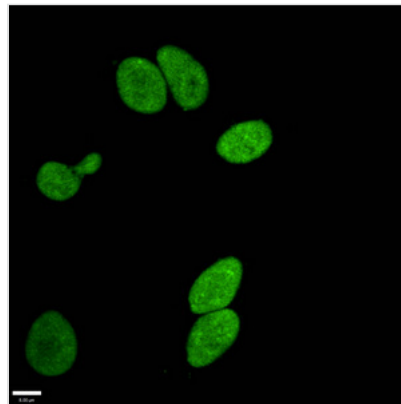
Goat polyclonal to rabbit IgG at 1/50000 dilution

Predicted band size: 15 KDa

Observed band size: 15 KDa



Immunocytochemistry analysis of CSB-RA010418A17me1HU diluted at 1:100 and staining in HeLa cells performed on a Leica Bond™ system. After dewaxing and hydration, antigen retrieval was mediated by high pressure in a citrate buffer (pH 6.0). Section was blocked with 10% normal goat serum 30min at RT. Then primary antibody (1% BSA) was incubated at 4°C overnight. The primary is detected by a biotinylated secondary antibody and visualized using an HRP conjugated SP system.



Immunofluorescence staining of HeLa cells withCSB-RA010418A17me1HU at 1:96,counter-stained with DAPI. The cells were fixed in 4% formaldehyde, permeabilized using 0.2% Triton X-100 and blocked in 10% normal Goat Serum. The cells were then incubated with the antibody overnight at 4°C.The secondary antibody was Alexa Fluor 488-conjugated AffiniPure Goat Anti-Rabbit IgG (H+L).