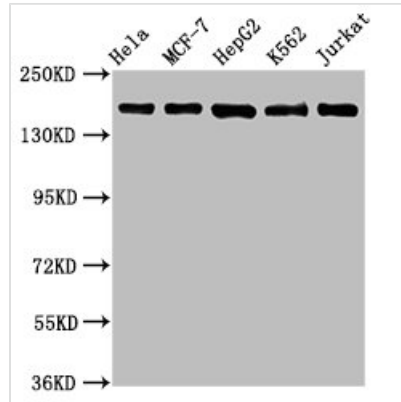




HDAC6 Antibody

Product Code	CSB-RA010242A0HU
Abbreviation	Histone deacetylase 6
Storage	Upon receipt, store at -20°C or -80°C. Avoid repeated freeze.
Uniprot No.	Q9UBN7
Immunogen	A synthesized peptide derived from human HDAC6
Species Reactivity	Human
Tested Applications	ELISA, WB, IHC, IP; Recommended dilution: WB:1:500-1:5000, IHC:1:50-1:200, IP:1:200-1:1000
Relevance	Responsible for the deacetylation of lysine residues on the N-terminal part of the core histones (H2A, H2B, H3 and H4). Histone deacetylation gives a tag for epigenetic repression and plays an important role in transcriptional regulation, cell cycle progression and developmental events. Histone deacetylases act via the formation of large multiprotein complexes (By similarity). Plays a central role in microtubule-dependent cell motility via deacetylation of tubulin. Involved in the MTA1-mediated epigenetic regulation of ESR1 expression in breast cancer.
Form	Liquid
Conjugate	Non-conjugated
Storage Buffer	Rabbit IgG in phosphate buffered saline , pH 7.4, 150mM NaCl, 0.02% sodium azide and 50% glycerol.
Purification Method	Affinity-chromatography
Isotype	Rabbit IgG
Clonality	Monoclonal
Alias	Histone deacetylase 6, HD6, HDAC6, KIAA0901, JM21
Immunogen Species	Homo sapiens (Human)
Research Area	Epigenetics and Nuclear Signaling
Gene Names	HDAC6
Accession NO.	2H12

Image


Western Blot

Positive WB detected in: HeLa whole cell lysate, MCF-7 whole cell lysate, HepG2 whole cell lysate, K562 whole cell lysate, Jurkat whole cell lysate

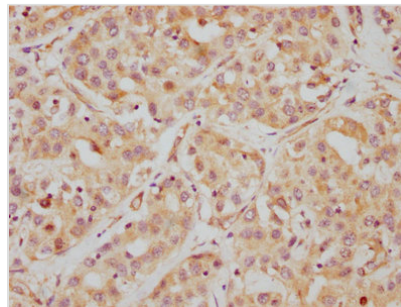
All lanes: HDAC6 antibody at 1.1 μ g/ml

Secondary

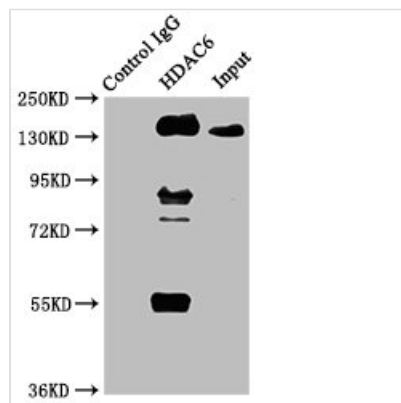
Goat polyclonal to rabbit IgG at 1/50000 dilution

Predicted band size: 132, 115 KDa

Observed band size: 160 KDa



IHC image of CSB-RA010242A0HU diluted at 1:112.5 and staining in paraffin-embedded human liver cancer performed on a Leica BondTM system. After dewaxing and hydration, antigen retrieval was mediated by high pressure in a citrate buffer (pH 6.0). Section was blocked with 10% normal goat serum 30min at RT. Then primary antibody (1% BSA) was incubated at 4 $^{\circ}$ C overnight. The primary is detected by a biotinylated secondary antibody and visualized using an HRP conjugated SP system.



Immunoprecipitating HDAC6 in HepG2 whole cell lysate

Lane 1: Rabbit control IgG instead of CSB-RA010242A0HU in HepG2 whole cell lysate. For western blotting, a HRP-conjugated Protein G antibody was used as the secondary antibody (1/2000)

Lane 2: CSB-RA010242A0HU (3 μ g) + HepG2 whole cell lysate (500 μ g)

Lane 3: HepG2 whole cell lysate (20 μ g)

Description

HDAC6 antibody CSB-RA010242A0HU is a recombinant monoclonal antibody belonging to rabbit IgG. Its production procedures include: the acquisition of the HDAC6 monoclonal antibody using the synthesized peptide derived from the human HDAC6 immunizes animals; the determination of DNA sequence of the HDAC6 monoclonal antibody; the clone of the DNA sequence into the plasmid and subsequent transfection into cell lines for expression. This HDAC6 antibody underwent purification using affinity-chromatography. It has been tested in multiple applications, including ELISA, WB, IHC, and IP. It is reactive with the human HDAC6 protein.

Its target protein HDAC6 is a unique histone deacetylase that deacetylates histones and inhibits transcription of related genes. Endogenous HDAC6 is localized to the cytoplasm and becomes a tubulin deacetylase when binding to microtubules. HDAC6 contains a zinc finger domain, which may be involved in the regulation of ubiquitination degradation.