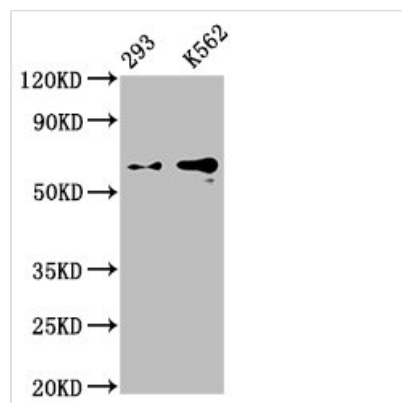




GPC3 Antibody

Product Code	CSB-RA009705A0HU
Abbreviation	Glypican-3
Storage	Upon receipt, store at -20°C or -80°C. Avoid repeated freeze.
Uniprot No.	P51654
Immunogen	A synthesized peptide derived from human GPC3
Species Reactivity	Human
Tested Applications	ELISA, WB, IF; Recommended dilution: WB:1:500-1:5000, IF:1:20-1:200
Relevance	Cell surface proteoglycan that bears heparan sulfate. Inhibits the dipeptidyl peptidase activity of DPP4. May be involved in the suppression/modulation of growth in the predominantly mesodermal tissues and organs. May play a role in the modulation of IGF2 interactions with its receptor and thereby modulate its function. May regulate growth and tumor predisposition.
Form	Liquid
Conjugate	Non-conjugated
Storage Buffer	Rabbit IgG in phosphate buffered saline , pH 7.4, 150mM NaCl, 0.02% sodium azide and 50% glycerol.
Purification Method	Affinity-chromatography
Isotype	Rabbit IgG
Clonality	Monoclonal
Alias	Glypican-3, GTR2-2, Intestinal protein OCI-5, MXR7, Secreted glypican-3, GPC3, OCI5
Immunogen Species	Homo sapiens (Human)
Research Area	Stem Cells
Gene Names	GPC3
Accession NO.	4H11

Image



Western Blot

Positive WB detected in: 293 whole cell lysate, K562 whole cell lysate

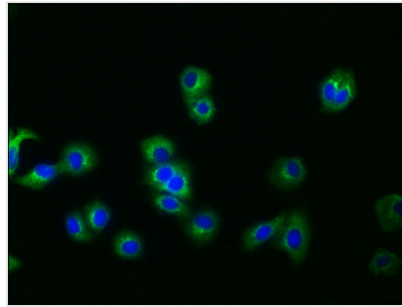
All lanes: GPC3 antibody at 0.9µg/ml

Secondary

Goat polyclonal to rabbit IgG at 1/50000 dilution

Predicted band size: 66, 60, 69 KDa

Observed band size: 66 KDa



Immunofluorescence staining of HepG2 cells with CSB-RA009705A0HU at 1:30, counter-stained with DAPI. The cells were fixed in 4% formaldehyde, permeabilized using 0.2% Triton X-100 and blocked in 10% normal Goat Serum. The cells were then incubated with the antibody overnight at 4°C. The secondary antibody was Alexa Fluor 488-conjugated AffiniPure Goat Anti-Rabbit IgG (H+L).

Description

The GPC3 recombinant monoclonal antibody is prepared by cloning the gene fragment encoding human GPC3 protein into the expression vector and subsequently transfecting clones into the cell line for in vitro expression. This GPC3 antibody can detect the endogenous content of the human GPC3 protein. It is purified by the affinity chromatography method. And it has been validated in ELISA, WB, and IF applications.

GPC3 is a cell-surface glycoprotein that exerts important functions in cellular signaling including cell growth, embryogenesis, and differentiation. GPC3 has been associated with hepatocellular carcinoma and a few other cancers.