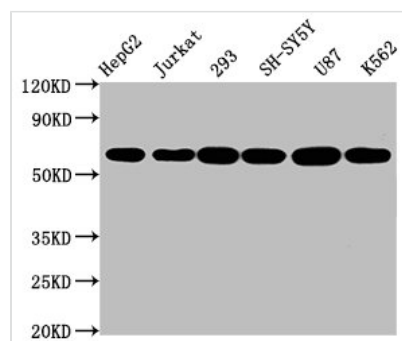




CYP19A1 Antibody

Product Code	CSB-RA006394A0HU
Abbreviation	Aromatase
Storage	Upon receipt, store at -20°C or -80°C. Avoid repeated freeze.
Uniprot No.	P11511
Immunogen	A synthesized peptide derived from human CYP19A1
Species Reactivity	Human
Tested Applications	ELISA, WB, IHC, IF; Recommended dilution: WB:1:500-1:5000, IHC:1:50-1:200, IF:1:20-1:200
Relevance	Catalyzes the formation of aromatic C18 estrogens from C19 androgens.
Form	Liquid
Conjugate	Non-conjugated
Storage Buffer	Rabbit IgG in phosphate buffered saline , pH 7.4, 150mM NaCl, 0.02% sodium azide and 50% glycerol.
Purification Method	Affinity-chromatography
Isotype	Rabbit IgG
Clonality	Monoclonal
Alias	Aromatase, CYPXIX, Cytochrome P-450AROM, Cytochrome P450 19A1, Estrogen synthase, CYP19A1, ARO1, CYAR, CYP19
Immunogen Species	Homo sapiens (Human)
Research Area	Cell Biology
Gene Names	CYP19A1
Accession NO.	1H1

Image



Western Blot

Positive WB detected in: HepG2 whole cell lysate, Jurkat whole cell lysate, 293 whole cell lysate, SH-SY5Y whole cell lysate, U87 whole cell lysate, K562 whole cell lysate

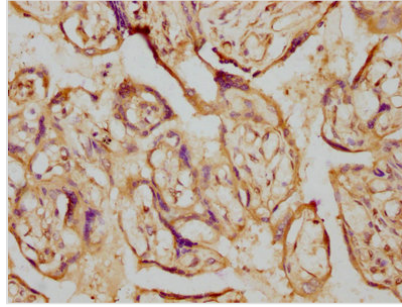
All lanes: CYP19A1 antibody at 2.3µg/ml

Secondary

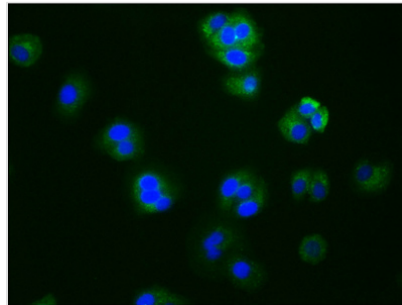
Goat polyclonal to rabbit IgG at 1/50000 dilution

Predicted band size: 58, 25 KDa

Observed band size: 58 KDa



IHC image of CSB-RA006394A0HU diluted at 1:230 and staining in paraffin-embedded human placenta tissue performed on a Leica Bond™ system. After dewaxing and hydration, antigen retrieval was mediated by high pressure in a citrate buffer (pH 6.0). Section was blocked with 10% normal goat serum 30min at RT. Then primary antibody (1% BSA) was incubated at 4°C overnight. The primary is detected by a biotinylated secondary antibody and visualized using an HRP conjugated SP system.



Immunofluorescence staining of HepG2 cells with CSB-RA006394A0HU at 1:76, counter-stained with DAPI. The cells were fixed in 4% formaldehyde, permeabilized using 0.2% Triton X-100 and blocked in 10% normal Goat Serum. The cells were then incubated with the antibody overnight at 4°C. The secondary antibody was Alexa Fluor 488-conjugated AffiniPure Goat Anti-Rabbit IgG (H+L).

Description

The CYP19A1 antibody is a recombinant monoclonal antibody matched isotype control by rabbit IgG. Its production process includes the cloning of the human CYP19A1 DNA gene into the vector and the transfection of the clones into the cell line for in vitro expression. This CYP19A1 antibody can recognize human CYP19A1 protein. It has been purified using affinity-chromatography and been tested for use in ELISA, WB, IHC, and IF applications.

CYP19A1, also called aromatase, a steroidogenic enzyme required for estrogen biosynthesis from androgen precursors in the ovary and extragonadal tissues. It is also a very effective therapeutic target for the treatment of endocrine-responsive breast cancer.