

Anti-PKC α

(protein kinase C α)

Product Information:

1)	Catalog #:	MSFR104720
	Item Name:	PKC α pAb (Rb) 20ug
	Size :	20 μ g (affinity-purified with antigen polypeptide)
	Species :	Rabbit
	Product Code :	PKC α -Rb-Af640
	RRID :	AB_2571819
2)	Catalog #:	MSFR104730
	Item Name:	PKC α pAb (Rb) 50ug
	Size :	50 μ g (affinity-purified with antigen polypeptide)
	Species :	Rabbit
	Product Code :	PKC α -Rb-Af640
	RRID :	AB_2571819
3)	Catalog #:	MSFR104740
	Item Name:	PKC α pAb (Go) 20ug
	Size :	20 μ g (affinity-purified with antigen polypeptide)
	Species :	Goat
	Product Code :	PKC α -Go-Af850
	RRID :	AB_2571820
4)	Catalog #:	MSFR104750
	Item Name:	PKC α pAb (Go) 50ug
	Size :	50 μ g (affinity-purified with antigen polypeptide)
	Species :	Goat
	Product Code :	PKC α -Go-Af850
	RRID :	AB_2571820
5)	Catalog #:	MSFR104760
	Item Name:	PKC α pAb (GP) 20ug
	Size :	20 μ g (affinity-purified with antigen polypeptide)
	Species :	Guinea pig
	Product Code :	PKC α -GP-Af870
	RRID :	AB_2571821
6)	Catalog #:	MSFR104770
	Item Name:	PKC α pAb (GP) 50ug
	Size :	50 μ g (affinity-purified with antigen polypeptide)
	Species :	Guinea pig
	Product Code :	PKC α -GP-Af870
	RRID :	AB_2571821

Formulation : Liquid ; 200 μ g/ml in PBS with 0.05% NaN₃.

(affinity-purified with antigen polypeptide)

Storage : Store at cool temp (2-10°C).

The antibody can be stored at 2-10°C. The antibody can be also aliquoted and stored at -80°C for long-term storage. Avoid repeated freeze-thawing. Non-hazardous. No MSDS required.

Species : rabbit / guinea pig / goat, polyclonal

ご注意 : 本商品には 0.1 % 未満のアジ化ナトリウムが入っています。誤って目や口に入ったり、皮膚に付着した場合は大量の水で洗い流してください。

Distributor : NITTOBO MEDICAL CO., LTD

Manufacture : FRONTIER INSTITUTE CO., LTD

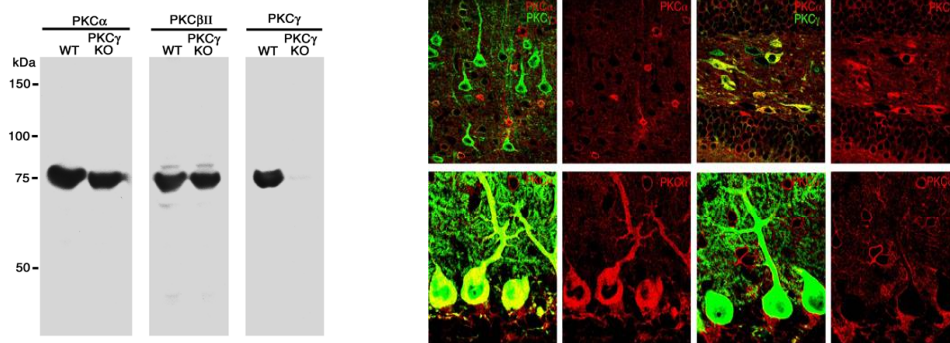
TEL : +81-(0)3-4582-5451

email : nmd-tokuhan@nittobogrp.com

Antigen : mouse PKC α , 660-672 aa (M25811)

Specificity : mouse (others not tested)

Immunoblot detects a single band at 75 kDa.



Applications : In general, affinity-purified antibody is used at around 1 microgram/ml for immunoblot and immunohistochemistry.

The most appropriate concentration should be determined by users, because it depends on contents in given cells, tissues and organs.

Research Use : For research use only, not for use in diagnostic procedures.

Remarks : Rabbit, guinea pig, and goat PKC α antibodies are equal in specificity and titer.

Reference : 1) Nakano T, Hozumi Y, Ali H, Saino-Saito S, Kamii H, Sato S, Kayama T, Watanabe M, Kondo H, Goto K. Diacylglycerol kinase zeta is involved in the process of cerebral infarction. (2006) *Eur. J. Neurosci.* 23:1427-35.

ご注意 : 本商品には 0.1 % 未満のアジ化ナトリウムが入っています。 誤って目や口に入ったり、皮膚に付着した場合は大量の水で洗い流してください。

Distributor : NITTOBO MEDICAL CO., LTD
TEL : +81-(0)3-4582-5451
email : nmd-tokuhan@nittobogrp.com

Manufacture : FRONTIER INSTITUTE CO., LTD