

Anti-MCT1

(monocarboxylate transporter-1 or Slc16a1)

Product Information:

1)	Catalog #:	MSFR103830
	Item Name:	MCT1 pAb (Rb) 20ug
	Size :	20μg (affinity-purified with antigen polypeptide)
	Species :	Rabbit
	Product Code :	MCT1-Rb-Af900
	RRID :	AB_2571794
2)	Catalog #:	MSFR103840
	Item Name:	MCT1 pAb (Rb) 50ug
	Size :	50μg (affinity-purified with antigen polypeptide)
	Species :	Rabbit
	Product Code :	MCT1-Rb-Af900
	RRID :	AB_2571794
3)	Catalog #:	MSFR103850
	Item Name:	MCT1 pAb (GP) 20ug
	Size :	20μg (affinity-purified with antigen polypeptide)
	Species :	Guinea pig
	Product Code :	MCT1-GP-Af950
	RRID :	AB_2571795
4)	Catalog #:	MSFR103860
	Item Name:	MCT1 pAb (GP) 50ug
	Size :	50μg (affinity-purified with antigen polypeptide)
	Species :	Guinea pig
	Product Code :	MCT1-GP-Af950
	RRID :	AB_2571795

Formulation : Liquid ; 200 μg/ml in PBS with 0.05% NaN₃.

Storage : Store at cool temp. (2-10°C)

The antibody can be stored at 2-10°C.

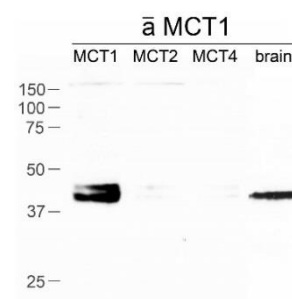
The antibody can be also aliquoted and stored at -80°C for long-term storage. Avoid repeated freeze-thawing. Non-hazardous. No MSDS required.

Species : rabbit, polyclonal 469-493aa (NM_009196)

Antigen : mouse MCT1 477-493aa (NM_009196.3)

Specificity : mouse (others not tested)

The specificity of MCT1 antibody was confirmed by selective detection of 40kDa band in HEK293T lysates transfected with MCT1, but not MCT2 or MCT4 and in brain homogenates. In immunohistochemistry, MCT1 is detected in a cell-type dependent



ご注意：本商品には 0.1 % 未満のアジ化ナトリウムが入っています。誤って目や口に入ったり、皮膚に付着した場合は大量の水で洗い流してください。

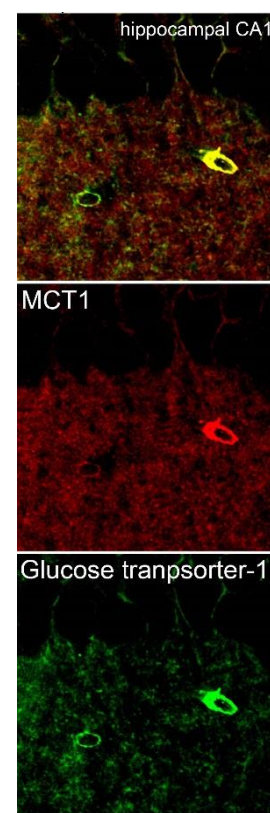
manner, for example, capillary in the brain and spermatogonia in the testis. MCT1 is well overlapped with glucose transporter-1 in the adult brain.

Applications : In general, affinity-purified antibody is used at around 1 microgram/ml for immunoblot and immunohistochemistry. The most appropriate concentration should be determined by users, because it depends on contents in given cells, tissues and organs.

Research Use : For research use only, not for use in diagnostic procedures.

Remarks :

Reference : 1) Kaji I, Iwanaga T, Watanabe M, Guth P, Engel E, Kaunitz J, Akiba Y: SCFA transport in rat duodenum. **Am J Physiol Gastrointest Liver Physiol**, 308:G188-197, 2015.



ご注意：本商品には 0.1 % 未満のアジ化ナトリウムが入っています。誤って目や口に入ったり、皮膚に付着した場合は大量の水で洗い流してください。

Distributor : NITTOBO MEDICAL CO., LTD
TEL : +81-(0)3-4582-5451
email : nmd-tokuhan@nittobogrp.com

Manufacture : FRONTIER INSTITUTE CO., LTD