

Anti-GLUT1 (Slc2a1)

(Glucose transporter 1)

Product Information:

1)	Catalog #:	MSFR102820
	Item Name:	GLUT1 (Slc2a1) pAb (Rb) 20ug
	Size :	20µg (affinity-purified with antigen polypeptide)
	Species :	Rabbit
	Product Code :	GLUT1-Rb-Af1020
	RRID :	AB_2571769
2)	Catalog #:	MSFR102830
	Item Name:	GLUT1 (Slc2a1) pAb (Rb) 50ug
	Size :	50µg (affinity-purified with antigen polypeptide)
	Species :	Rabbit
	Product Code :	GLUT1-Rb-Af1020
	RRID :	AB_2571769
3)	Catalog #:	MSFR102840
	Item Name:	GLUT1 (Slc2a1) pAb (GP) 20ug
	Size :	20µg (affinity-purified with antigen polypeptide)
	Species :	Guinea pig
	Product Code :	GLUT1-GP-Af610
	RRID :	AB_2571770
4)	Catalog #:	MSFR102850
	Item Name:	GLUT1 (Slc2a1) pAb (GP) 50ug
	Size :	50µg (affinity-purified with antigen polypeptide)
	Species :	Guinea pig
	Product Code :	GLUT1-GP-Af610
	RRID :	AB_2571770
5)	Catalog #:	MSFR107490
	Item Name:	GLUT1 (Slc2a1) pAb (Go) 20ug
	Size :	20µg (affinity-purified with antigen polypeptide)
	Species :	Goat
	Product Code :	GLUT1-Go-Af600
	RRID :	AB_2920797
6)	Catalog #:	MSFR107500
	Item Name:	GLUT1 (Slc2a1) pAb (Go) 50ug
	Size :	50µg (affinity-purified with antigen polypeptide)
	Species :	Goat
	Product Code :	GLUT1-Go-Af600
	RRID :	AB_2920797

Formulation : Liquid ; 200 µg/ml in PBS with 0.05% NaN₃.

Storage : Store at cool temp. (2-10°C)

The antibody can be stored at 2-10°C. The antibody can be also aliquoted and stored at -80°C for long-term storage. Avoid repeated freeze-thawing. Non-hazardous. No MSDS required.

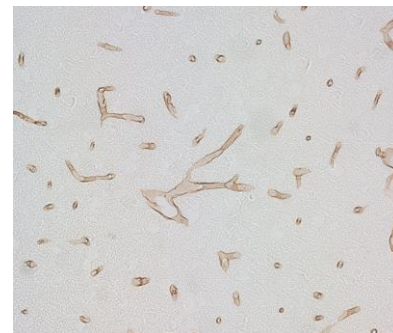
Species : rabbit / guinea pig , polyclonal

ご注意 : 本商品には 0.1 % 未満のアジ化ナトリウムが入っています。誤って目や口に入ったり、皮膚に付着した場合は大量の水で洗い流してください。

Antigen : mouse Glucose transporter 1,
C-terminal 33aa (M023384)

Specificity : mouse (others not tested)

Immunoblot detects a single protein band at 40 kDa. In the brain, GLUT1 is expressed mainly in capillary, and weakly in astrocytes. No cross-reactivity to GLUT3 is confirmed in HEK cells transfected with GLUT1 or GLUT3 cDNA.



Applications : In general, affinity-purified antibody is used at around 1 microgram/ml for immunoblot and immunohistochemistry. The most appropriate concentration should be determined by users, because it depends on contents in given cells, tissues and organs.

Research Use : For research use only, not for use in diagnostic procedures.

Remarks :

Reference : 1) Sakai, K., Shimizu, H., Koike, T., Furuya S., Watanabe, M. (2003) Neutral amino acid transporter ASCT1 is preferentially expressed in L-Ser-synthetic/storing glial cells in the mouse with transient expression in developing capillaries. **J. Neurosci.** 23:550-560.

2) Tachikawa, M., Fukaya, M., Terasaki, T., Ohtsuki, S., Watanabe, M. (2004) Distinct cellular expressions of creatine synthetic enzyme GAMT and creatine kinases uCK-Mi and CK-B suggest novel neuron-glia relationship for brain energy homeostasis. **Eur. J. Neurosci.**, 20:144-160.

ご注意 : 本商品には 0.1 % 未満のアジ化ナトリウムが入っています。 誤って目や口に入ったり、皮膚に付着した場合は大量の水で洗い流してください。