

Anti-GluD2 -C (GluR δ 2)

(glutamate receptor subunit δ 2)

Product Information:

1)	Catalog #:	MSFR102560
	Item Name:	GluD2-C (GluR δ 2,897-934) pAb (Rb) 20ug
	Size :	20 μ g (affinity-purified with antigen polypeptide)
	Species :	Rabbit
	Product Code :	GluD2C-Rb-Af1200
	RRID :	AB_2571601
2)	Catalog #:	MSFR102570
	Item Name:	GluD2-C (GluR δ 2,897-934) pAb (Rb) 50ug
	Size :	50 μ g (affinity-purified with antigen polypeptide)
	Species :	Rabbit
	Product Code :	GluD2C-Rb-Af1200
	RRID :	AB_2571601
3)	Catalog #:	MSFR102580
	Item Name:	GluD2-C (GluR δ 2,897-934) pAb (Go) 20ug
	Size :	20 μ g (affinity-purified with antigen polypeptide)
	Species :	Goat
	Product Code :	GluD2C-Go-Af1120
	RRID :	AB_2571602
4)	Catalog #:	MSFR102590
	Item Name:	GluD2-C (GluR δ 2,897-934) pAb (Go) 50ug
	Size :	50 μ g (affinity-purified with antigen polypeptide)
	Species :	Goat
	Product Code :	GluD2C-Go-Af1120
	RRID :	AB_2571602
5)	Catalog #:	MSFR102600
	Item Name:	GluD2-C (GluR δ 2,897-934) pAb (GP) 20ug
	Size :	20 μ g (affinity-purified with antigen polypeptide)
	Species :	Guinea pig
	Product Code :	GluD2C-GP-Af1090
	RRID :	AB_2571603
6)	Catalog #:	MSFR102610
	Item Name:	GluD2-C (GluR δ 2,897-934) pAb (GP) 50ug
	Size :	50 μ g (affinity-purified with antigen polypeptide)
	Species :	Guinea pig
	Product Code :	GluD2C-GP-Af1090
	RRID :	AB_2571603
7)	Catalog #:	MSFR102540
	Item Name:	GluD2-C (GluR δ 2,852-931) pAb (Rb) 20ug
	Size :	20 μ g (affinity-purified with antigen polypeptide)
	Species :	Rabbit
	Product Code :	GluRd2C-Rb-Af500
	RRID :	AB_2571600
8)	Catalog #:	MSFR102550
	Item Name:	GluD2-C (GluR δ 2,852-931) pAb (Rb) 50ug
	Size :	50 μ g (affinity-purified with antigen polypeptide)
	Species :	Rabbit
	Product Code :	GluRd2C-Rb-Af500
	RRID :	AB_2571600

Formulation : Liquid ; 200 μ g/ml in PBS with 0.05% NaN₃.

ご注意 : 本商品には 0.1 % 未満のアジ化ナトリウムが入っています。 誤って目や口に入ったり、皮膚に付着した場合は大量の水で洗い流してください。

Storage : Store at cool temp. (2-10°C)

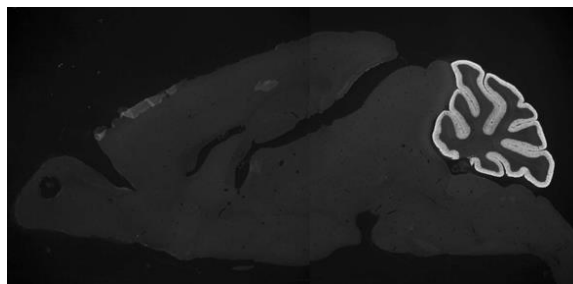
The antibody can be stored at 2-10°C. The antibody can be also aliquoted and stored at -80°C for long-term storage. Avoid repeated freeze-thawing.

Non-hazardous. No MSDS required.

Species : rabbit, polyclonal

Antigen : mouse GluD2 (D13266)

C-terminal 852-931 aa or 897-934 aa,
intracellular epitope



Specificity : mouse (others not tested)

The specificity has been verified by knockout mouse brains. In particular, GluR δ 2C (897-934 aa) antibody has no cross reactivity to GluD1 (see a reference of Konno et al., 2014).

Applications : In general, affinity-purified antibody is used at around 1 microgram/ml for immunoblot and immunohistochemistry. The most appropriate concentration should be determined by users, because it depends on contents in given cells, tissues and organs.

Research Use : For research use only, not for use in diagnostic procedures.

Remarks : For immunohistochemistry for neuronal iGluRs, users should adopt postembedding immunogold for electron microscopic detection and protease predigestion for light microscopic detection (see the below reference).

Reference : 1) Araki K, Meguro H, Kushiya E, Takayama C, Inoue Y, Mishina M. S (1993) Selective expression of the glutamate receptor channel delta 2 subunit in cerebellar Purkinje cells. *Biochem Biophys Res Commun.* 197:1267-1276.

2) Takayama, C., Nakagawa, S., Watanabe, M., Mishina, M. and Inoue, Y. (1995) Light- and electron-microscopic localization of the glutamate receptor channel δ 2 subunit in the mouse Purkinje cell. *Neurosci. Lett.* 188:89-92.

3) Takeuchi, T., Miyazaki, T., Watanabe, M., Mori, H., Sakimura, K., Mishina, M. (2005) Control of synaptic connection by glutamate receptor δ 2 in the mature cerebellum. *J. Neurosci.* 25:2146-2156.

4) Yamasaki M, Miyazaki T, Azechi H, Abe M, Natsume R, Hagiwara T, Aiba A, Mishina M, Sakimura K, Watanabe M: Glutamate receptor GluR δ 2 is essential for input pathway-dependent regulation of synaptic AMPAR contents in cerebellar Purkinje cells. *J. Neurosci.*, 31:3362-3374, 2011.

5) Konno K, Matsuda K, Nakamoto C, Uchigashima M, Miyazaki T, Yamasaki M, Sakimura K, Yuzaki M, Watanabe M: Enriched expression of GluD1 in higher brain regions and its involvement in parallel fiber-interneuron synapse formation in the cerebellum. *J. Neurosci.* 34:7412-7424, 2014.

ご注意 : 本商品には 0.1 % 未満のアジ化ナトリウムが入っています。 誤って目や口に入ったり、皮膚に付着した場合は大量の水で洗い流してください。