

Anti-GIRK2

(Kir3.2 ; G-protein-coupled inward rectifier potassium channel-2)

Product Information:

1)	Catalog #:	MSFR102040
	Item Name:	GIRK2 pAb (Rb) 20ug
	Size :	20µg (affinity-purified with antigen polypeptide)
	Species :	Rabbit
	Product Code :	GIRK2-Rb-Af290
	RRID :	AB_2571712
2)	Catalog #:	MSFR102050
	Item Name:	GIRK2 pAb (Rb) 50ug
	Size :	50µg (affinity-purified with antigen polypeptide)
	Species :	Rabbit
	Product Code :	GIRK2-Rb-Af290
	RRID :	AB_2571712
3)	Catalog #:	MSFR102060
	Item Name:	GIRK2 pAb (GP) 20ug
	Size :	20µg (affinity-purified with antigen polypeptide)
	Species :	Guinea pig
	Product Code :	GIRK2-GP-Af830
	RRID :	AB_2571713
4)	Catalog #:	MSFR102070
	Item Name:	GIRK2 pAb (GP) 50ug
	Size :	50µg (affinity-purified with antigen polypeptide)
	Species :	Guinea pig
	Product Code :	GIRK2-GP-Af830
	RRID :	AB_2571713

Formulation : Liquid ; 200 µg/ml in PBS with 0.05% NaN₃.

Storage : Store at cool temp. (2-10°C)

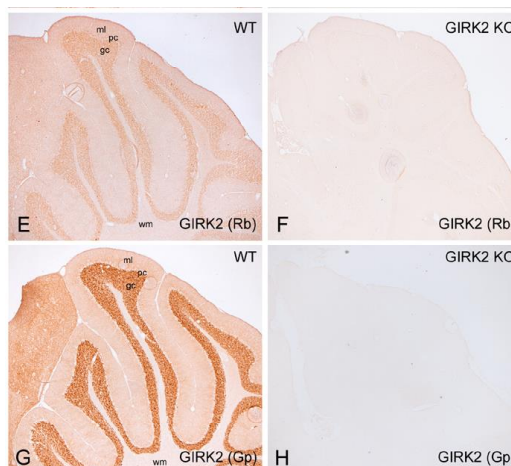
The antibody can be stored at 2-10°C. The antibody can be also aliquoted and stored at -80°C for long-term storage. Avoid repeated freeze-thawing. Non-hazardous. No MSDS required.

Species : rabbit / guinea pig, polyclonal

Antigen : mouse GIRK2A-1 C-terminal 32 aa
(390-421aa: KLNQHAELETEEEEEKNPEELT
ERNGDVANLEN; U51126)

Specificity : mouse (others not tested)

Immunoblot detects doublet at ~49 kDa, with the upper band showing stronger labeling. All immunohistochemical staining disappear in GIRK2-KO cerebellum.



ご注意 : 本商品には 0.1 % 未満のアジ化ナトリウムが入っています。 誤って目や口に入ったり、皮膚に付着した場合は大量の水で洗い流してください。

Applications : In general, affinity-purified antibody is used at around 1 microgram/ml for immunoblot and immunohistochemistry. The most appropriate concentration should be determined by users, because it depends on contents in given cells, tissues and organs.

Research Use : For research use only, not for use in diagnostic procedures.

Remarks : Guinea pig antibody is higher in titer than rabbit one.

Reference : 1) Aguado C, Colón J, Ciruela F, Schlaudraff F, Cabañero1 MJ, Perry C, Watanabe M, Liss B, Wickman K, Luján R. Cell type-specific subunit composition of G-protein-gated potassium channels in the cerebellum. J Neurochem. 105:497-511, 2008
2) The above pictures are provided from Dr. Rafael Lujan in Universidad de Castilla-La mancha, Spain

ご注意：本商品には 0.1 % 未満のアジ化ナトリウムが入っています。誤って目や口に入ったり、皮膚に付着した場合は大量の水で洗い流してください。

Distributor : NITTOBO MEDICAL CO., LTD
TEL : +81-(0)3-4582-5451
email : nmd-tokuhan@nittobogrp.com

Manufacture : FRONTIER INSTITUTE CO., LTD