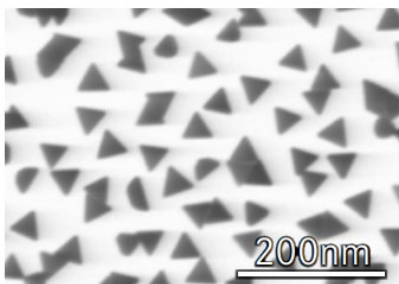


Gold Nanoplates

Catalog Number: Au-WPPLC1-C

Description

Gold nanoplates are water dispersions of plate-like, triangular gold nanoparticles with a sharp optical absorption waveform and exhibits a vivid blue color. The maximum absorption wavelength of Gold Nanoplates is determined by the particle size and aspect ratio (maximum length/thickness). Basically, as the aspect ratio increases, the maximum absorption wavelength shifts to the longer wavelength side.



Features

- 1) A water dispersion of disk-shaped Gold Nanoparticles.
- 2) Exhibits a vivid blue color due to absorption caused by localized surface plasmon resonance.
- 3) By applying this to diagnostic drugs, it is expected to enable highly sensitive detection and reduce the cost of antibodies.

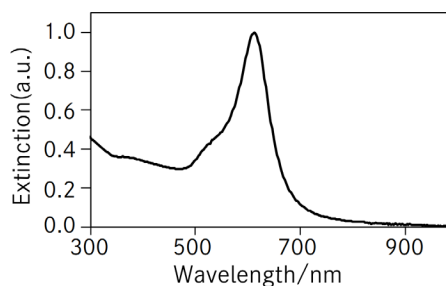
Storage Conditions

Gold nanoplates should be stored at 2~8°C.

Characteristics

Dispersion Medium: Water
Dispersion Materials: Trisodium citrate, etc.
Gold Content: 0.04~0.06 mg/g
Absorption properties: 615±15 nm
Particle size: Approximately 50 nm
pH: 4~7


*The above values are for reference only and are not standard values.



Product Safety and Handling

This product is for R&D use only, not for drug, household, or other uses. Please review the material safety datasheet (MSDS) for proper safety and handling procedures.

Ordering information



COSMO BIO USA

2792 Loker Ave West, Suite 101
Carlsbad, CA 92010, USA
email: info@cosmobiousa.com
Phone/FAX: (+1) 760-431-4600
URL: www.cosmobiousa.com

The information given in this document is to the best of our knowledge accurate, but no warranty is expressed or implied. It is the user's responsibility to determine the suitability for their own use of the products de herein, and since conditions of use are beyond our control, we disclaim all liability with respect to the use of any material supplied by us. Nothing contained herein shall be construed as a recommendation to use any product or to practice any process in violation of any law or any government regulation