



ANTIBODY

For research use only. Not for clinical diagnosis.

Catalog No.CSA-001

Anti-ITGB1 (Clone:SS88)

Product type	Recombinant Rabbit IgG-kappa (Clone:SS88)
Immunogen	Human_ITGB1 (P05556)
Form	Liquid
Concentration	300 μ g/mL
Volume	200 μ L
Buffer	Phosphate Buffered Saline (PBS)
Preservative	ProClin 300 (15 ppm)
Specificity	Human
Applications	WB(1:500-2000), IC(1:100-1000), IHC(p)(1:50-200) , IF(1:500-2000) , IP(10 μ g/mL)
Host	HEK293

Gene Alias FNRB, MDF2, MSK12

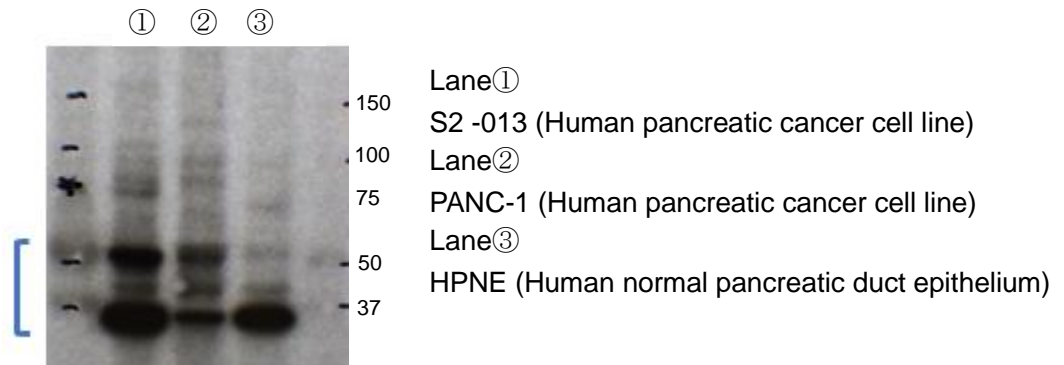
Application notes ITGB1, also known as integrin beta 1, is an integrin protein that is expressed on a variety of cell types, including endothelial cells, smooth muscle cells, and fibroblasts. Integrins are transmembrane proteins that mediate cell-to-cell and cell-to-matrix interactions.

- Cell adhesion: ITGB1 binds to extracellular matrix proteins, such as fibronectin and collagen, to help cells adhere to each other and to the extracellular matrix. This is essential for the formation and maintenance of tissues.
- Cell signaling: ITGB1 can also signal to cells, triggering a variety of cellular responses, such as cell migration, proliferation, and differentiation.
- Inflammation: ITGB1 is involved in inflammation, as it can bind to inflammatory molecules, such as chemokines and cytokines. This can promote the recruitment of immune cells to sites of inflammation.

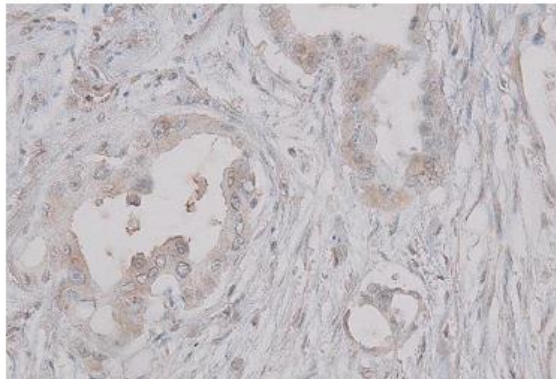
ITGB1 is a complex protein with a wide range of functions. It is involved in a number of important biological processes, including cell adhesion, cell signaling, and inflammation. ITGB1 is also involved in a number of diseases, and it is a potential target for therapeutic interventions.

Western blot

Antibody dilution: 1:2000 . Specific band of 35~60kDa.



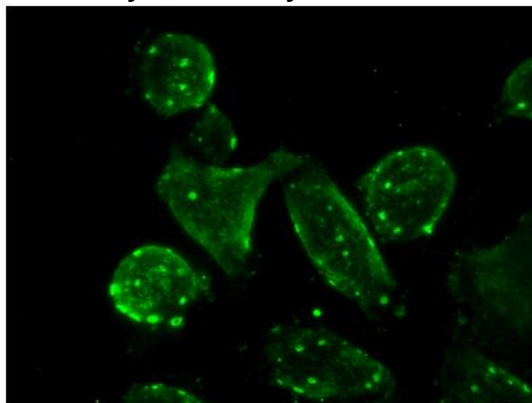
Immunohistochemistry(Paraffin sections)



Intense ITGB1 staining was observed in the cytoplasm and cell-membrane of both ductal adenocarcinoma cells and cancer-associated fibroblasts (CAFs), with stronger staining in the adenocarcinoma cells.

Antibody dilution: 1:200

Immunocytochemistry

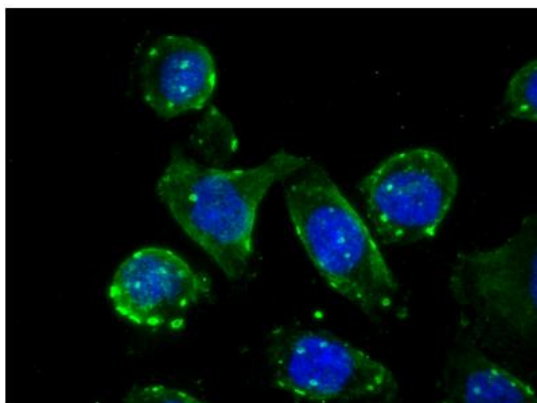


(Immunocytochemical staining of ITGB1 in S2-013 pancreatic cancer cells)

Intense ITGB1 staining was observed in the cytoplasm and cell-membrane of S2-013 cells, with a granular distribution of ITGB1. Green: ITGB1.

Antibody dilution: 1:1000

Immunocytochemistry



ITGB1 staining was observed in the cytoplasm and cell-membrane of S2-013 cells. ITGB1 (green)/DAPI (blue).

Storage

-80°C

For research use only, Not for diagnostic use.



COSMO BIO Co., LTD.

【JAPAN】
TOYO EKIMAE BLDG. 2-20, TOYO 2-CHOME,
KOTO-KU. TOKYO 135-0016, JAPAN
Phone: +81-3-5632-9610
FAX: +81-3-5632-9619
URL: <https://www.cosmobio.co.jp/>



COSMO BIO USA

【Outside Japan】
2792 Loker Ave West, Suite 101
Carlsbad, CA 92010, USA
email: info@cosmobioussa.com
Phone/FAX: (+1) 760-431-4600
URL: www.cosmobioussa.com