



POLYCLONAL ANTIBODY

For research use only, Not for diagnostic use.

Catalog No. COP-080061

Anti PGLYRP4
[Peptidoglycan recognition protein 4]

Product type	Primary antibody
Immunogen	Synthetic peptide : NH ₂ -C+WSVQGSHTPGYNDI-COOH
Host Species	Rabbit
Fusion Partner	-
Clone Designation	-
Isotype	-
Source	Serum
Purification	-
Form	Liquid
Formulation	Less than 0.1% NaN ₃ as a preservative.
Concentration	-
Volume	100 UL
Label	Unlabeled
Specificity	Porcine PGLYRP4
Cross reactivity	Reacts with porcine. Not yet tested in other species.
Storage	Store below -20°C (below -70°C for prolonged storage). Aliquot to avoid cycles of freeze/thaw.

Application notes	<ul style="list-style-type: none">• ELISA: 1/8,000
Recommended dilutions	<ul style="list-style-type: none">• Immunohistochemistry: 1/100-1/2,000• Western blotting• Immunoprecipitation• Flow cytometry <p>Other applications have not been tested. Optimal dilutions/concentrations should be determined by the end user.</p>
References	-

ANTIBODY CHARACTERIZATION

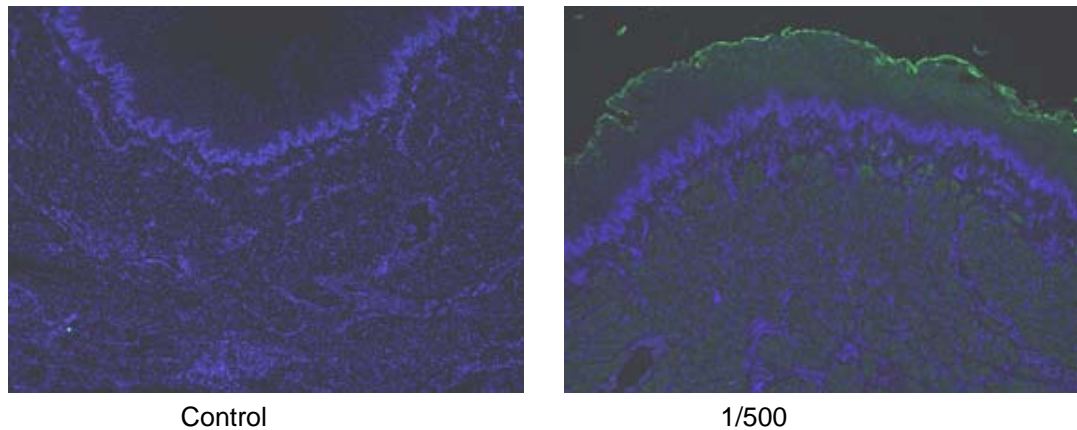


Fig.1 Immunohistochemical staining in the longitudinal section of porcine esophagus with anti-porcine PGLYRP4 antisera [Cat#COP-080061] (green).
Upper images, intestinal rumen side; lower images, lamina propria side. Nuclei in all columns were stained with DAPI (blue).

RELATED PRODUCT:

Product Name	Application	Quantity	Maker	Cat#
Anti porcine TLR2 Polyclonal Antibody	WB / IHC / FCM / IP / ELISA	50 UL	CAC	THU-A-TLR2
Anti porcine TLR9 Polyclonal Antibody	WB / IHC / FCM / IP / ELISA	50 UL	CAC	THU-A-TLR9
Anti porcine NOD1 Polyclonal Antibody	WB / IHC / FCM	50 UL	CAC	THU-A-NOD1
Anti porcine NOD2 Polyclonal Antibody	WB / IHC / FCM	50 UL	CAC	THU-A-NOD2
Anti porcine PGLYRP3 Polyclonal Antibody	WB / IHC / FCM / IP / ELISA	100 UL	COP	COP-080060
Anti porcine PGLYRP4 Polyclonal Antibody	WB / IHC / FCM / IP / ELISA	100 UL	COP	COP-080061

For research use only, Not for diagnostic use.



COSMO BIO Co., LTD.

Inspiration for Life Science

TOYO 2CHOME, KOTO-KU, TOKYO, 135-0016, JAPAN

URL: <http://www.cosmobio.co.jp>

e-mail: export@cosmobio.co.jp

[Outside Japan] Phone : +81-3-5632-9617

[国内連絡先] Phone : +81-3-5632-9610

FAX : +81-3-5632-9618

FAX : +81-3-5632-9619